

À des fins de recherche uniquement

# Anticorps Polyclonal de lapin anti-RAB8B



Numéro de catalogue: 55295-1-AP

## Informations de base

<b>Numéro de catalogue:</b> 55295-1-AP	<b>Numéro d'acquisition GenBank:</b> NM_016530	<b>Méthode de purification:</b> Purification par affinité contre l'antigène
<b>Taille:</b> 150ul , Concentration: 450 µg/ml by Nanodrop and 147 µg/ml by Bradford method using BSA as the standard;	<b>Identification du gène (NCBI):</b> 51762	<b>Dilutions recommandées:</b> WB 1:500-1:2000
<b>Hôte:</b> Lapin	<b>Nom complet:</b> RAB8B, member RAS oncogene family	
<b>Isotype:</b> IgG	<b>MW calculé:</b> 24 kDa	
	<b>MW observés:</b> 28 kDa	

## Applications

<b>Applications testées:</b> WB, ELISA	<b>Contrôles positifs:</b> WB : tissu cutané de souris, tissu cérébral humain, tissu de côlon de souris
<b>Spécificité de l'espèce:</b> Humain, rat, souris	

## Informations générales

The Rab8 GTPase is a member of the Ras superfamily that functions in protein transport and membrane restructuring. RAB8 has two isoforms, RAB8A and RAB8B, that share 40% amino acid identity in the C-terminal variable region. RAB8 activity is regulated by specific guanine nucleotide exchange factors (GEFs), that mediate GTP loading, and GTPase activating proteins (GAPs) that convert them into the inactive GDP-bound form. RAB8 participates in recycling of the  $\alpha$ -amino-3-hydroxy-5-methyl-4-isoxazolepropionic acid (AMPA) receptors to the dendritic spine surface as well as in the intracellular transport of the metabotropic glutamate receptor type 1 in neuronal cells. Rab8 is activated at the base of the cilium by its guanine nucleotide exchanger Rabin8. The antibody 11792-1-AP can detect both RAB8A and RAB8B. 55295-1-AP is specific to RAB8B and 55296-1-AP is specific to RAB8A.

## Stockage

**Stockage:**  
Stocker à -20 °C  
**Tampon de stockage:**  
PBS avec azoture de sodium à 0,02 % et glycérol à 50 % pH 7,3  
L'aliquotage n'est pas nécessaire pour le stockage à -20C

\*\*\* Les 20ul contiennent 0,1% de BSA.

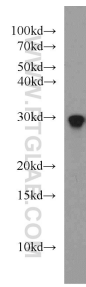
For technical support and original validation data for this product please contact:

T: 1 (888) 4PTGLAB (1-888-478-4522) (toll free in USA), or 1(312) 455-8498 (outside USA)

E: [proteintech@ptglab.com](mailto:proteintech@ptglab.com)  
W: [ptglab.com](http://ptglab.com)

This product is exclusively available under Proteintech Group brand and is not available to purchase from any other manufacturer.

## Données de validation sélectionnées



mouse skin tissue were subjected to SDS PAGE followed by western blot with 55295-1-AP (RAB8B antibody) at dilution of 1:1000 incubated at room temperature for 1.5 hours.