

À des fins de recherche uniquement

Anticorps Polyclonal de lapin anti-RAB8A



Numéro de catalogue: 55296-1-AP

Phare

20 Publications

Informations de base

Numéro de catalogue:

55296-1-AP

Taille:

150ul, Concentration: 650 µg/ml by Nanodrop;

Hôte:

Lapin

Isotype:

IgG

Numéro d'acquisition GenBank:

NM_005370

Identification du gène (NCBI):

4218

Nom complet:

RAB8A, member RAS oncogene family

MW calculé

24 kDa

MW observés:

24 kDa

Méthode de purification:

Purification par affinité contre l'antigène

Dilutions recommandées:

WB 1:500-1:2000

IP 0.5-4.0 ug for IP and 1:500-1:1000 for WB

IHC 1:50-1:500

Applications

Applications testées:

IHC, IP, WB, ELISA

Demandes citées:

IF, IHC, WB

Spécificité de l'espèce:

Humain, rat, souris

Espèces citées:

canin, Humain, rat, souris

Contrôles positifs:

WB : cellules A431, cellules HeLa, cellules HepG2, cellules NIH/3T3, tissu cérébral humain, tissu cutané de souris, tissu pulmonaire de souris

IP : cellules HeLa,

IHC : tissu de cancer du côlon humain,

Remarque-IHC: il est suggéré de démasquer l'antigène avec un tampon de TE buffer pH 9,0; (*) À défaut, le démasquage de l'antigène peut être effectué avec un tampon citrate pH 6,0.

Informations générales

The Rab8 GTPase is a member of the Ras superfamily that functions in protein transport and membrane restructuring. RAB8 has two isoforms, RAB8A and RAB8B, that share 40% amino acid identity in the C-terminal variable region. RAB8 activity is regulated by specific guanine nucleotide exchange factors (GEFs), that mediate GTP loading, and GTPase activating proteins (GAPs) that convert them into the inactive GDP-bound form. RAB8 participates in recycling of the α -amino-3-hydroxy-5-methyl-4-isoxazolepropionic acid (AMPA) receptors to the dendritic spine surface as well as in the intracellular transport of the metabotropic glutamate receptor type 1 in neuronal cells. Rab8 is activated at the base of the cilium by its guanine nucleotide exchanger Rabin8. The antibody 11792-1-AP can detect both RAB8A and RAB8B. 55295-1-AP is specific to RAB8B and 55296-1-AP is specific to RAB8A.

Publications notables

Autrice	Pubmed ID	Journal	Application
Khamal K Ampah	30254024	J Cell Sci	IF
Min Liu	34480124	Cell Res	WB, IF
Fangyan Yu	27767179	Sci Rep	IF

Stockage

Stockage:

Stocker à -20 °C

Tampon de stockage:

PBS avec azoture de sodium à 0,02 % et glycérol à 50 % pH 7,3

L'aliquotage n'est pas nécessaire pour le stockage à -20C

*** Les 20ul contiennent 0,1% de BSA.

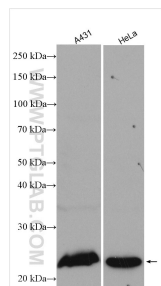
For technical support and original validation data for this product please contact:

T: 1 (888) 4PTGLAB (1-888-478-4522) (toll free in USA), or 1(312) 455-8498 (outside USA)

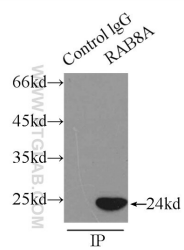
E: proteintech@ptglab.com
W: ptglab.com

This product is exclusively available under Proteintech Group brand and is not available to purchase from any other manufacturer.

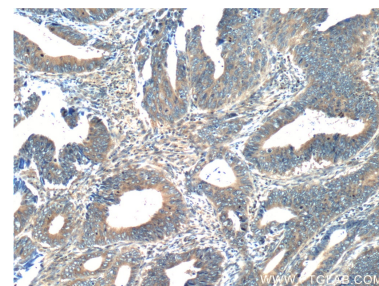
Données de validation sélectionnées



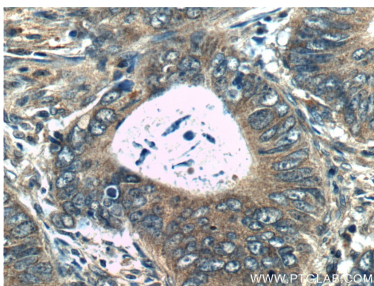
Various lysates were subjected to SDS PAGE followed by western blot with 55296-1-AP (RAB8A antibody) at dilution of 1:1000 incubated at room temperature for 1.5 hours.



IP Result of anti-RAB8A (IP:55296-1-AP, 3ug; Detection:55296-1-AP 1:500) with HeLa cells lysate 2500ug.



Immunohistochemical analysis of paraffin-embedded human colon cancer tissue slide using 55296-1-AP (RAB8A Antibody) at dilution of 1:200 (under 10x lens).



Immunohistochemical analysis of paraffin-embedded human colon cancer tissue slide using 55296-1-AP (RAB8A Antibody) at dilution of 1:200 (under 40x lens).