

À des fins de recherche uniquement

# Anticorps Polyclonal de lapin anti-FOXE3



Numéro de catalogue: 55301-1-AP

## Informations de base

Numéro de catalogue:  
55301-1-AP

Taille:  
150ul , Concentration: 1000 µg/ml by  
Nanodrop and 433 µg/ml by Bradford  
method using BSA as the standard;

Hôte:  
Lapin

Isotype:  
IgG

Numéro d'acquisition GenBank:  
NM\_012186

Identification du gène (NCBI):  
2301

Nom complet:  
forkhead box E3

MW calculé  
33 kDa

MW observés:  
30-35 kDa

Méthode de purification:  
Purification par affinité contre  
l'antigène

Dilutions recommandées:  
WB 1:500-1:1000

## Applications

Applications testées:  
WB, ELISA

Spécificité de l'espèce:  
Humain, souris

Contrôles positifs:

WB : cellules HepG2, cellules A375, cellules L02

## Informations générales

FOXE3, also named as FKHL12 and FREAC8, is a forkhead transcription factor expressed in the lens which is located at chromosome 1p32, have been associated with both recessive and dominant ocular disease. Defects in FOXE3 are a cause of anterior segment mesenchymal dysgenesis (ASMD). Defects in FOXE3 are a cause of congenital primary aphakia (CPA). This antibody is specific to FOXE3.

## Stockage

Stockage:

Stocker à -20 °C

Tampon de stockage:

PBS avec azoture de sodium à 0,02 % et glycérol à 50 % pH 7,3

L'aliquotage n'est pas nécessaire pour le stockage à -20C

\*\*\* Les 20ul contiennent 0,1% de BSA.

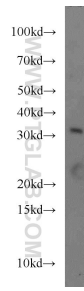
For technical support and original validation data for this product please contact:

T: 1 (888) 4PTGLAB (1-888-478-4522) (toll free  
in USA), or 1(312) 455-8498 (outside USA)

E: proteintech@ptglab.com  
W: ptglab.com

This product is exclusively available under Proteintech Group brand and is not available to purchase from any other manufacturer.

## Données de validation sélectionnées



HepG2 cells were subjected to SDS PAGE followed by western blot with 55301-1-AP (FOXE3 antibody) at dilution of 1:300 incubated at room temperature for 1.5 hours.