

À des fins de recherche uniquement

# Anticorps Polyclonal de lapin anti-TAL1



Numéro de catalogue: 55317-1-AP

1 Publications

## Informations de base

Numéro de catalogue:

55317-1-AP

Taille:

150ul, Concentration: 600 µg/ml by Nanodrop and 273 µg/ml by Bradford method using BSA as the standard;

Hôte:

Lapin

Isotype:

IgG

Numéro d'acquisition GenBank:

NM\_003189

Identification du gène (NCBI):

6886

Nom complet:

T-cell acute lymphocytic leukemia 1

MW calculé

34 kDa

MW observés:

40-44 kDa

Méthode de purification:

Purification par affinité contre l'antigène

Dilutions recommandées:

WB 1:500-1:2000

IP 0.5-4.0 ug for IP and 1:500-1:2000 for WB

## Applications

Applications testées:

IP, WB, ELISA

Demandes citées:

WB

Spécificité de l'espèce:

Humain, souris

Espèces citées:

Humain

Contrôles positifs:

WB : cellules Raji, cellules Jurkat

IP : cellules Raji,

## Informations générales

T-cell acute lymphocytic leukemia protein 1 (TAL1) also named Stem cell protein, T-cell leukemia/lymphoma protein 5. It is specifically expressed in leukemic stem cell, implicated in the genesis of hemopoietic malignancies. It may play an important role in hemopoietic differentiation, serving as a positive regulator of erythroid differentiation. The 38kd, 44kd bands recognized by antibody are the phosphorylated forms of TAL1 and its isoforms.

## Publications notables

Autrice	Pubmed ID	Journal	Application
Xin Yang	36297316	Pharmaceuticals (Basel)	WB

## Stockage

Stockage:

Stocker à -20 °C.

Tampon de stockage:

PBS avec azoture de sodium à 0,02 % et glycérol à 50 % pH 7,3

L'aliquotage n'est pas nécessaire pour le stockage à -20C

\*\*\* Les 20ul contiennent 0,1% de BSA.

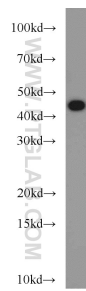
For technical support and original validation data for this product please contact:

T: 1 (888) 4PTGLAB (1-888-478-4522) (toll free in USA), or 1(312) 455-8498 (outside USA)

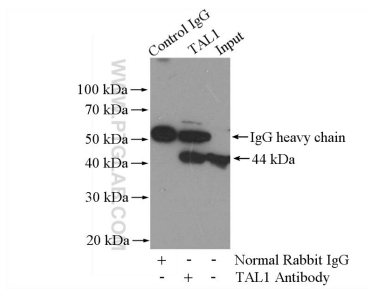
E: [proteintech@ptglab.com](mailto:proteintech@ptglab.com)  
W: [ptglab.com](http://ptglab.com)

This product is exclusively available under Proteintech Group brand and is not available to purchase from any other manufacturer.

## Données de validation sélectionnées



Raji cells were subjected to SDS PAGE followed by western blot with 55317-1-AP (TAL1 antibody) at dilution of 1:1000 incubated at room temperature for 1.5 hours.



IP Result of anti-TAL1 (IP:55317-1-AP, 4ug; Detection:55317-1-AP 1:1000) with Raji cells lysate 2000ug.