

À des fins de recherche uniquement

Anticorps Polyclonal de lapin anti-STK38



Numéro de catalogue: 55335-1-AP

3 Publications

Informations de base

Numéro de catalogue: 55335-1-AP	Numéro d'acquisition GenBank: NM_007271	Méthode de purification: Purification par affinité contre l'antigène
Taille: 150ul , Concentration: 1000 µg/ml by Nanodrop and 707 µg/ml by Bradford method using BSA as the standard;	Identification du gène (NCBI): 11329	Dilutions recommandées: WB 1:500-1:2000 IHC 1:100-1:400 IF 1:20-1:200
Hôte: Lapin	Nom complet: serine/threonine kinase 38	
Isotype: IgG	MW calculé: 54 kDa	
	MW observés: 54 kDa	

Applications

Applications testées: IF, IHC, WB, ELISA	Contrôles positifs: WB : cellules MCF-7, cellules HeLa
Demandes citées: IF, IHC, IP, WB	IHC : tissu rénal humain, tissu de cancer du sein humain
Spécificité de l'espèce: Humain, souris	IF : cellules HEK-293,
Espèces citées: Humain	

Remarque-IHC: il est suggéré de démasquer l'antigène avec un tampon de TE buffer pH 9,0; (*) À défaut, 'le démasquage de l'antigène peut être 'effectué avec un tampon citrate pH 6,0.

Informations générales

Serine/threonine-protein kinase 38 belongs to AGC Ser/Thr protein kinase family. STK38 implicates in cell proliferation and/or tumor progression, and might play a role in the HIV-1 life cycle. Researches showed that STK38 with STK38L, were proapoptotic kinases and key members of the RASSF1/STK4 signaling cascade and its kinase activity increased in early mitotic phase and was dependent on FRY and STK3. This antibody recognizes the C-terminal of STK38.

Publications notables

Autrice	Pubmed ID	Journal	Application
Xuejuan Gao	36511424	J Proteome Res	WB, IF
Kuangen Zhang	33852174	J Cell Biochem	IF, WB, IHC
Atri Ta	37041208	Nat Commun	WB, IP

Stockage

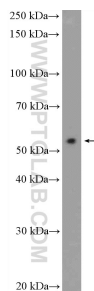
Stockage:
Stocker à -20 °C
Tampon de stockage:
PBS avec azoture de sodium à 0,02 % et glycérol à 50 % pH 7,3
L'aliquotage n'est pas nécessaire pour le stockage à -20C

*** Les 20ul contiennent 0,1% de BSA.

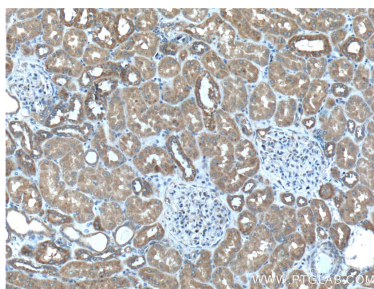
For technical support and original validation data for this product please contact:
T: 1 (888) 4PTGLAB (1-888-478-4522) (toll free in USA), or 1(312) 455-8498 (outside USA)
E: proteintech@ptglab.com
W: ptglab.com

This product is exclusively available under Proteintech Group brand and is not available to purchase from any other manufacturer.

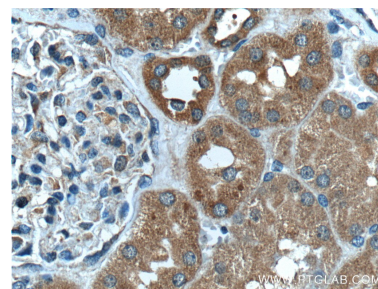
Données de validation sélectionnées



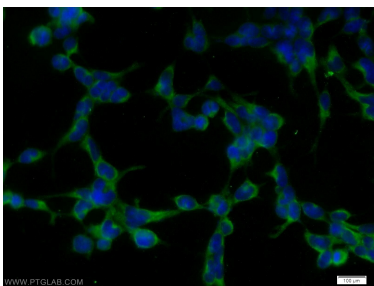
MCF-7 cells were subjected to SDS PAGE followed by western blot with 55335-1-AP (STK38 Antibody) at dilution of 1:1000 incubated at room temperature for 1.5 hours.



Immunohistochemical analysis of paraffin-embedded human kidney tissue slide using 55335-1-AP (STK38 Antibody) at dilution of 1:200 (under 10x lens).



Immunohistochemical analysis of paraffin-embedded human kidney tissue slide using 55335-1-AP (STK38 Antibody) at dilution of 1:200 (under 40x lens).



Immunofluorescent analysis of HEK-293 cells using 55335-1-AP (STK38 antibody) at dilution of 1:50 and Alexa Fluor 488-conjugated AffiniPure Goat Anti-Rabbit IgG(H+L).