

À des fins de recherche uniquement

Anticorps Polyclonal de lapin anti-SIDT1



Numéro de catalogue: 55352-1-AP

1 Publications

Informations de base

Numéro de catalogue: 55352-1-AP	Numéro d'acquisition GenBank: NML_017699	Méthode de purification: Purification par affinité contre l'antigène
Taille: 150ul, Concentration: 1000 µg/ml by Nanodrop and 400 µg/ml by Bradford method using BSA as the standard;	Identification du gène (NCBI): 54847	Dilutions recommandées: WB 1:500-1:2000 IHC 1:50-1:500 IF 1:50-1:500
Hôte: Lapin	Nom complet: SID1 transmembrane family, member 1	
Isotype: IgG	MW calculé: 94 kDa	
	MW observés: 95-110 kDa	

Applications

Applications testées: IF, IHC, WB, ELISA	Contrôles positifs: WB : cellules BxPC-3, IHC : tissu de cancer du sein humain, IF : cellules HepG2,
Demandes citées: IHC, WB	
Spécificité de l'espèce: Humain, souris	
Espèces citées: Humain	

Remarque-IHC: il est suggéré de démasquer l'antigène avec un tampon de TE buffer pH 9,0; (*) À défaut, le démasquage de l'antigène peut être effectué avec un tampon citrate pH 6,0.

Informations générales

SIDT1, also known as a human orthologue of SID-1, belongs to the SID family which is a highly conserved group of transmembrane channel-like proteins. As a transmembrane channel for intercellular communication, SIDT1 was found to facilitate small interfering RNA (siRNA) or miRNA uptake and also involved in cholesterol transport in human systems. SIDT1 mRNA and protein were mainly detected in the stomach and large intestine (including the cecum, colon and rectum) but not in the small intestine (especially the duodenum). Notably, SIDT1 was mainly located in gastric surface mucous cells (pit cells) but barely expressed in the parietal or chief cells. The SIDT1 gene encodes an 827 amino acid protein with a calculated molecular mass of 94 kDa. (PMID: 31632087, PMID: 32801357, PMID: 22174421)

Publications notables

Autrice	Pubmed ID	Journal	Application
Ya Wang	31632087	Onco Targets Ther	WB, IHC

Stockage

Stockage:
Stocker à -20°C. Stable pendant un an après l'expédition.
Tampon de stockage:
PBS avec azoture de sodium à 0,02 % et glycérol à 50 % pH 7,3
L'aliquotage n'est pas nécessaire pour le stockage à -20C

*** Les 20ul contiennent 0,1% de BSA.

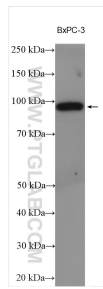
For technical support and original validation data for this product please contact:

T: 1 (888) 4PTGLAB (1-888-478-4522) (toll free in USA), or 1(312) 455-8498 (outside USA)

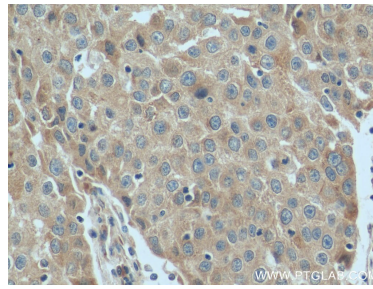
E: proteintech@ptglab.com
W: ptglab.com

This product is exclusively available under Proteintech Group brand and is not available to purchase from any other manufacturer.

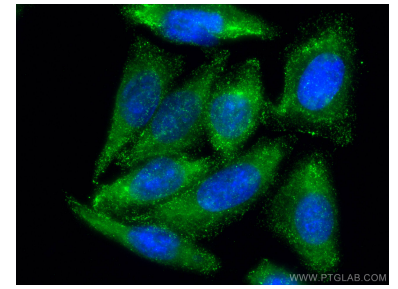
Données de validation sélectionnées



BxPC-3 cells were subjected to SDS PAGE followed by western blot with 55352-1-AP (SIDT1 antibody) at dilution of 1:1000 incubated at room temperature for 1.5 hours.



Immunohistochemical analysis of paraffin-embedded human breast cancer tissue slide using 55352-1-AP (SIDT1 antibody) at dilution of 1:200 (under 40x Lens). Heat mediated antigen retrieval with Tris-EDTA buffer (pH 9.0).



Immunofluorescent analysis of (-20°C Methanol) fixed HepG2 cells using SIDT1 antibody (55352-1-AP) at dilution of 1:200 and CoraLite®488-Conjugated AffiniPure Goat Anti-Rabbit IgG(H+L).