

À des fins de recherche uniquement

# Anticorps Polyclonal de lapin anti-FOXC1



Numéro de catalogue: 55365-1-AP

Phare

3 Publications

## Informations de base

Numéro de catalogue:  
55365-1-AP

Taille:  
150ul, Concentration: 1000 µg/ml by  
Nanodrop and 740 µg/ml by Bradford  
method using BSA as the standard;

Hôte:  
Lapin

Isotype:  
IgG

Numéro d'acquisition GenBank:  
NM\_001453

Identification du gène (NCBI):

Nom complet:  
forkhead box C1

MW calculé  
57 kDa

MW observés:  
70 kDa

Méthode de purification:  
Purification par affinité contre  
l'antigène

Dilutions recommandées:  
WB 1:200-1:1000  
IP 0.5-4.0 ug for IP and 1:200-1:1000  
for WB

## Applications

Applications testées:  
IP, WB, ELISA

Demandes citées:  
WB

Spécificité de l'espèce:  
Humain, souris

Espèces citées:  
Humain

Contrôles positifs:

WB : cellules MCF-7, cellules HEK-293, cellules HepG2

IP : cellules HepG2,

## Informations générales

FOXC1, also named as FKHL7 and FREAC3, binding of FREAC-3 and FREAC-4 to their cognate sites results in bending of the DNA at an angle of 80-90 degrees. Defects in FOXC1 are the cause of Axenfeld-Rieger syndrome type 3 (RIEG3). Defects in FOXC1 are the cause of iridogoniodysgenesis anomaly (IGDA). Defects in FOXC1 are a cause of Peters anomaly. This antibody is specific to FOXC1. Phosphorylation modification of FoXC1 protein may be responsible for the larger molecular weight of detection compared with theoretical molecular weight (PMID:27708239;16403239).

## Publications notables

Autrice	Pubmed ID	Journal	Application
Qinchen Cao	30431099	Mol. Med Rep	WB
Yu-Zhong Xu	28635400	Tumour Biol	WB
Ya Wang	34461284	Bone	WB

## Stockage

Stockage:

Stocker à -20 °C.

Tampon de stockage:

PBS avec azoture de sodium à 0,02 % et glycérol à 50 % pH 7,3

L'aliquotage n'est pas nécessaire pour le stockage à -20C

\*\*\* Les 20ul contiennent 0,1% de BSA.

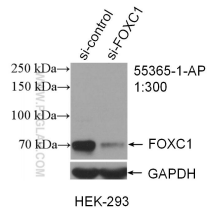
For technical support and original validation data for this product please contact:

T: 1 (888) 4PTGLAB (1-888-478-4522) (toll free  
in USA), or 1(312) 455-8498 (outside USA)

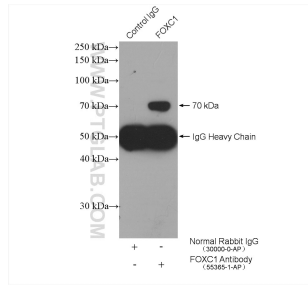
E: proteintech@ptglab.com  
W: ptglab.com

This product is exclusively available under Proteintech Group brand and is not available to purchase from any other manufacturer.

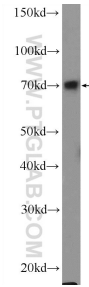
## Données de validation sélectionnées



WB result of FOXC1 antibody (55365-1-AP; 1:300; incubated at room temperature for 1.5 hours) with sh-Control and sh-FOXC1 transfected HEK-293 cells.



IP result of anti-FOXC1 (IP:55365-1-AP, 4ug; Detection:55365-1-AP 1:300) with HepG2 cells lysate 4000 ug.



MCF-7 cells were subjected to SDS PAGE followed by western blot with 55365-1-AP (FOXC1 Antibody) at dilution of 1:300 incubated at room temperature for 1.5 hours.