

À des fins de recherche uniquement

# Anticorps Polyclonal de lapin anti-SETD2



Numéro de catalogue: 55377-1-AP

Phare

4 Publications

## Informations de base

Numéro de catalogue:

55377-1-AP

Taille:

150ul, Concentration: 700 µg/ml by Nanodrop;

Hôte:

Lapin

Isotype:

IgG

Numéro d'acquisition GenBank:

NM\_014159

Identification du gène (NCBI):

29072

Nom complet:

SET domain containing 2

MW calculé

288 kDa

MW observés:

287 kDa

Méthode de purification:

Purification par affinité contre l'antigène

Dilutions recommandées:

WB 1:500-1:1000

IHC 1:50-1:500

IF 1:20-1:200

## Applications

Applications testées:

IF, IHC, WB, ELISA

Demandes citées:

ColP, WB

Spécificité de l'espèce:

Humain

Espèces citées:

Humain

Contrôles positifs:

WB : cellules Jurkat, cellules K-562, cellules U2OS

IHC : tissu de cancer du côlon humain, tissu de cancer de l'œsophage humain

IF : cellules HepG2,

**Remarque-IHC: il est suggéré de démasquer l'antigène avec un tampon de TE buffer pH 9,0; (\*) À défaut, le démasquage de l'antigène peut être effectué avec un tampon citrate pH 6,0.**

## Informations générales

SETD2, also named as HIF1, HYPB, KIAA1732, KMT3A, SET2, p231HBP, hSET2 and HIP-1, belongs to the histone-lysine methyltransferase family and SET2 subfamily. It is a histone methyltransferase that methylates 'Lys-36' of histone H3. SETD2 probably plays a role in chromatin structure modulation during elongation via its interaction with hyperphosphorylated POLR2A. It binds DNA at promoters. SETD2 may also act as a transcription activator that binds to promoters.(PMID:16118227) It is a potential tumour suppressor gene in breast cancer.(PMID:20944102) This antibody is specific to SETD2.

## Publications notables

Autrice	Pubmed ID	Journal	Application
Ruiqiong Liu	29846670	Nucleic Acids Res	WB
Jie Gao	30052810	Carcinogenesis	
Wentao Liu	35081978	J Exp Clin Cancer Res	WB

## Stockage

Stockage:

Stocker à -20°C. Stable pendant un an après l'expédition.

Tampon de stockage:

PBS avec azoture de sodium à 0,02 % et glycérol à 50 % pH 7,3

L'aliquotage n'est pas nécessaire pour le stockage à -20C

\*\*\* Les 20ul contiennent 0,1% de BSA.

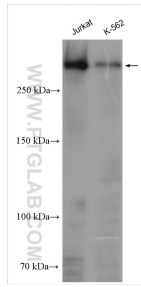
For technical support and original validation data for this product please contact:

T: 1 (888) 4PTGLAB (1-888-478-4522) (toll free in USA), or 1(312) 455-8498 (outside USA)

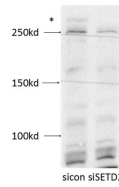
E: proteintech@ptglab.com  
W: ptglab.com

This product is exclusively available under Proteintech Group brand and is not available to purchase from any other manufacturer.

## Données de validation sélectionnées

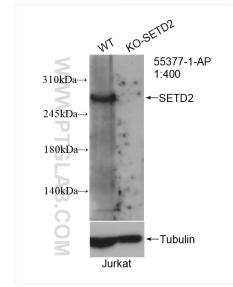


Various lysates were subjected to SDS PAGE followed by western blot with 55377-1-AP (SETD2 antibody) at dilution of 1:500 incubated at room temperature for 1.5 hours.

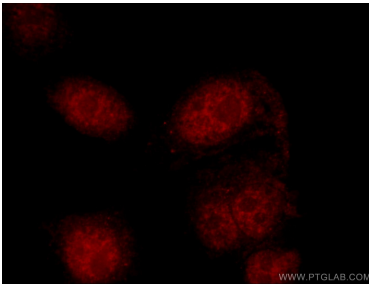


Negative control or SETD2 specific siRNAs were transfected into U2-OS cells with the final concentration of 20 nM. Forty eight hours after transfection, cells were lysed with RIPA buffer and subjected to SDS PAGE. The antibody dilution used for western blot was 1:500.

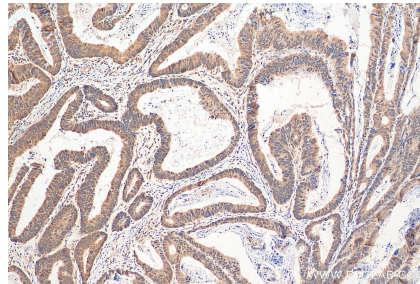
WB result of SETD2 antibody (55377-1-AP, 1:500) with siRNA transfected U2-OS cells.



WB result of SETD2 antibody (55377-1-AP; 1:400; room temperature for 1.5 hours) with wild-type and SETD2 knockout Jurkat cells.



Immunofluorescent analysis of HepG2 cells using 55377-1-AP (SETD2 antibody) at dilution of 1:50 and Rhodamine-Goat anti-Rabbit IgG.



Immunohistochemical analysis of paraffin-embedded human colon cancer tissue slide using 55377-1-AP (SETD2 antibody) at dilution of 1:200 (under 10x lens). Heat mediated antigen retrieval with Tris-EDTA buffer (pH 9.0).