

À des fins de recherche uniquement

Anticorps Polyclonal de lapin anti-HLA-F



Numéro de catalogue: 55379-1-AP

Informations de base

Numéro de catalogue: 55379-1-AP	Numéro d'acquisition GenBank: NM_018950	Méthode de purification: Purification par affinité contre l'antigène
Taille: 150ul, Concentration: 1000 µg/ml by Nanodrop and 573 µg/ml by Bradford method using BSA as the standard;	Identification du gène (NCBI): 3134	Dilutions recommandées: WB 1:500-1:2000
Hôte: Lapin	Nom complet: major histocompatibility complex, class I, F	
Isotype: IgG	MW calculé: 50 kDa	
	MW observés: 50 kDa, 66-70 kDa	

Applications

Applications testées: WB, ELISA	Contrôles positifs: WB : cellules Raji, cellules A431, cellules Jurkat, tissu placentaire humain, tissu splénique de souris
Spécificité de l'espèce: Humain, souris	

Informations générales

Human major histocompatibility complex (MHC) antigens, also referred to as human leukocyte antigens (HLA), are encoded by genes located on the short arm of chromosome 6 (6p21.3). There are two classes of HLA antigens: class I and class II. This class I molecules are membrane glycoproteins composed of a heavy (alpha) chain which is encoded by a HLA class I gene, and β 2-microglobulin light (beta) chain. The most extensively characterized members of the HLA class I gene family are the genes encoding the major transplantation antigens, HLA-A, B and C. HLA-F is a non-classical MHC class I molecule. (PMID: 667938; 3375250; 2249951)

Stockage

Stockage:
Stocker à -20 °C
Tampon de stockage:
PBS avec azoture de sodium à 0,02 % et glycérol à 50 % pH 7,3
L'aliquotage n'est pas nécessaire pour le stockage à -20C

*** Les 20ul contiennent 0,1% de BSA.

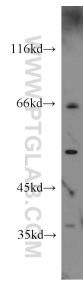
For technical support and original validation data for this product please contact:

T: 1 (888) 4PTGLAB (1-888-478-4522) (toll free in USA), or 1(312) 455-8498 (outside USA)

E: proteintech@ptglab.com
W: ptglab.com

This product is exclusively available under Proteintech Group brand and is not available to purchase from any other manufacturer.

Données de validation sélectionnées



Raji cells were subjected to SDS PAGE followed by western blot with 55379-1-AP (HLA-F antibody) at dilution of 1:1000 incubated at room temperature for 1.5 hours.