

À des fins de recherche uniquement

# Anticorps Polyclonal de lapin anti-DSPP



Numéro de catalogue: 55396-1-AP

1 Publications

## Informations de base

Numéro de catalogue:  
55396-1-AP

Taille:  
150ul , Concentration: 500 µg/ml by  
Nanodrop;

Hôte:  
Lapin

Isotype:  
IgG

Numéro d'acquisition GenBank:  
NM\_014208

Identification du gène (NCBI):  
1834

Nom complet:  
dentin sialophosphoprotein

MW calculé  
131 kDa

MW observés:  
90-100 kDa

Méthode de purification:  
Purification par affinité contre  
l'antigène

Dilutions recommandées:  
WB 1:1000-1:4000  
IF 1:200-1:800

## Applications

Applications testées:  
IF, WB, ELISA

Demandes citées:  
WB

Spécificité de l'espèce:  
Humain

Espèces citées:  
Humain

Contrôles positifs:

WB : cellules Caco-2, cellules LNCaP, cellules MCF-7

IF : cellules HeLa,

## Informations générales

DSPP (dentin sialophosphoprotein) is a precursor protein belongs to the small integrin-binding ligand N-linked glycoprotein (SIBLING) family. DSPP is secreted by odontoblasts and then is leaved into 3 fragments: N-terminal dentin sialoprotein (DSP), intermediate dentin glycoprotein (DGP) and C-terminal dentin phosphoprotein (DPP) (PMID:22201843). DSP is heavily glycosylated but DPP is not. DSP and DPP are principle proteins of the dentin extracellular matrix of the tooth, with DSP having a role in dentinogenesis and DPP binding calcium, facilitating initial mineralization of dentin matrix collagen and regulating the size and shape of the crystals. This antibody recognizes the cleavage product of DSPP with a molecular mass of around 90 to 100 kDa (PMID: 21103065).

## Publications notables

Autrice	Pubmed ID	Journal	Application
Jiange Zhao	36565046	Int Endod J	WB

## Stockage

Stockage:

Stocker à -20°C. Stable pendant un an après l'expédition.

Tampon de stockage:

PBS avec azoture de sodium à 0,02 % et glycérol à 50 % pH 7,3

L'aliquote n'est pas nécessaire pour le stockage à -20C

\*\*\* Les 20ul contiennent 0,1% de BSA.

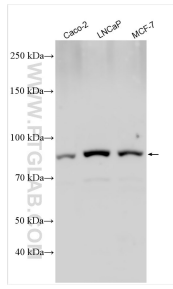
For technical support and original validation data for this product please contact:

T: 1 (888) 4PTGLAB (1-888-478-4522) (toll free  
in USA), or 1(312) 455-8498 (outside USA)

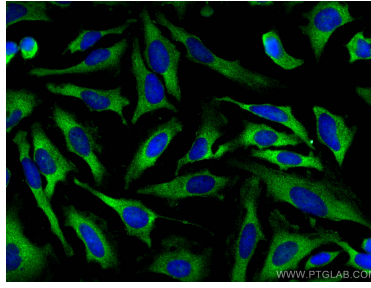
E: [proteintech@ptglab.com](mailto:proteintech@ptglab.com)  
W: [ptglab.com](http://ptglab.com)

This product is exclusively available under Proteintech Group brand and is not available to purchase from any other manufacturer.

## Données de validation sélectionnées



Various lysates were subjected to SDS PAGE followed by western blot with 55396-1-AP (DSSP antibody) at dilution of 1:2000 incubated at room temperature for 1.5 hours.



Immunofluorescent analysis of (-20°C Methanol) fixed HeLa cells using DSSP antibody (55396-1-AP) at dilution of 1:400 and CoraLite®488-Conjugated AffiniPure Goat Anti-Rabbit IgG(H+L).



Immunofluorescent analysis of (-20°C Methanol) fixed HeLa cells using DSSP antibody (55396-1-AP) at dilution of 1:400 and CoraLite®488-Conjugated AffiniPure Goat Anti-Rabbit IgG(H+L).