

À des fins de recherche uniquement

Anticorps Polyclonal de lapin anti-KIF15



Numéro de catalogue: 55407-1-AP

Phare

20 Publications

Informations de base

Numéro de catalogue:

55407-1-AP

Taille:

150ul, Concentration: 900 µg/ml by Nanodrop;

Hôte:

Lapin

Isotype:

IgG

Numéro d'acquisition GenBank:

NM_020242

Identification du gène (NCBI):

56992

Nom complet:

kinesin family member 15

MW calculé

160 kDa

MW observés:

150-165 kDa

Méthode de purification:

Purification par affinité contre l'antigène

Dilutions recommandées:

WB 1:2000-1:10000

IP 0.5-4.0 ug for IP and 1:500-1:1000 for WB

IHC 1:20-1:200

IF 1:20-1:200

Applications

Applications testées:

IF, IHC, IP, WB, ELISA

Demandes citées:

IF, IHC, WB

Spécificité de l'espèce:

Humain, souris

Espèces citées:

Humain, poisson-zèbre, rat, souris

Remarque-IHC: il est suggéré de démasquer l'antigène avec un tampon de TE buffer pH 9,0; (*) À défaut, le démasquage de l'antigène peut être effectué avec un tampon citrate pH 6,0.

Contrôles positifs:

WB : cellules Jurkat, cellules HEK-293, cellules MDA-MB-453s, tissu de thymus de souris

IP : tissu de thymus de souris,

IHC : tissu testiculaire humain,

IF : cellules HEK-293,

Informations générales

KIF15, also named as KLP2 and KNSL7, belongs to the kinesin-like protein family and KLP2 subfamily. It is a plus-end directed kinesin-like motor enzyme which involved in mitotic spindle assembly. Several isoforms of KIF15 exist due to the alternative splicing, with molecular weight between 130-160 kDa. Sometimes higher molecular weight around 200 kDa can also be observed, which may be a modified variant of KIF15. (14618103)

Publications notables

| Autrice | Pubmed ID | Journal | Application |
|------------|-----------|----------------------|-------------|
| Yanchao Ma | 33011740 | Cell Death Dis | IHC,WB,IF |
| Yuan Qiao | 30439711 | Cell Physiol Biochem | WB,IHC |
| Lin Gao | 34804913 | Front Oncol | WB,IHC |

Stockage

Stockage:

Stocker à -20°C. Stable pendant un an après l'expédition.

Tampon de stockage:

PBS avec azoture de sodium à 0,02 % et glycérol à 50 % pH 7,3

L'aliquotage n'est pas nécessaire pour le stockage à -20C

*** Les 20ul contiennent 0,1% de BSA.

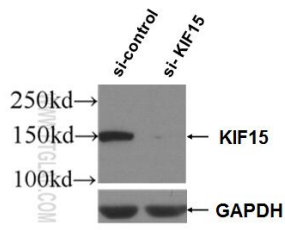
For technical support and original validation data for this product please contact:

T: 1 (888) 4PTGLAB (1-888-478-4522) (toll free in USA), or 1(312) 455-8498 (outside USA)

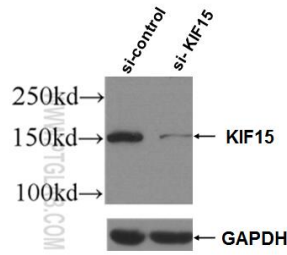
E: proteintech@ptglab.com
W: ptglab.com

This product is exclusively available under Proteintech Group brand and is not available to purchase from any other manufacturer.

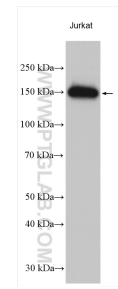
Données de validation sélectionnées



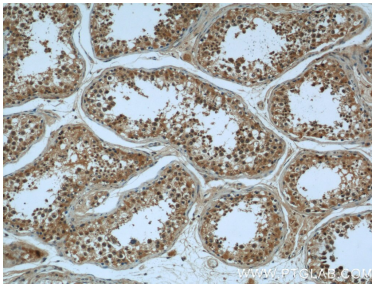
WB result of KIF15 antibody (55407-1-AP; 1:3000; incubated at room temperature for 1.5 hours) with sh-Control and sh-KIF15 transfected HEK-293 cells.



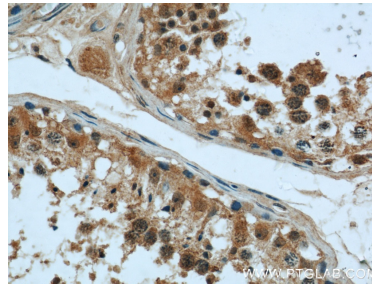
WB result of KIF15 antibody (55407-1-AP; 1:3000; incubated at room temperature for 1.5 hours) with sh-Control and sh-KIF15 transfected Jurkat cells.



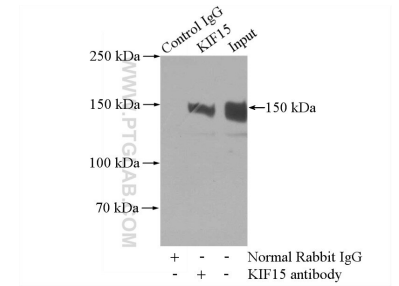
Jurkat cells were subjected to SDS PAGE followed by western blot with 55407-1-AP (KIF15 antibody) at dilution of 1:5000 incubated at room temperature for 1.5 hours.



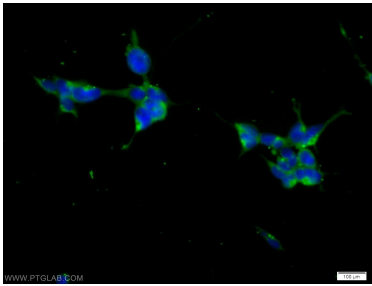
Immunohistochemical analysis of paraffin-embedded human testis using 55407-1-AP (KIF15 antibody) at dilution of 1:50 (under 10x lens).



Immunohistochemical analysis of paraffin-embedded human testis using 55407-1-AP (KIF15 antibody) at dilution of 1:50 (under 40x lens).



IP Result of anti-KIF15 (IP:55407-1-AP, 4ug; Detection:55407-1-AP 1:500) with mouse thymus tissue lysate 2800ug.



Immunofluorescent analysis of HEK-293 cells using 55407-1-AP (KIF15 antibody) at dilution of 1:50 and Alexa Fluor 488-conjugated AffiniPure Goat Anti-Rabbit IgG(H+L).