

À des fins de recherche uniquement

Anticorps Polyclonal de lapin anti-BCL11B



Numéro de catalogue: 55414-1-AP

1 Publications

Informations de base

Numéro de catalogue:

55414-1-AP

Taille:

150ul, Concentration: 850 µg/ml by Nanodrop;

Hôte:

Lapin

Isotype:

IgG

Numéro d'acquisition GenBank:

NM_022898

Identification du gène (NCBI):

64919

Nom complet:

B-cell CLL/lymphoma 11B (zinc finger protein)

MW calculé

96 kDa

MW observés:

116 kDa

Méthode de purification:

Purification par affinité contre l'antigène

Dilutions recommandées:

IP 0.5-4.0 ug for IP and 1:500-1:1000 for WB
IF 1:50-1:500

Applications

Applications testées:

IF, IP, ELISA

Demandes citées:

WB

Spécificité de l'espèce:

Humain, souris

Espèces citées:

Humain

Contrôles positifs:

IP : cellules Jurkat,

IF : cellules HepG2,

Informations générales

BCL11B, also named CTIP2, RIT1, CTIP-2, ZNF856B, and hRIT1-alpha, is a tumor-suppressor protein involved in T-cell lymphomas. It may function on the P53-signaling pathway. BCL11B is a key regulator of both differentiation and survival during thymocyte development. It depresses transcription through direct, TFCOUP2-independent binding to a GC-rich response element. This antibody is specific to BCL11B. The calculated molecular weight of BCL11B is 95 kDa but the modified BCL11B protein is about 116 kDa.

Publications notables

Autrice	Pubmed ID	Journal	Application
Juan Wang	31828511	Arch Virol	WB

Stockage

Stockage:

Stocker à -20°C. Stable pendant un an après l'expédition.

Tampon de stockage:

PBS avec azoture de sodium à 0,02 % et glycérol à 50 % pH 7,3

L'aliquotage n'est pas nécessaire pour le stockage à -20C

*** Les 20ul contiennent 0,1% de BSA.

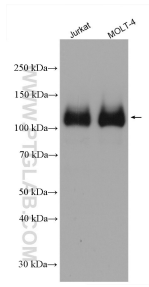
For technical support and original validation data for this product please contact:

T: 1 (888) 4PTGLAB (1-888-478-4522) (toll free in USA), or 1(312) 455-8498 (outside USA)

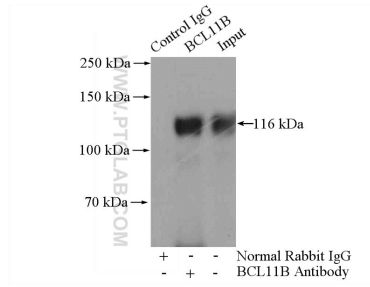
E: proteintech@ptglab.com
W: ptglab.com

This product is exclusively available under Proteintech Group brand and is not available to purchase from any other manufacturer.

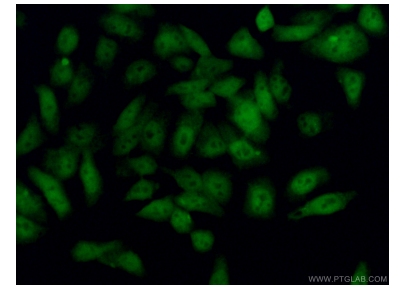
Données de validation sélectionnées



Various lysates were subjected to SDS PAGE followed by western blot with 55414-1-AP (BCL11B antibody) at dilution of 1:4000 incubated at room temperature for 1.5 hours.



IP Result of anti-BCL11B (IP:55414-1-AP, 4ug; Detection:55414-1-AP 1:500) with Jurkat cells lysate 2800ug.



Immunofluorescent analysis of (-20°C Ethanol) fixed HepG2 cells using 55414-1-AP (BCL11B antibody) at dilution of 1:50 and CoraLite488-Conjugated AffiniPure Goat Anti-Mouse IgG(H+L).