

À des fins de recherche uniquement

Anticorps Polyclonal de lapin anti-CASPR



Numéro de catalogue: 55417-1-AP

1 Publications

Informations de base

| | | |
|---|---|--|
| Numéro de catalogue: 55417-1-AP | Numéro d'acquisition GenBank: NM_003632 | Méthode de purification: Purification par affinité contre l'antigène |
| Taille: 150ul , Concentration: 1000 µg/ml by Nanodrop and 400 µg/ml by Bradford method using BSA as the standard; | Identification du gène (NCBI): 8506 | Dilutions recommandées: WB 1:500-1:2000 IHC 1:20-1:200 |
| Hôte: Lapin | Nom complet: contactin associated protein 1 | |
| Isotype: IgG | MW calculé: 156 kDa | |
| | MW observés: 180-190 kDa | |

Applications

Applications testées:
FC, IHC, WB, ELISA

Demandes citées:
IF

Spécificité de l'espèce:
Humain, rat, souris

Espèces citées:
souris

Remarque-IHC: il est suggéré de démasquer l'antigène avec un tampon de TE buffer pH 9,0; (*) À défaut, 'le démasquage de l'antigène peut être 'effectué avec un tampon citrate pH 6,0.

Contrôles positifs:

WB : tissu cérébral de souris,

IHC : tissu de cervelet humain,

Informations générales

CNTNAP1, also named as CASPR, NRXN4, p190, Neurexin IV and Neurexin-4, belongs to the neurexin family. It plays a role in the formation of functional distinct domains critical for saltatory conduction of nerve impulses in myelinated nerve fibers. CNTNAP1 seems to demarcate the paranodal region of the axo-glial junction. In association with contactin, CNTNAP1 may have a role in the signaling between axons and myelinating glial cells. This antibody is specific to CNTNAP1.

Publications notables

| Autrice | Pubmed ID | Journal | Application |
|------------|-----------|------------------|-------------|
| Yun-Yun Hu | 37409161 | Front Psychiatry | IF |

Stockage

Stockage:

Stocker à -20°C. Stable pendant un an après l'expédition.

Tampon de stockage:

PBS avec azoture de sodium à 0,02 % et glycérol à 50 % pH 7,3

L'aliquotage n'est pas nécessaire pour le stockage à -20C

*** Les 20ul contiennent 0,1% de BSA.

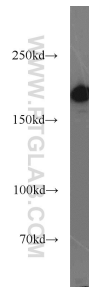
For technical support and original validation data for this product please contact:

T: 1 (888) 4PTGLAB (1-888-478-4522) (toll free in USA), or 1(312) 455-8498 (outside USA)

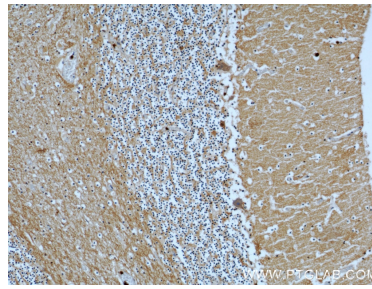
E: proteintech@ptglab.com
W: ptglab.com

This product is exclusively available under Proteintech Group brand and is not available to purchase from any other manufacturer.

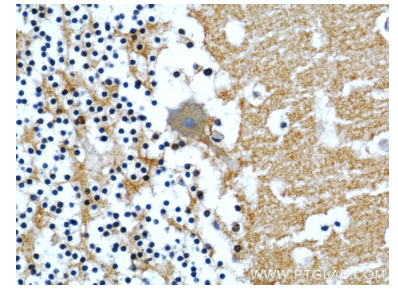
Données de validation sélectionnées



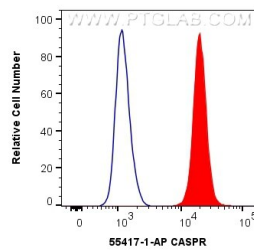
mouse brain tissue were subjected to SDS PAGE followed by western blot with 55417-1-AP (CASPR antibody) at dilution of 1:500 incubated at room temperature for 1.5 hours.



Immunohistochemical analysis of paraffin-embedded human cerebellum using 55417-1-AP (CASPR antibody) at dilution of 1:50 (under 10x lens).



Immunohistochemical analysis of paraffin-embedded human cerebellum using 55417-1-AP (CASPR antibody) at dilution of 1:50 (under 40x lens).



1X10⁶ SH-SY5Y cells were intracellularly stained with 0.4 ug Anti-Human CASPR (55417-1-AP) and CoraLite®488-Conjugated AffiniPure Goat Anti-Rabbit IgG(H+L) at dilution 1:1000 (red), or 0.4 ug Isotype Control. Cells were fixed with 4% PFA and permeabilized with Flow Cytometry Perm Buffer (PF00011-C).