

À des fins de recherche uniquement

# Anticorps Polyclonal de lapin anti-BMP6



Numéro de catalogue: 55421-1-AP

## Informations de base

Numéro de catalogue:

55421-1-AP

Taille:

150ul, Concentration: 800 µg/ml by Nanodrop;

Hôte:

Lapin

Isotype:

IgG

Numéro d'acquisition GenBank:

NM\_001718

Identification du gène (NCBI):

654

Nom complet:

bone morphogenetic protein 6

MW calculé

57 kDa

MW observés:

57 kDa

Méthode de purification:

Purification par affinité contre l'antigène

Dilutions recommandées:

WB 1:500-1:1000

## Applications

Applications testées:

WB, ELISA

Spécificité de l'espèce:

Humain, souris

Contrôles positifs:

WB : cellules A549, cellules HEK-293, cellules HL-60, cellules U2OS, tissu hépatique de souris

## Informations générales

Bone morphogenetic protein 6 (BMP6) is also named as VG-1-related protein (VG-1-R, VGR-1) and VGR, and belongs to the TGF-beta family. (PMID:33878365). Growth factor of the TGF-beta superfamily plays essential roles in many developmental processes including cartilage and bone formation (PMID:31019025). BMP6 participates in iron homeostasis, inhibits invasion by increasing adhesions and cell-cell type interactions and induces angiogenesis directly on vascular endothelial cells. BMP6 is coded by a tumor suppressor gene whose subexpression is related to the development and cancer progression; during neoplastic processes, methylation is the main mechanism by which gene silencing occurs (PMID:34706618). BMP6 plays an important role in the regulation of hepcidin/HAMP expression and iron metabolism by acting as a ligand for hemojuvelin/HJV (PMID:26582087). BMP6 initiates the canonical BMP signaling cascade by associating with type I receptor ACVR1 and type II receptor ACVR2B (PMID:18070108).

## Stockage

Stockage:

Stocker à -20°C. Stable pendant un an après l'expédition.

Tampon de stockage:

PBS avec azote de sodium à 0,02 % et glycérol à 50 % pH 7,3

L'aliquotage n'est pas nécessaire pour le stockage à -20C

\*\*\* Les 20ul contiennent 0,1% de BSA.

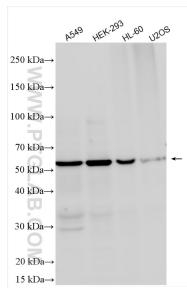
For technical support and original validation data for this product please contact:

T: 1 (888) 4PTGLAB (1-888-478-4522) (toll free in USA), or 1(312) 455-8498 (outside USA)

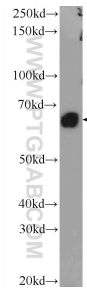
E: [proteintech@ptglab.com](mailto:proteintech@ptglab.com)  
W: [ptglab.com](http://ptglab.com)

This product is exclusively available under Proteintech Group brand and is not available to purchase from any other manufacturer.

## Données de validation sélectionnées



Various lysates were subjected to SDS PAGE followed by western blot with 55421-1-AP (BMP6 antibody) at dilution of 1:800 incubated at room temperature for 1.5 hours.



mouse liver tissue were subjected to SDS PAGE followed by western blot with 55421-1-AP (BMP6 Antibody) at dilution of 1:300 incubated at room temperature for 1.5 hours.