

À des fins de recherche uniquement

Anticorps Polyclonal de lapin anti-PYGL



Numéro de catalogue: 55429-1-AP

Informations de base

Numéro de catalogue:
55429-1-AP

Taille:
150ul, Concentration: 1000 µg/ml by
Nanodrop and 507 µg/ml by Bradford
method using BSA as the standard;

Hôte:
Lapin

Isotype:
IgG

Numéro d'acquisition GenBank:
NM_002863

Identification du gène (NCBI):
5836

Nom complet:
phosphorylase, glycogen, liver

MW calculé
97 kDa

MW observés:
97-105 kDa

Méthode de purification:
Purification par affinité contre
l'antigène

Dilutions recommandées:
WB 1:500-1:1000
IP 0.5-4.0 ug for IP and 1:500-1:1000
for WB
IF 1:20-1:200

Applications

Applications testées:
IF, IP, WB, ELISA

Spécificité de l'espèce:
Humain, souris

Contrôles positifs:

WB : cellules HepG2, cellules HeLa

IP : cellules HepG2,

IF : cellules HepG2,

Informations générales

PYGL belongs to the glycogen phosphorylase family. Phosphorylase is an important allosteric enzyme in carbohydrate metabolism. Enzymes from different sources differ in their regulatory mechanisms and in their natural substrates. However, all known phosphorylases share catalytic and structural properties. Defects in PYGL are the cause of glycogen storage disease type 6 (GSD6). This antibody is specific to PYGL. It has no cross reaction to PYGM and PYGB.

Stockage

Stockage:

Stocker à -20 °C.

Tampon de stockage:

PBS avec azoture de sodium à 0,02 % et glycérol à 50 % pH 7,3

L'aliquotage n'est pas nécessaire pour le stockage à -20C

*** Les 20ul contiennent 0,1% de BSA.

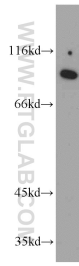
For technical support and original validation data for this product please contact:

T: 1 (888) 4PTGLAB (1-888-478-4522) (toll free
in USA), or 1(312) 455-8498 (outside USA)

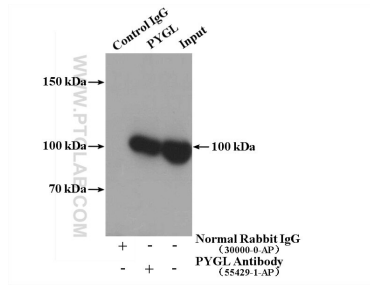
E: proteintech@ptglab.com
W: ptglab.com

This product is exclusively available under Proteintech Group brand and is not available to purchase from any other manufacturer.

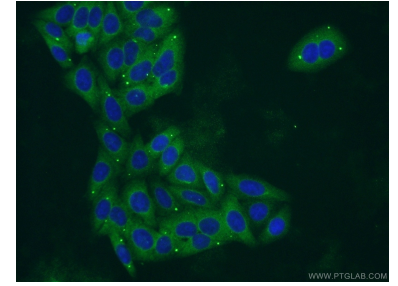
Données de validation sélectionnées



HepG2 cells were subjected to SDS PAGE followed by western blot with 55429-1-AP (PYGL antibody) at dilution of 1:500 incubated at room temperature for 1.5 hours.



IP Result of anti-PYGL (IP:55429-1-AP, 4ug; Detection:55429-1-AP 1:500) with HepG2 cells lysate 2400ug.



Immunofluorescent analysis of HepG2 cells using 55429-1-AP (PYGL antibody) at dilution of 1:50 and Alexa Fluor 488-conjugated AffiniPure Goat Anti-Rabbit IgG(H+L).