

À des fins de recherche uniquement

Anticorps Polyclonal de lapin anti-GATA6



Numéro de catalogue: 55435-1-AP

Phare

5 Publications

Informations de base

Numéro de catalogue:

55435-1-AP

Numéro d'acquisition GenBank:

NM_005257

Méthode de purification:

Purification par affinité contre l'antigène

Taille:

150ul, Concentration: 900 µg/ml by Nanodrop and 353 µg/ml by Bradford method using BSA as the standard;

Identification du gène (NCBI):

2627

Dilutions recommandées:

WB 1:500-1:2000

IHC 1:50-1:500

Nom complet:

GATA binding protein 6

Hôte:

Lapin

MW calculé

60 kDa

Isotype:

IgG

MW observés:

60-64 kDa

Applications

Applications testées:

FC, IHC, WB, ELISA

Contrôles positifs:

WB : cellules HeLa, cellules BxPC-3, cellules MCF-7

Demandes citées:

IF, WB

IHC : tissu de cancer du côlon humain, tissu hépatique de rat

Spécificité de l'espèce:

Humain

Espèces citées:

Humain, souris

Remarque-IHC: il est suggéré de démasquer l'antigène avec un tampon de TE buffer pH 9,0; (*) À défaut, le démasquage de l'antigène peut être effectué avec un tampon citrate pH 6,0.

Informations générales

GATA6 is thought to be important for regulating terminal differentiation and/or proliferation.

Publications notables

Autrice	Pubmed ID	Journal	Application
Zhihua Ren	35609006	Environ Sci Technol	WB
XiaoYun Sun	32714933	Front Cell Dev Biol	WB
Chan Xiang	25667220	FASEB J	WB

Stockage

Stockage:

Stocker à -20°C. Stable pendant un an après l'expédition.

Tampon de stockage:

PBS avec azoture de sodium à 0,02 % et glycérol à 50 % pH 7,3

L'aliquotage n'est pas nécessaire pour le stockage à -20C

*** Les 20ul contiennent 0,1% de BSA.

For technical support and original validation data for this product please contact:

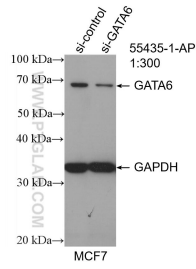
T: 1 (888) 4PTGLAB (1-888-478-4522) (toll free in USA), or 1(312) 455-8498 (outside USA)

E: proteintech@ptglab.com

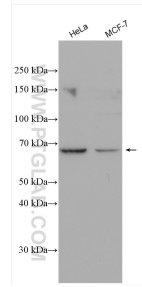
W: ptglab.com

This product is exclusively available under Proteintech Group brand and is not available to purchase from any other manufacturer.

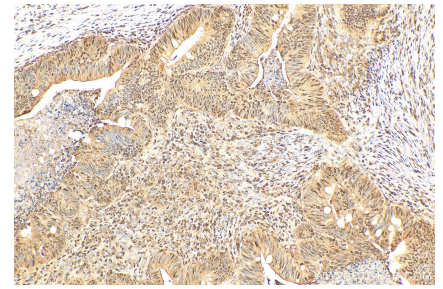
Données de validation sélectionnées



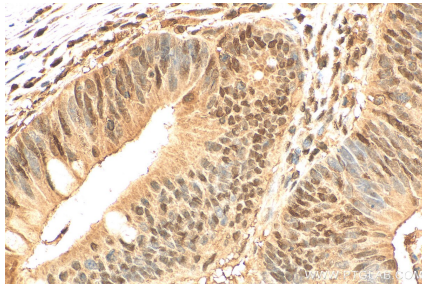
WB result of GATA6 antibody (55435-1-AP; 1:300; incubated at room temperature for 1.5 hours) with sh-Control and sh-GATA6 transfected MCF-7 cells.



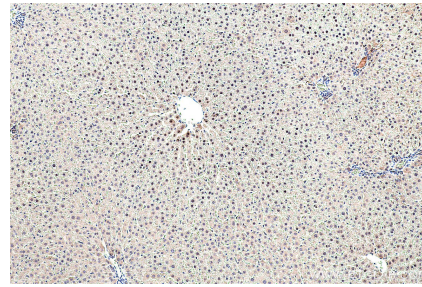
Various lysates were subjected to SDS PAGE followed by western blot with 55435-1-AP (GATA6 antibody) at dilution of 1:1000 incubated at room temperature for 1.5 hours.



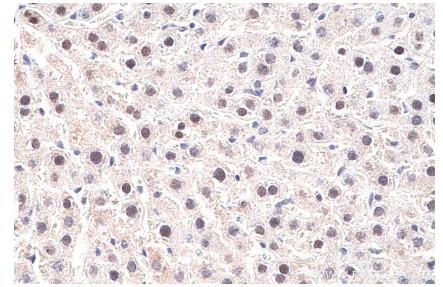
Immunohistochemical analysis of paraffin-embedded human colon cancer tissue slide using 55435-1-AP (GATA6 antibody) at dilution of 1:200 (under 10x lens). Heat mediated antigen retrieval with Tris-EDTA buffer (pH 9.0).



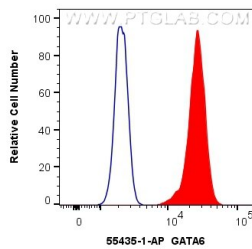
Immunohistochemical analysis of paraffin-embedded human colon cancer tissue slide using 55435-1-AP (GATA6 antibody) at dilution of 1:200 (under 40x lens). Heat mediated antigen retrieval with Tris-EDTA buffer (pH 9.0).



Immunohistochemical analysis of paraffin-embedded rat liver tissue slide using 55435-1-AP (GATA6 antibody) at dilution of 1:1000 (under 10x lens). Heat mediated antigen retrieval with Tris-EDTA buffer (pH 9.0).



Immunohistochemical analysis of paraffin-embedded rat liver tissue slide using 55435-1-AP (GATA6 antibody) at dilution of 1:1000 (under 40x lens). Heat mediated antigen retrieval with Tris-EDTA buffer (pH 9.0).



1×10^6 HuH-7 cells were intracellularly stained with 0.4 μ g Anti-Human GATA6 (55435-1-AP) and CoraLite[®]488-Conjugated AffiniPure Goat Anti-Rabbit IgG(H+L) at dilution 1:1000 (red), or 0.4 μ g Isotype Control. Cells were fixed and permeabilized with Transcription Factor Staining Buffer Kit (PF00011).