

À des fins de recherche uniquement

# Anticorps Polyclonal de lapin anti-UBE2E1



Numéro de catalogue: 55457-1-AP

Phare

## Informations de base

Numéro de catalogue:

55457-1-AP

Taille:

150ul, Concentration: 550 µg/ml by Nanodrop;

Hôte:

Lapin

Isotype:

IgG

Numéro d'acquisition GenBank:

NM\_003341

Identification du gène (NCBI):

7324

Nom complet:

ubiquitin-conjugating enzyme E2E 1 (UBC4/5 homolog, yeast)

MW calculé

21 kDa

MW observés:

21-27 kDa

Méthode de purification:

Purification par affinité contre l'antigène

Dilutions recommandées:

WB 1:500-1:2400

IHC 1:50-1:500

IF 1:50-1:500

## Applications

Applications testées:

IF, IHC, WB, ELISA

Spécificité de l'espèce:

Humain

**Remarque-IHC: il est suggéré de démasquer l'antigène avec un tampon de TE buffer pH 9,0; (\*) À défaut, 'le démasquage de l'antigène peut être effectué avec un tampon citrate pH 6,0.**

Contrôles positifs:

WB : cellules HEK-293,

IHC : tissu de cancer du sein humain,

IF : cellules MCF-7,

## Informations générales

UBE2E1 is a class III E2 ubiquitin conjugating enzyme that belongs to the UBE2E family of E2s, comprising UBE2E1/UBCH6, UBE2E2/UBCH8, and UBE2E3/UBCH9. UBE2E family members share a highly conserved UBC domain but are distinguished from one another by their unique N-terminal extensions. UBE2E1 contains a 50-residue unstructured N-terminal extension rich in serine and lysine residues, which has been shown to interact with USP7 and is essential for USP7-mediated UBE2E1 stabilization. In addition to its ubiquitin conjugating activity, UBE2E1 can also act as an ISG15 conjugating enzyme in vitro, although this activity has not been shown to occur in vivo. UBE2E1 can be covalently modified with either ISG15 or ubiquitin, both of which interfere with the ubiquitin conjugating activity of UBE2E1. UBE2E1 has also been reported to monoubiquitinate histone H2A at K119 in concert with the PRC1 E3 ligase complex. Full-length UBE2E1 is reported to be a dimer, with dimerization mediated by interaction of residues 21-27 from one molecule with the core domain of another molecule, as well as by contacts between a1 of the two interacting molecules. (PMID: 28073915, PMID: 30282802, PMID: 23871895)

## Stockage

Stockage:

Stocker à -20 °C.

Tampon de stockage:

PBS avec azoture de sodium à 0,02 % et glycérol à 50 % pH 7,3

L'aliquotage n'est pas nécessaire pour le stockage à -20C

\*\*\* Les 20ul contiennent 0,1% de BSA.

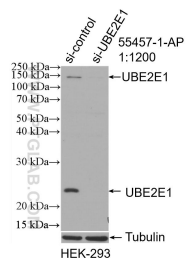
For technical support and original validation data for this product please contact:

T: 1 (888) 4PTGLAB (1-888-478-4522) (toll free in USA), or 1(312) 455-8498 (outside USA)

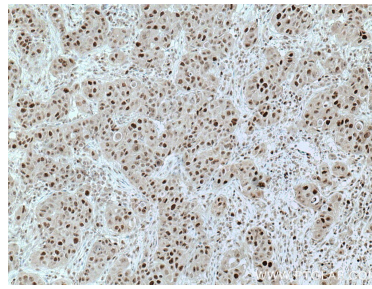
E: [proteintech@ptglab.com](mailto:proteintech@ptglab.com)  
W: [ptglab.com](http://ptglab.com)

This product is exclusively available under Proteintech Group brand and is not available to purchase from any other manufacturer.

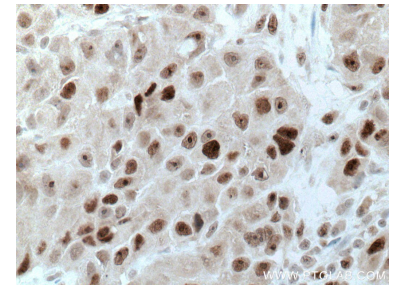
## Données de validation sélectionnées



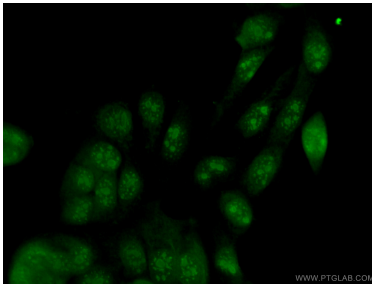
WB result of UBE2E1 antibody (55457-1-AP; 1:1200; incubated at room temperature for 1.5 hours) with sh-Control and sh-UBE2E1 transfected HEK-293 cells.



Immunohistochemical analysis of paraffin-embedded human breast cancer tissue slide using 55457-1-AP (UBE2E1 antibody) at dilution of 1:200 (under 10x lens. Heat mediated antigen retrieval with Tris-EDTA buffer (pH 9.0).



Immunohistochemical analysis of paraffin-embedded human breast cancer tissue slide using 55457-1-AP (UBE2E1 antibody) at dilution of 1:200 (under 40x lens. Heat mediated antigen retrieval with Tris-EDTA buffer (pH 9.0).



Immunofluorescent analysis of (4% PFA) fixed MCF-7 cells using 55457-1-AP (UBE2E1 antibody) at dilution of 1:50 and Alexa Fluor 488-Conjugated AffiniPure Goat Anti-Rabbit IgG(H+L).