

À des fins de recherche uniquement

# Anticorps Polyclonal de lapin anti-Myosin Light Chain 2/MLC-2V



Numéro de catalogue: 55462-1-AP

3 Publications

## Informations de base

Numéro de catalogue:  
55462-1-AP

Taille:  
150ul, Concentration: 1000 µg/ml by Nanodrop and 793 µg/ml by Bradford method using BSA as the standard;

Hôte:  
Lapin

Isotype:  
IgG

Numéro d'acquisition GenBank:  
NM\_000432

Identification du gène (NCBI):

Nom complet:  
myosin, light chain 2, regulatory, cardiac, slow

MW calculé:  
19 kDa

MW observés:  
18-20 kDa

Méthode de purification:  
Purification par affinité contre l'antigène

Dilutions recommandées:  
WB 1:2000-1:20000  
IP 0.5-4.0 ug for IP and 1:500-1:1000 for WB  
IHC 1:20-1:200

## Applications

Applications testées:  
FC, IHC, IP, WB, ELISA

Demandes citées:  
IF, WB

Spécificité de l'espèce:  
Humain, rat, souris

Espèces citées:  
Humain, souris

Contrôles positifs:

WB : tissu cardiaque de rat,

IP : tissu cérébral de souris,

IHC : tissu cardiaque humain, tissu de muscle squelettique humain

**Remarque-IHC: il est suggéré de démasquer l'antigène avec un tampon de TE buffer pH 9,0; (\*) À défaut, le démasquage de l'antigène peut être effectué avec un tampon citrate pH 6,0.**

## Informations générales

MYL2, also named as MLC-2v and MLC-2, is ventricular/cardiac muscle isoform. Defects in MYL2 are the cause of cardiomyopathy familial hypertrophic type 10 (CMH10). Defects in MYL2 are the cause of cardiomyopathy familial hypertrophic with mid-left ventricular chamber type 2 (MVC2). MYL2 has been widely used as a marker of mature ventricular cardiomyocytes.

## Publications notables

Autrice	Pubmed ID	Journal	Application
Chao Ci	30431060	Int J Mol Med	WB
Kiwon Ban	26651608	Stem Cell Reports	IF
Anteneh Getachew	34113824	iScience	WB

## Stockage

Stockage:

Stocker à -20°C. Stable pendant un an après l'expédition.

Tampon de stockage:

PBS avec azoture de sodium à 0,02 % et glycérol à 50 % pH 7,3

L'aliquotage n'est pas nécessaire pour le stockage à -20C

\*\*\* Les 20ul contiennent 0,1% de BSA.

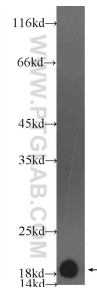
For technical support and original validation data for this product please contact:

T: 1 (888) 4PTGLAB (1-888-478-4522) (toll free in USA), or 1(312) 455-8498 (outside USA)

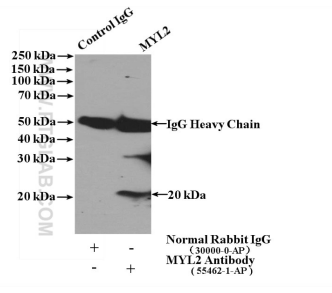
E: proteintech@ptglab.com  
W: ptglab.com

This product is exclusively available under Proteintech Group brand and is not available to purchase from any other manufacturer.

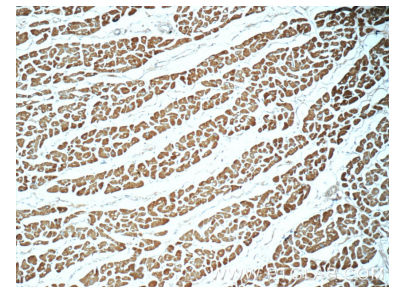
## Données de validation sélectionnées



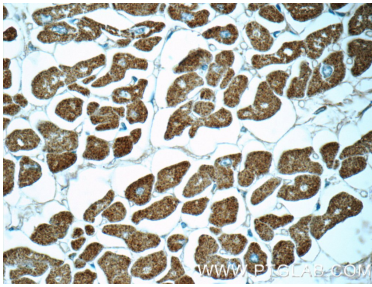
rat heart tissue were subjected to SDS PAGE followed by western blot with 55462-1-AP (MYL2 Antibody) at dilution of 1:5000 incubated at room temperature for 1.5 hours.



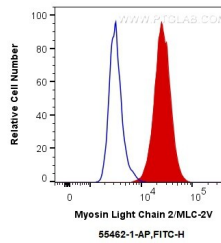
IP Result of anti-MYL2 (IP:55462-1-AP, 4ug; Detection:55462-1-AP 1:500) with mouse brain tissue lysate 4000ug.



Immunohistochemical analysis of paraffin-embedded human heart tissue slide using 55462-1-AP (MYL2 Antibody) at dilution of 1:50 (under 10x lens).



Immunohistochemical analysis of paraffin-embedded human heart tissue slide using 55462-1-AP (MYL2 Antibody) at dilution of 1:50 (under 40x lens).



1X10<sup>6</sup> C2C12 cells were intracellularly stained with 0.4 ug Anti-Human Myosin Light Chain 2/MLC-2V (55462-1-AP) and CoraLite®488-Conjugated AffiniPure Goat Anti-Rabbit IgG(H+L) at dilution 1:1000 (red), or 0.4 ug Control Antibody. Cells were fixed with 4% PFA and permeabilized with Flow Cytometry Perm Buffer (PF00011-C).