

À des fins de recherche uniquement

Anticorps Polyclonal de lapin anti-LRRC38



Numéro de catalogue: 55479-1-AP

Informations de base

Numéro de catalogue: 55479-1-AP	Numéro d'acquisition GenBank: XM_001713942	Méthode de purification: Purification par affinité contre l'antigène
Taille: 150ul , Concentration: 800 µg/ml by Nanodrop and 267 µg/ml by Bradford method using BSA as the standard;	Identification du gène (NCBI): 126755	Dilutions recommandées: WB 1:200-1:1000
Hôte: Lapin	Nom complet: leucine rich repeat containing 38	
Isotype: IgG	MW calculé 32 kDa	
	MW observés: 32 kDa	

Applications

Applications testées: WB, ELISA	Contrôles positifs: WB : cellules RAW 264.7,
Spécificité de l'espèce: Humain, souris	

Informations générales

The large-conductance, calcium- and voltage-activated potassium (BK) channels are characterized by their large conductance of potassium ions (K⁺) through cell membranes. BK channels are widely expressed with diverse functions in different tissues or cell types, consisting of the pore-forming, voltage- and, calcium-sensing alpha subunits, either alone or in association with regulatory subunits (PMID: 25360119; 22547800). LRRC38 belongs to the gamma family of BK channel accessory subunits that regulate channel gating properties.

Stockage

Stockage:
Stocker à -20 °C.
Tampon de stockage:
PBS avec azoture de sodium à 0,02 % et glycérol à 50 % pH 7,3
L'aliquotage n'est pas nécessaire pour le stockage à -20C

***** Les 20ul contiennent 0,1% de BSA.**

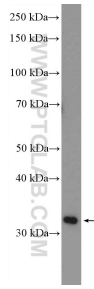
For technical support and original validation data for this product please contact:

T: 1 (888) 4PTGLAB (1-888-478-4522) (toll free in USA), or 1(312) 455-8498 (outside USA)

E: proteintech@ptglab.com
W: ptglab.com

This product is exclusively available under Proteintech Group brand and is not available to purchase from any other manufacturer.

Données de validation sélectionnées



RAW 264.7 cells were subjected to SDS PAGE followed by western blot with 55479-1-AP (LRRC38 Antibody) at dilution of 1:300 incubated at room temperature for 1.5 hours.