

À des fins de recherche uniquement

Anticorps Polyclonal de lapin anti-MAML1



Numéro de catalogue: 55493-1-AP

1 Publications

Informations de base

Numéro de catalogue:

55493-1-AP

Numéro d'acquisition GenBank:

NM_014757

Méthode de purification:

Purification par affinité contre l'antigène

Taille:

150ul, Concentration: 1000 µg/ml by Nanodrop and 380 µg/ml by Bradford method using BSA as the standard;

Identification du gène (NCBI):

9794

Dilutions recommandées:

WB 1:500-1:2000

Hôte:

Lapin

Nom complet:

mastermind-like 1 (Drosophila)

Isotype:

IgG

MW calculé

108 kDa

MW observés:

108-120 kDa

Applications

Applications testées:

WB, ELISA

Contrôles positifs:

WB : cellules HeLa, cellules Jurkat, tissu cardiaque de souris

Demandes citées:

ColP, WB

Spécificité de l'espèce:

Humain, rat, souris

Espèces citées:

Humain

Informations générales

MAML1, also named as KIAA0200 and Mam-1, belongs to the mastermind family. It acts as a transcriptional coactivator for NOTCH proteins. MAML1 has been shown to amplify NOTCH-induced transcription of HES1. It enhances phosphorylation and proteolytic turnover of the NOTCH intracellular domain in the nucleus through interaction with CDK8. MAML1 binds to CREBBP/CBP which promotes nucleosome acetylation at NOTCH enhancers and activates transcription. Induces phosphorylation and localization of CREBBP to nuclear foci. It plays a role in hematopoietic development by regulating NOTCH-mediated lymphoid cell fate decisions. This antibody is specific to MAML1. The calculated molecular weight of MAML1 is 108 kDa, but modified MAML1 is about 120 kDa.

Publications notables

Autrice	Pubmed ID	Journal	Application
Yanzhu Shi	35844785	Int J Biol Sci	WB, ColP

Stockage

Stockage:

Stocker à -20°C. Stable pendant un an après l'expédition.

Tampon de stockage:

PBS avec azoture de sodium à 0,02 % et glycérol à 50 % pH 7,3

L'aliquote n'est pas nécessaire pour le stockage à -20C

*** Les 20ul contiennent 0,1% de BSA.

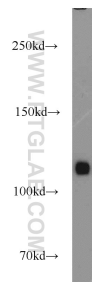
For technical support and original validation data for this product please contact:

T: 1 (888) 4PTGLAB (1-888-478-4522) (toll free in USA), or 1(312) 455-8498 (outside USA)

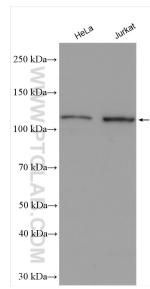
E: proteintech@ptglab.com
W: ptglab.com

This product is exclusively available under Proteintech Group brand and is not available to purchase from any other manufacturer.

Données de validation sélectionnées



mouse heart tissue were subjected to SDS PAGE followed by western blot with 55493-1-AP (MAML1 antibody) at dilution of 1:1000 incubated at room temperature for 1.5 hours.



Various lysates were subjected to SDS PAGE followed by western blot with 55493-1-AP (MAML1 antibody) at dilution of 1:1000 incubated at room temperature for 1.5 hours.