

À des fins de recherche uniquement

Anticorps Monoclonal anti-TGFBI / BIGH3



Numéro de catalogue: 60007-1-Ig

Phare

8 Publications

Informations de base

Numéro de catalogue: 60007-1-Ig	Numéro d'acquisition GenBank: BC000097	Méthode de purification: Précipitation de l'acide caprylique/du sulfate d'ammonium
Taille: 150ul , Concentration: 1772 µg/ml by Nanodrop and 1000 µg/ml by Bradford method using BSA as the standard;	Identification du gène (NCBI): 7045	CloneNo.: 3E11D11
Hôte: Mouse	Nom complet: transforming growth factor, beta-induced, 68kDa	Dilutions recommandées: WB 1:500-1:2000 IP 0.5-4.0 ug for IP and 1:200-1:1000 for WB
Isotype: IgG2a	MW calculé: 683 aa, 75 kDa	IHC 1:500-1:2000 IF 1:200-1:800
Immunogen Catalog Number: AG0241	MW observés: 68 kDa	

Applications

Applications testées:

IF, IHC, IP, WB, ELISA

Demandes citées:

IF, IHC, IP, WB

Spécificité de l'espèce:

Humain

Espèces citées:

Humain, souris

Remarque-IHC: il est suggéré de démasquer l'antigène avec un tampon de TE buffer pH 9,0; (*) A défaut, 'le démasquage de l'antigène peut être effectué avec un tampon citrate pH 6,0.

Contrôles positifs:

WB : tissu rénal humain,

IP : cellules HeLa,

IHC : tissu de côlon humain, tissu de cancer de la peau humain, tissu de cancer du côlon humain, tissu placentaire humain, tissu rénal humain

IF : tissu de cancer du côlon humain,

Informations générales

TGFBI, also named as BIGH3, Kerato-epithelin and RGD-CAP, binds to type I, II, and IV collagens. TGFBI is an adhesion protein which may play an important role in cell-collagen interactions. In cartilage, it may be involved in endochondral bone formation. TGFBI is an extracellular matrix adaptor protein, it has been reported to be differentially expressed in transformed tissues. TGFBI is a predictive factor of the response to chemotherapy, and suggest the use of TGFBI-derived peptides as possible therapeutic adjuvants for the enhancement of responses to chemotherapy. (PMID:20509890) Defects in TGFBI are the cause of epithelial basement membrane corneal dystrophy (EBMD). Defects in TGFBI are the cause of corneal dystrophy Groenouw type 1 (CDGG1). Defects in TGFBI are the cause of corneal dystrophy lattice type 1 (CDL1). Defects in TGFBI are a cause of corneal dystrophy Thiel-Behnke type (CDTB). Defects in TGFBI are the cause of Reis-Buecklers corneal dystrophy (CDRB). Defects in TGFBI are the cause of lattice corneal dystrophy type 3A (CDL3A). Defects in TGFBI are the cause of Avellino corneal dystrophy (ACD).

Publications notables

Autrice	Pubmed ID	Journal	Application
Laura S M Lecker	34561272	Cancer Res	WB,IHC
Tianhong Pan	29190493	Neoplasia	WB,IHC
Douglas S Annis	26273833	PLoS One	WB

Stockage

Stockage:

Stocker à -20°C. Stable pendant un an après l'expédition.

Tampon de stockage:

PBS avec azoture de sodium à 0,1 % et glycérol à 50 % pH 7,3

L'aliquotage n'est pas nécessaire pour le stockage à -20C

*** Les 20ul contiennent 0,1% de BSA.

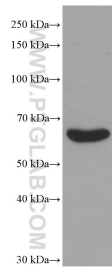
For technical support and original validation data for this product please contact:

T: 1 (888) 4PTGLAB (1-888-478-4522) (toll free in USA), or 1(312) 455-8498 (outside USA)

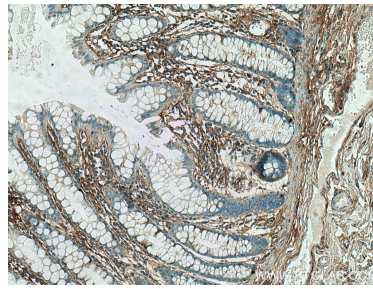
E: proteintech@ptglab.com
W: ptglab.com

This product is exclusively available under Proteintech Group brand and is not available to purchase from any other manufacturer.

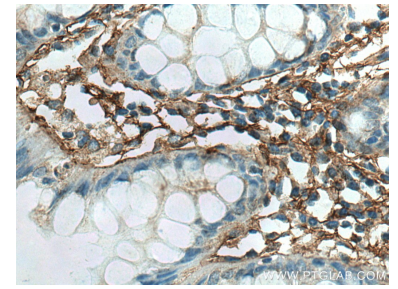
Données de validation sélectionnées



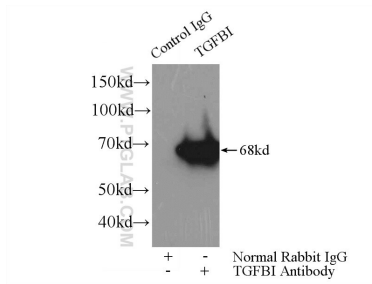
human kidney tissue were subjected to SDS PAGE followed by western blot with 60007-1-Ig (TGFB1 / BIGH3 antibody) at dilution of 1:1000 incubated at room temperature for 1.5 hours.



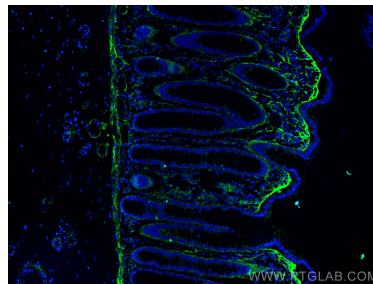
Immunohistochemical analysis of paraffin-embedded human colon tissue slide using 60007-1-Ig (TGFB1 / BIGH3 antibody) at dilution of 1:1000 (under 10x Lens). Heat mediated antigen retrieval with Tris-EDTA buffer (pH 9.0).



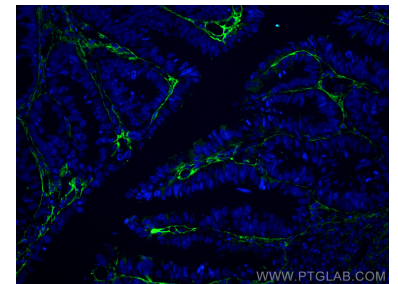
Immunohistochemical analysis of paraffin-embedded human colon tissue slide using 60007-1-Ig (TGFB1 / BIGH3 antibody) at dilution of 1:1000 (under 40x Lens). Heat mediated antigen retrieval with Tris-EDTA buffer (pH 9.0).



IP Result of anti-TGFB1 / BIGH3 (IP:60007-1-Ig, 4ug; Detection:60007-1-Ig 1:300) with HeLa cells lysate 1200ug.



Immunofluorescent analysis of (4% PFA) fixed human colon cancer tissue using TGFB1 / BIGH3 antibody (60007-1-Ig, Clone: 3E11D11) at dilution of 1:400 and CoraLite®488-Conjugated AffiniPure Goat Anti-Mouse IgG(H+L).



Immunofluorescent analysis of (4% PFA) fixed human colon cancer tissue using TGFB1 / BIGH3 antibody (60007-1-Ig, Clone: 3E11D11) at dilution of 1:400 and CoraLite®488-Conjugated AffiniPure Goat Anti-Mouse IgG(H+L).