

À des fins de recherche uniquement

Anticorps Monoclonal anti-Beta Actin



Numéro de catalogue: 60008-1-Ig **2877 Publications**

Informations de base

Numéro de catalogue: 60008-1-Ig	Numéro d'acquisition GenBank: BC002409	Méthode de purification: Précipitation de l'acide caprylique/du sulfate d'ammonium
Taille: 150ul , Concentration: 1000 µg/ml by 60 Nanodrop and 1000 µg/ml by Bradford method using BSA as the standard;	Identification du gène (NCBI): actin, beta	CloneNo.: 7D2C10
Hôte: Mouse	Nom complet: actin, beta	Dilutions recommandées: WB 1:5000-1:50000 IHC 1:50-1:500
Isotype: IgM	MW calculé: 375 aa, 42 kDa	
Immunogen Catalog Number: AG0297	MW observés: 42 kDa	

Applications

Applications testées:

FC, IHC, WB, ELISA

Demandes citées:

CoIP, IF, IHC, IP, WB

Spécificité de l'espèce:

Humain, plante, poisson-zèbre, rat, souris

Espèces citées:

Chèvre, Humain, levure, poulet, rat, arabidopsis

Remarque-IHC: il est suggéré de démasquer l'antigène avec un tampon de TE buffer pH 9,0; (*) A défaut, 'le démasquage de l'antigène peut être 'effectué avec un tampon citrate pH 6,0.

Contrôles positifs:

WB : multi-cellules/tissus, cellules A549, cellules HEK-293, cellules HeLa, cellules MCF-7, tissu végétal entier d'arabidopsis, tissu végétal entier de riz

IHC : tissu de côlon humain, tissu cardiaque humain, tissu cérébral humain, tissu ovarien humain, tissu placentaire humain, tissu pulmonaire humain, tissu rénal humain, tissu splénique humain, tissu testiculaire humain

Informations générales

Beta actin, also named as ACTB and F-Actin, belongs to the actin family. Actins are highly conserved globular proteins that are involved in various types of cell motility and are ubiquitously expressed in all eukaryotic cells. At least six isoforms of actins are known in mammals and other vertebrates: alpha (ACTC1, cardiac muscle 1), alpha 1 (ACTA1, skeletal muscle) and 2 (ACTA2, aortic smooth muscle), beta (ACTB), gamma 1 (ACTG1) and 2 (ACTG2, enteric smooth muscle). Beta and gamma 1 are two non-muscle actin proteins. Most actins consist of 376aa, while ACTG2 (rich in muscles) has 375aa and ACTG1(found in non-muscle cells) has only 374aa. Beta actin has been widely used as the internal control in RT-PCR and Western Blotting as a 42-kDa protein. However, the 37-40 kDa cleaved fragment of beta actin can be generated during apoptosis process. This antibody can recognize all the actins.

Publications notables

Autrice	Pubmed ID	Journal	Application
Qiaoxia Zheng	36198318	Cell	WB
Menghui Xu	36290677	Antioxidants (Basel)	WB
Wu Xiuquan	34600073	Neuroscience	WB

Stockage

Stockage:

Stocker à -20°C. Stable pendant un an après l'expédition.

Tampon de stockage:

PBS avec azoture de sodium à 0,02 % et glycérol à 50 % pH 7,3

L'aliquotage n'est pas nécessaire pour le stockage à -20C

*** Les 20ul contiennent 0,1% de BSA.

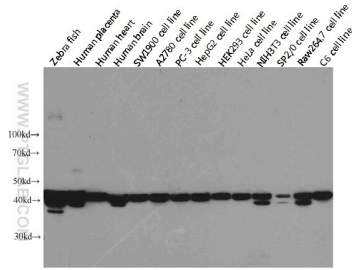
For technical support and original validation data for this product please contact:

T: 1 (888) 4PTGLAB (1-888-478-4522) (toll free in USA), or 1(312) 455-8498 (outside USA)

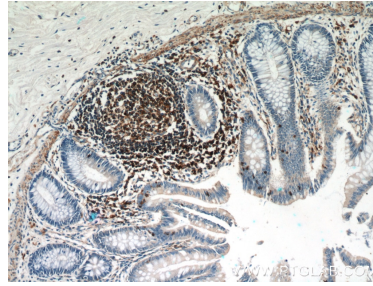
E: proteintech@ptglab.com
W: ptglab.com

This product is exclusively available under Proteintech Group brand and is not available to purchase from any other manufacturer.

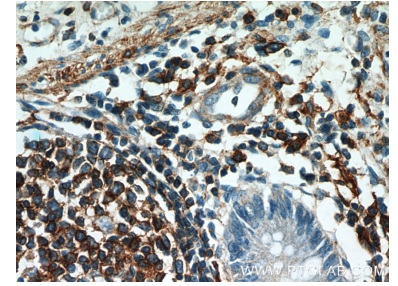
Données de validation sélectionnées



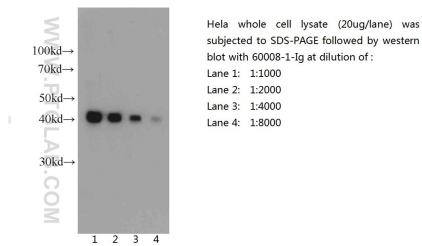
Western blot analysis of Beta-actin in various tissues and cell lines using Proteintech antibody 60008-1-Ig at a dilution of 1:5000. Extra bands were detected in some species with unknown reason.



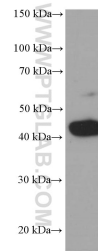
Immunohistochemical analysis of paraffin-embedded human colon using 60008-1-Ig(ActB antibody) at dilution of 1:50 (under 10x lens).



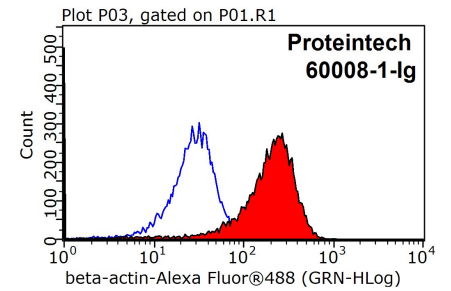
Immunohistochemical analysis of paraffin-embedded human colon using 60008-1-Ig(ActB antibody) at dilution of 1:50 (under 40x lens).



Western blot of HeLa cell with anti-Actin-Beta (60008-1-Ig) at various dilutions.



arabidopsis whole plant tissue were subjected to SDS PAGE followed by western blot with 60008-1-Ig (beta actin Antibody) at dilution of 1:2000 incubated at room temperature for 1.5 hours.



1X10⁶ HepG2 cells were stained with 0.2ug beta actin antibody (60008-1-Ig, red) and control antibody (blue). Fixed with 90% MeOH blocked with 3% BSA (30 min). Alexa Fluor 488-conjugated AffiniPure Goat Anti-Mouse IgG(H+L) with dilution 1:1000.