

À des fins de recherche uniquement

Anticorps Monoclonal anti-KEAP1

Numéro de catalogue: 60027-1-Ig

Phare

74 Publications



Informations de base

Numéro de catalogue:

60027-1-Ig

Taille:

150ul, Concentration: 500 µg/ml by Bradford method using BSA as the standard;

Hôte:

Mouse

Isotype:

IgA

Immunogen Catalog Number:

AG0779

Numéro d'acquisition GenBank:

BC002930

Identification du gène (NCBI):

9817

Nom complet:

kelch-like ECH-associated protein 1

MW calculé

624 aa, 70 kDa

MW observés:

60-70 kDa

Méthode de purification:

Chromatographie d'affinité thiophilique

CloneNo.:

4G10H9

Dilutions recommandées:

WB 1:1000-1:4000

IHC 1:50-1:500

IF 1:200-1:800

Applications

Applications testées:

IF, IHC, WB, ELISA

Demandes citées:

IF, IHC, WB

Spécificité de l'espèce:

Humain, rat, souris

Espèces citées:

Humain, porc, poulet, rat, souris

Remarque-IHC: il est suggéré de démasquer l'antigène avec un tampon de TE buffer pH 9,0; (*) À défaut, 'le démasquage de l'antigène peut être 'effectué avec un tampon citrate pH 6,0.

Contrôles positifs:

WB : cellules 4T1, cellules HeLa, cellules HSC-T6, cellules Jurkat, cellules MCF-7, cellules NIH/3T3

IHC : tissu de cancer du pancréas humain, tissu de muscle squelettique humain, tissu rénal humain

IF : cellules HeLa,

Informations générales

KEAP1, also named as INRF2, KIAA0132 and KLHL19, is part of a multiprotein complex that contains the CUL3-ROC1 ubiquitin ligase, which can ubiquitinate the N-terminal domain of NRF2. Two molecules of KEAP1 bind to two distinct sites in the N-terminal region of NRF2, the ETGE and DLG sites, which affect the KEAP1-NRF2 interaction and/or its physiological consequences. KEAP1 retains NFE2L2/NRF2 in the cytosol. It functions as substrate adapter protein for the E3 ubiquitin ligase complex formed by CUL3 and RBX1. It also retains BPTF in the cytosol. This antibody is a mouse monoclonal antibody raised against residues near the C terminus of human KEAP1.

Publications notables

Autrice	Pubmed ID	Journal	Application
Jinliang Liu	34630847	Oxid Med Cell Longev	WB
Lei Zhao	34582963	Food Chem Toxicol	WB
Yue Li	36234847	Molecules	WB

Stockage

Stockage:

Stocker à -20°C. Stable pendant un an après l'expédition.

Tampon de stockage:

PBS avec azoture de sodium à 0,1 % et glycérol à 50 % pH 7,3

L'aliquotage n'est pas nécessaire pour le stockage à -20C

*** Les 20ul contiennent 0,1% de BSA.

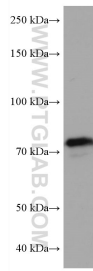
For technical support and original validation data for this product please contact:

T: 1 (888) 4PTGLAB (1-888-478-4522) (toll free in USA), or 1(312) 455-8498 (outside USA)

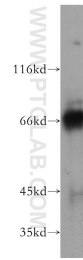
E: proteintech@ptglab.com
W: ptglab.com

This product is exclusively available under Proteintech Group brand and is not available to purchase from any other manufacturer.

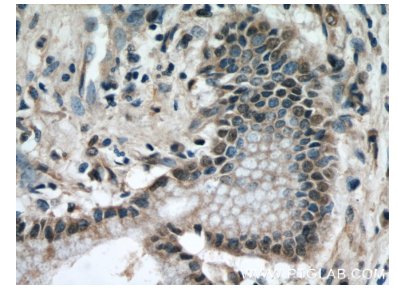
Données de validation sélectionnées



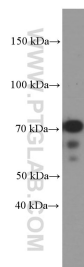
4T1 cells were subjected to SDS PAGE followed by western blot with 60027-1-Ig (KEAP1 antibody) at dilution of 1:2000 incubated at room temperature for 1.5 hours.



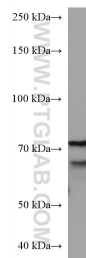
HeLa cells were subjected to SDS PAGE followed by western blot with 60027-1-Ig (KEAP1 antibody) at dilution of 1:400 incubated at room temperature for 1.5 hours.



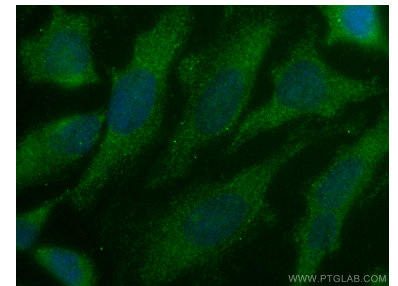
Immunohistochemical analysis of paraffin-embedded human pancreas cancer using 60027-1-Ig(KEAP1 antibody) at dilution of 1:50 (under 40x lens).



MCF-7 cells were subjected to SDS PAGE followed by western blot with 60027-1-Ig (KEAP1 Antibody) at dilution of 1:1000 incubated at room temperature for 1.5 hours.



Jurkat cells were subjected to SDS PAGE followed by western blot with 60027-1-Ig (KEAP1 antibody) at dilution of 1:2000 incubated at room temperature for 1.5 hours.



Immunofluorescent analysis of (-20°C Ethanol) fixed HeLa cells using KEAP1 antibody (60027-1-Ig, Clone: 4G10H9) at dilution of 1:400 and CoraLite@488-Conjugated AffiniPure Goat Anti-Mouse IgG(H+L).