

À des fins de recherche uniquement

Anticorps Monoclonal anti-MME,CD10



Numéro de catalogue: 60034-3-Ig **Phare**

Informations de base

Numéro de catalogue: 60034-3-Ig	Numéro d'acquisition GenBank: BC101658	Méthode de purification: Purification par protéine A
Taille: 150ul, Concentration: 2400 µg/ml by Nanodrop and 1453 µg/ml by Bradford method using BSA as the standard;	Identification du gène (NCBI): 4311	CloneNo.: 4B9D9
Hôte: Mouse	Nom complet: membrane metallo-endopeptidase	Dilutions recommandées: WB 1:500-1:2000 IHC 1:100-1:400
Isotype: IgG1	MW calculé: 750 aa, 86 kDa	
Immunogen Catalog Number: AG0427	MW observés: 100 kDa	

Applications

Applications testées:

FC, IHC, WB, ELISA

Spécificité de l'espèce:

Humain, porc, souris

Remarque-IHC: il est suggéré de démasquer l'antigène avec un tampon de TE buffer pH 9.0; (*) À défaut, 'le démasquage de l'antigène peut être effectué avec un tampon citrate pH 6,0.

Contrôles positifs:

WB : tissu rénal de porc, cellules HEK-293, tissu rénal de souris

IHC : tissu de carcinome à cellules rénales humain, tissu amygdalien humain, tissu hépatique de souris, tissu rénal de souris, tissu rénal humain

Informations générales

MME is also names as neprilysin, CALLA, NEP, SFE, CD10 and belongs to the peptidase M13 family. It is a glycoprotein that is particularly abundant in kidney, where it is present on the brush border of proximal tubules and on glomerular epithelium. CD10 has been considered a useful marker in the diagnosis of renal carcinomas, because of its expression in clear cell and papillary renal cell carcinomas and its absence in chromophobe renal cell carcinomas (PMID:15286660).

Stockage

Stockage:

Stocker à -20°C. Stable pendant un an après l'expédition.

Tampon de stockage:

PBS avec azoture de sodium à 0,02 % et glycérol à 50 % pH 7,3

L'aliquotage n'est pas nécessaire pour le stockage à -20C

*** Les 20ul contiennent 0,1% de BSA.

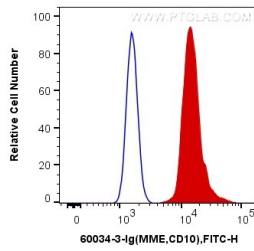
For technical support and original validation data for this product please contact:

T: 1 (888) 4PTGLAB (1-888-478-4522) (toll free in USA), or 1(312) 455-8498 (outside USA)

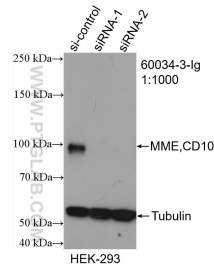
E: proteintech@ptglab.com
W: ptglab.com

This product is exclusively available under Proteintech Group brand and is not available to purchase from any other manufacturer.

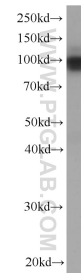
Données de validation sélectionnées



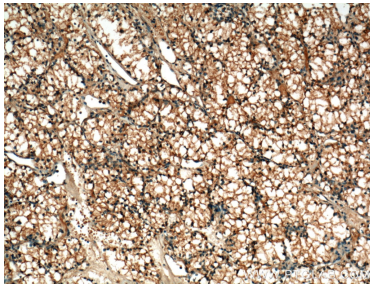
1X10⁶ Ramos cells were intracellularly stained with 0.2 ug Anti-Human MME,CD10 (60034-3-Ig, Clone:4B9D9) and CoraLite®488-Conjugated AffiniPure Goat Anti-Mouse IgG(H+L) at dilution 1:1000 (red), or 0.2 ug Control Antibody. Cells were fixed with 4% PFA and permeabilized with Flow Cytometry Perm Buffer (PF00011-C).



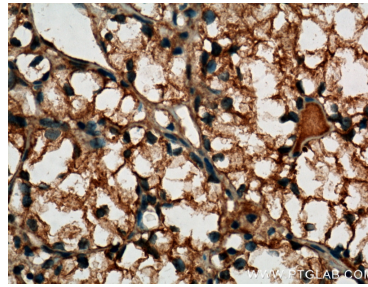
WB result of MME,CD10 antibody (60034-3-Ig; 1:1000; incubated at room temperature for 1.5 hours) with sh-Control and sh-MME,CD10 transfected HEK-293 cells.



pig kidney tissue were subjected to SDS PAGE followed by western blot with 60034-3-Ig (MME,CD10 Antibody) at dilution of 1:1000 incubated at room temperature for 1.5 hours.



Immunohistochemical analysis of paraffin-embedded human renal cell carcinoma tissue slide using 60034-3-Ig (MME,CD10 Antibody) at dilution of 1:400 (under 10x lens). Heat mediated antigen retrieval with Tris-EDTA buffer (pH 9.0).



Immunohistochemical analysis of paraffin-embedded human renal cell carcinoma tissue slide using 60034-3-Ig (MME,CD10 Antibody) at dilution of 1:400 (under 40x lens). Heat mediated antigen retrieval with Tris-EDTA buffer (pH 9.0).