

À des fins de recherche uniquement

Anticorps Monoclonal anti-ATF4

Numéro de catalogue: 60035-1-Ig **29 Publications**



Informations de base

Numéro de catalogue: 60035-1-Ig	Numéro d'acquisition GenBank: BC022088	Méthode de purification: Purification par protéine G
Taille: 150ul , Concentration: 1000 µg/ml by Nanodrop;	Identification du gène (NCBI): 468	CloneNo.: 3E4C5
Hôte: Mouse	Nom complet: activating transcription factor 4 (tax- responsive enhancer element B67)	Dilutions recommandées: WB 1:1000-1:4000
Isotype: IgG1	MW calculé 39 kDa	
Immunogen Catalog Number: AG1279	MW observés: 45-50 kDa	

Applications

Applications testées:
FC, WB, ELISA

Demandes citées:
ChIP, IF, IHC, WB

Spécificité de l'espèce:
Humain, rat, souris

Espèces citées:
Humain, rat, souris

Contrôles positifs:

WB : cellules HepG2, cellules HEK-293, cellules HSC-T6, cellules NIH/3T3, tissu placentaire humain

Informations générales

ATF4 is a transcription factor, that accumulates predominantly in osteoblasts, where it regulates terminal osteoblast differentiation and bone formation. As a basic leucine-zipper (bZip) transcription factor, ATF4 can regulate amino acid metabolism, cellular redox state, and anti-stress responses. It also regulates age-related and diet-induced obesity and glucose homeostasis in mammals, and has conserved metabolic functions in flies. Due to its location at chromosome 22q13, a region linked to schizophrenia, ATF4 is considered as a positional candidate gene for schizophrenia. Otherwise, since ATF4 is induced by tumour microenvironmental factors, and regulates processes relevant to cancer progression, it might serve as a potential therapeutic target in cancer. This antibody is a mouse monoclonal antibody raised against full length human ATF4 antigen. The antibody recognizes the 45-50 kDa ATF4 protein and its phosphorylated forms (50 kDa).

Publications notables

Autrice	Pubmed ID	Journal	Application
Il-Je Cho	34679678	Antioxidants (Basel)	WB
Jingjing Wu	33115703	Biol Open	IF
Peng Liu	36209075	Cell Mol Biol Lett	WB

Stockage

Stockage:

Stocker à -20°C. Stable pendant un an après l'expédition.

Tampon de stockage:

PBS avec azoture de sodium à 0,1 % et glycérol à 50 % pH 7,3

L'aliquotage n'est pas nécessaire pour le stockage à -20C

*** Les 20ul contiennent 0,1% de BSA.

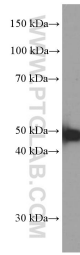
For technical support and original validation data for this product please contact:

T: 1 (888) 4PTGLAB (1-888-478-4522) (toll free
in USA), or 1(312) 455-8498 (outside USA)

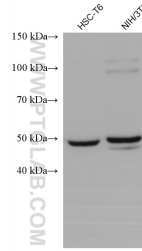
E: proteintech@ptglab.com
W: ptglab.com

This product is exclusively available under Proteintech Group brand and is not available to purchase from any other manufacturer.

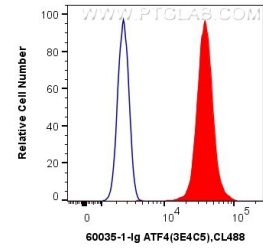
Données de validation sélectionnées



HepG2 cells were subjected to SDS PAGE followed by western blot with 60035-1-Ig (ATF4 Antibody) at dilution of 1:2000 incubated at room temperature for 1.5 hours.



Various lysates were subjected to SDS PAGE followed by western blot with 60035-1-Ig (ATF4 antibody) at dilution of 1:5000 incubated at room temperature for 1.5 hours.



1X10⁶ HeLa cells were intracellularly stained with 0.4 ug Anti-Human ATF4 (60035-1-Ig, Clone:3E4C5) and CoraLite®488-Conjugated AffiniPure Goat Anti-Mouse IgG(H+L) at dilution 1:1000 (red), or 0.4 ug Control Antibody. Cells were fixed and permeabilized with Transcription Factor Staining Buffer Kit (PF00011).