

À des fins de recherche uniquement

# Anticorps Monoclonal anti-SLAM/CD150



Numéro de catalogue: 60043-1-Ig **1 Publications**

## Informations de base

<b>Numéro de catalogue:</b> 60043-1-Ig	<b>Numéro d'acquisition GenBank:</b> BC012602	<b>Méthode de purification:</b> Précipitation de l'acide caprylique/du sulfate d'ammonium
<b>Taille:</b> 150ul , Concentration: 1000 µg/ml by Bradford method using BSA as the standard;	<b>Identification du gène (NCBI):</b> 6504	<b>CloneNo.:</b> 5B4G1
<b>Hôte:</b> mouse	<b>Nom complet:</b> signaling lymphocytic activation molecule family member 1	<b>Dilutions recommandées:</b> WB 1:1000-1:4000
<b>Isotype:</b> IgM	<b>MW calculé:</b> 37 kDa	
<b>Immunogen Catalog Number:</b> AG1386	<b>MW observés:</b> 80 kDa	

## Applications

<b>Applications testées:</b> WB, ELISA	<b>Contrôles positifs:</b> WB : cellules Raji, cellules HUVEC, cellules Jurkat
<b>Demandes citées:</b> WB	
<b>Spécificité de l'espèce:</b> Humain	
<b>Espèces citées:</b> singe	

## Informations générales

Signaling lymphocytic activation molecule (SLAM, also known as SLAMF1 or CD150) is a 70-95 kDa transmembrane glycoprotein that belongs to the immunoglobulin gene superfamily. SLAM is constitutively expressed on peripheral blood memory T-cells, T-cell clones, immature thymocytes and a proportion of B-cells, and is rapidly induced on naive T-cells after activation. SLAM is involved in T cell stimulation and cytokine production, and may play an important role in the regulation of immune responses to pathogens.

## Publications notables

Autrice	Pubmed ID	Journal	Application
Haofei Song	36552462	Animals (Basel)	WB

## Stockage

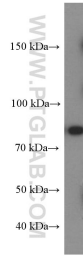
**Stockage:**  
Stocker à -20°C. Stable pendant un an après l'expédition.  
**Tampon de stockage:**  
PBS avec azoture de sodium à 0,1 % et glycérol à 50 % pH 7,3  
L'aliquotage n'est pas nécessaire pour le stockage à -20C

\*\*\* Les 20ul contiennent 0,1% de BSA.

For technical support and original validation data for this product please contact:  
T: 1 (888) 4PTGLAB (1-888-478-4522) (toll free in USA), or 1(312) 455-8498 (outside USA)  
E: proteintech@ptglab.com  
W: ptglab.com

This product is exclusively available under Proteintech Group brand and is not available to purchase from any other manufacturer.

## Données de validation sélectionnées



Raji cells were subjected to SDS PAGE followed by western blot with 60043-1-Ig (SLAM/CD150) antibody at dilution of 1:2000 incubated at room temperature for 1.5 hours.