

À des fins de recherche uniquement

Anticorps Monoclonal anti-Transgelin 2



Numéro de catalogue: 60044-1-Ig

Phare

1 Publications

Informations de base

Numéro de catalogue:

60044-1-Ig

Numéro d'acquisition GenBank:

BC002616

Méthode de purification:

Purification par protéine G

Taille:

150ul, Concentration: 1200 µg/ml by

Bradford method using BSA as the
standard;

Identification du gène (NCBI):

8407

CloneNo.:

2E5G1

Hôte:

Mouse

Nom complet:

transgelin 2

Dilutions recommandées:

WB 1:500-1:2000

IP 0.5-4.0 ug for IP and 1:500-1:2000

for WB

IHC 1:250-1:1000

IF 1:200-1:800

Isotype:

IgG1

MW calculé

199 aa, 22 kDa

MW observés:

22 kDa

Immunogen Catalog Number:

AG0337

Applications

Applications testées:

IF, IHC, IP, WB, ELISA

Demandes citées:

WB

Spécificité de l'espèce:

Humain, souris

Espèces citées:

Humain

Contrôles positifs:

WB : cellules K562, cellules K-562

IP : cellules HEK-293,

IHC : tissu de carcinome urothélial humain, tissu de
cancer du côlon humain, tissu de côlon de souris, tissu
de côlon humain

IF : tissu de cancer du côlon humain, cellules HepG2

**Remarque-IHC: il est suggéré de démasquer
l'antigène avec un tampon de TE buffer pH
9,0; (*) A défaut, 'le démasquage de
l'antigène peut être 'effectué avec un
tampon citrate pH 6,0.**

Informations générales

The transgelin family is a group of proteins that belong to 22 kDa actin-related corpnin superfamily. Of all three isoforms, transgelin 1 is the best characterized. Transgelin 1, also known as SM22 alpha, is a specific marker for differentiated smooth muscle cells. Transgelin 2, also known as SM22 beta, is expressed by both smooth muscle and non-smooth muscle cells in a temporally and spatially regulated pattern. Trangenlin 3, also known as NP25, is only found in highly differentiated neuronal cells. Our test result showed that this antibody is specific to TAGLN2. It does not bind TAGLN1 and TAGLN3.

Publications notables

Autrice	Pubmed ID	Journal	Application
Liu Yang	31485630	Mol Med Rep	WB

Stockage

Stockage:

Stocker à -20°C. Stable pendant un an après l'expédition.

Tampon de stockage:

PBS avec azoture de sodium à 0,1 % et glycérol à 50 % pH 7,3

L'aliquotage n'est pas nécessaire pour le stockage à -20C

*** Les 20ul contiennent 0,1% de BSA.

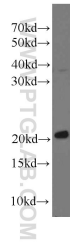
For technical support and original validation data for this product please contact:

T: 1 (888) 4PTGLAB (1-888-478-4522) (toll free
in USA), or 1(312) 455-8498 (outside USA)

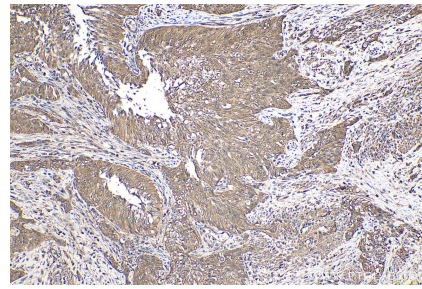
E: proteintech@ptglab.com
W: ptglab.com

This product is exclusively available under Proteintech Group brand and is not available to purchase from any other manufacturer.

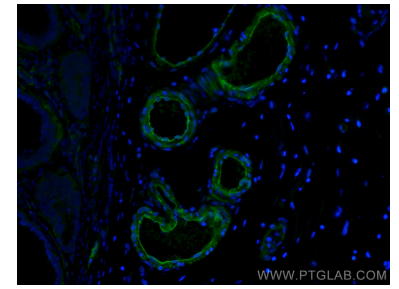
Données de validation sélectionnées



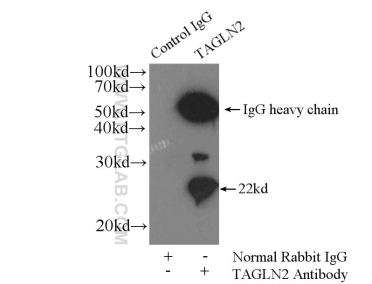
K-562 cells were subjected to SDS PAGE followed by western blot with 60044-1-Ig (Transgelin 2 antibody) at dilution of 1:1000 incubated at room temperature for 1.5 hours.



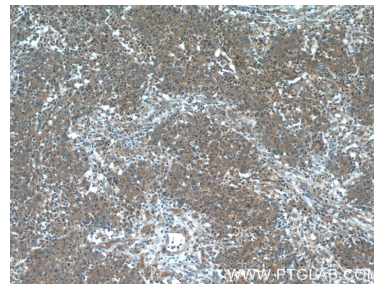
Immunohistochemical analysis of paraffin-embedded human urothelial carcinoma tissue slide using 60044-1-Ig (Transgelin 2 antibody) at dilution of 1:500 (under 10x lens). Heat mediated antigen retrieval with Tris-EDTA buffer (pH 9.0).



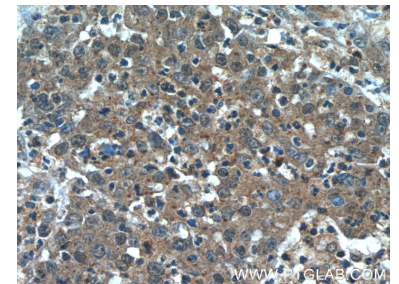
Immunofluorescent analysis of (4% PFA) fixed human colon cancer tissue using Transgelin 2 antibody (60044-1-Ig, Clone: 2E5G1) at dilution of 1:400 and CoraLite®488-Conjugated AffiniPure Goat Anti-Mouse IgG(H+L).



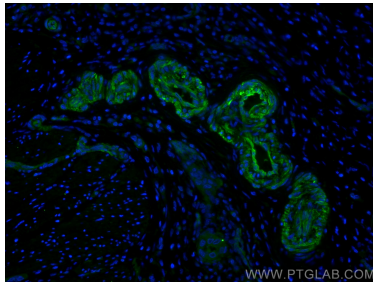
IP Result of anti-Transgelin 2 (IP:60044-1-Ig, 4ug; Detection:60044-1-Ig 1:1000) with HEK-293 cells lysate 1000ug.



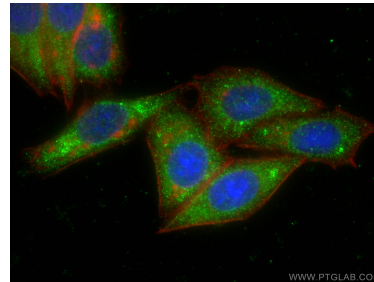
Immunohistochemical analysis of paraffin-embedded human colon cancer tissue slide using 60044-1-Ig (Transgelin 2 antibody at dilution of 1:50 (under 10x lens).



Immunohistochemical analysis of paraffin-embedded human colon cancer tissue slide using 60044-1-Ig (Transgelin 2 antibody at dilution of 1:50 (under 40x lens).



Immunofluorescent analysis of (4% PFA) fixed human colon cancer tissue using Transgelin 2 antibody (60044-1-Ig, Clone: 2E5G1) at dilution of 1:400 and CoraLite®488-Conjugated AffiniPure Goat Anti-Mouse IgG(H+L).



Immunofluorescent analysis of (-20°C Ethanol) fixed HepG2 cells using Transgelin 2 antibody (60044-1-Ig, Clone: 2E5G1) at dilution of 1:800 and CoraLite®488-Conjugated AffiniPure Goat Anti-Mouse IgG(H+L), CL594-Phalloidin (red).