

À des fins de recherche uniquement

Anticorps Monoclonal anti-MGP

Numéro de catalogue: 60055-1-Ig **2 Publications**



Informations de base

Numéro de catalogue: 60055-1-Ig	Numéro d'acquisition GenBank: BC005272	Méthode de purification: Purification par protéine A
Taille: 150ul , Concentration: 2000 µg/ml by Nanodrop and 1000 µg/ml by Bradford method using BSA as the standard;	Identification du gène (NCBI): 4256	CloneNo.: 1A1C3
Hôte: Mouse	Nom complet: matrix Gla protein	Dilutions recommandées: WB 1:2000-1:10000 IHC 1:400-1:1600 IF 1:200-1:800
Isotype: IgG2a	MW calculé: 103 aa, 13 kDa	
Immunogen Catalog Number: AG1091	MW observés: 12 kDa	

Applications

Applications testées:

IF, IHC, WB, ELISA

Demandes citées:

WB

Spécificité de l'espèce:

Humain, souris

Espèces citées:

Humain

Remarque-IHC: il est suggéré de démasquer l'antigène avec un tampon de TE buffer pH 9,0; (*) A défaut, 'le démasquage de l'antigène peut être effectué avec un tampon citrate pH 6,0.

Contrôles positifs:

WB : tissu placentaire humain, salive humaine, salive humaine, tissu cérébral humain, tissu de cancer du foie humain, tissu rénal humain

IHC : tissu de gliome humain, tissu cardiaque humain, tissu cérébral humain, tissu pulmonaire humain, tissu rénal humain

IF : cellules MDA-MB-231, tissu rénal de souris

Informations générales

Matrix Gla protein (MGP) is a vitamin K-dependent, extracellular matrix protein. MGP plays a pivotal role in preventing soft tissue calcification and local mineralization of the vascular wall. Vitamin K deficiency leads to inactive uncarboxylated MGP (ucMGP), which accumulates at sites of arterial calcification. However MGP is synthesized in many tissues and is especially enriched in embryonic tissues and in cancer cells. Defects in MGP are the cause of Keutel syndrome (KS), which is an autosomal recessive disorder characterized by abnormal cartilage calcification, peripheral pulmonary stenosis neural hearing loss and midfacial hypoplasia.

Publications notables

Autrice	Pubmed ID	Journal	Application
Zhenjun Xu	34795497	J Inflamm Res	WB
Weiquan Yuan	37187293	J Biol Chem	WB

Stockage

Stockage:

Stocker à -20°C. Stable pendant un an après l'expédition.

Tampon de stockage:

PBS avec azoture de sodium à 0,1 % et glycérol à 50 % pH 7,3

L'aliquotage n'est pas nécessaire pour le stockage à -20C

*** Les 20ul contiennent 0,1% de BSA.

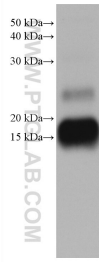
For technical support and original validation data for this product please contact:

T: 1 (888) 4PTGLAB (1-888-478-4522) (toll free in USA), or 1(312) 455-8498 (outside USA)

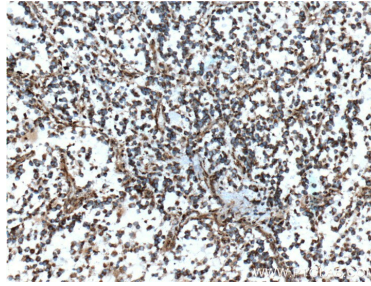
E: proteintech@ptglab.com
W: ptglab.com

This product is exclusively available under Proteintech Group brand and is not available to purchase from any other manufacturer.

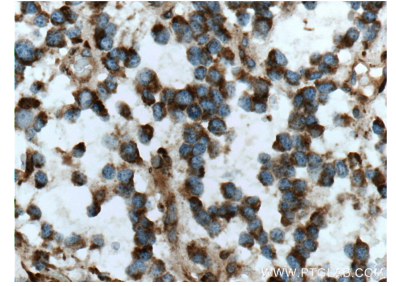
Données de validation sélectionnées



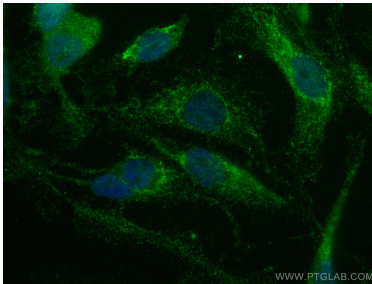
human placenta tissue were subjected to SDS PAGE followed by western blot with 60055-1-Ig (MGP antibody) at dilution of 1:5000 incubated at room temperature for 1.5 hours.



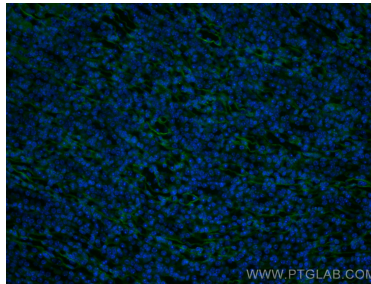
Immunohistochemical analysis of paraffin-embedded human gliomas tissue slide using 60055-1-Ig (MGP Antibody) at dilution of 1:800 (under 10x lens).



Immunohistochemical analysis of paraffin-embedded human gliomas tissue slide using 60055-1-Ig (MGP Antibody) at dilution of 1:800 (under 40x lens).



Immunofluorescent analysis of (4% PFA) fixed MDA-MB-231 cells using MGP antibody (60055-1-Ig, Clone: 1A1C3) at dilution of 1:400 and CoraLite@488-Conjugated AffiniPure Goat Anti-Mouse IgG(H+L).



Immunofluorescent analysis of (4% PFA) fixed mouse kidney tissue using MGP antibody (60055-1-Ig, Clone: 1A1C3) at dilution of 1:400 and CoraLite@488-Conjugated AffiniPure Goat Anti-Mouse IgG(H+L).