

À des fins de recherche uniquement

Anticorps Monoclonal anti-Rab23

Numéro de catalogue: 60056-1-Ig

Phare

1 Publications



Informations de base

Numéro de catalogue: 60056-1-Ig	Numéro d'acquisition GenBank: BC015021	Méthode de purification: Purification par protéine A
Taille: 150ul , Concentration: 747 µg/ml by Bradford method using BSA as the standard;	Identification du gène (NCBI): 51715	CloneNo.: 3E12B6
Hôte: Mouse	Nom complet: RAB23, member RAS oncogene family	Dilutions recommandées: WB 1:500-1:2000
Isotype: IgG1	MW calculé 237 aa, 27 kDa	
Immunogen Catalog Number: AG1588	MW observés: 27-30 kDa	

Applications

Applications testées: WB, ELISA	Contrôles positifs: WB : tissu cérébral humain, cellules HeLa
Demandes citées: WB	
Spécificité de l'espèce: Humain, souris	
Espèces citées: Humain, souris	

Informations générales

Rab23 is a novel member of large Rab small GTPase family. It plays important roles during embryonic development. The brain-enriched Rab23 is the only Rab protein that is known to have a distinct function during central nervous system development, playing an essential role as a negative regulator of the Sonic Hedgehog (Shh) pathway. RAB23 has recently been identified in mesangial cells (MCs), and could serve as a biomarker that indicates the severity of FSGS (focal segmental glomerulosclerosis). Mutations in RAB23 may result in ACP52 (acrocephalopolysyndactyly type 2).

Publications notables

Autrice	Pubmed ID	Journal	Application
Andreas Gerondopoulos	31564489	Curr Biol	WB

Stockage

Stockage:
Stocker à -20°C. Stable pendant un an après l'expédition.
Tampon de stockage:
PBS avec azoture de sodium à 0,02 % et glycérol à 50 % pH 7,3
L'aliquotage n'est pas nécessaire pour le stockage à -20C

*** Les 20ul contiennent 0,1% de BSA.

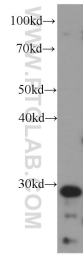
For technical support and original validation data for this product please contact:

T: 1 (888) 4PTGLAB (1-888-478-4522) (toll free in USA), or 1(312) 455-8498 (outside USA)

E: proteintech@ptglab.com
W: ptglab.com

This product is exclusively available under Proteintech Group brand and is not available to purchase from any other manufacturer.

Données de validation sélectionnées



human brain tissue were subjected to SDS PAGE followed by western blot with 60056-1-Ig (RAB23 antibody) at dilution of 1:1000 incubated at room temperature for 1.5 hours.