

À des fins de recherche uniquement

Anticorps Monoclonal anti-ATG5

Numéro de catalogue: 60061-1-Ig

Phare

6 Publications



Informations de base

Numéro de catalogue:

60061-1-Ig

Numéro d'acquisition GenBank:

BC002699

Méthode de purification:

Précipitation de l'acide caprylique/du sulfate d'ammonium

Taille:

150ul, Concentration: 793 µg/ml by Bradford method using BSA as the standard;

Identification du gène (NCBI):

9474

CloneNo.:

3G6E6

Hôte:

Mouse

Nom complet:

ATG5 autophagy related 5 homolog (S. cerevisiae)

Dilutions recommandées:

WB 1:500-1:2000

IHC 1:50-1:500

IF 1:50-1:500

Isotype:

IgM

MW calculé

32 kDa

MW observés:

55 kDa

Immunogen Catalog Number:

AG0214

Applications

Applications testées:

IF, IHC, WB, ELISA

Contrôles positifs:

WB : cellules K-562, cellules HeLa

Demandes citées:

IF, IHC, WB

IHC : tissu de cancer du côlon humain,

Spécificité de l'espèce:

Humain, souris

IF : cellules HeLa,

Espèces citées:

Humain, souris

Remarque-IHC: il est suggéré de démasquer l'antigène avec un tampon de TE buffer pH 9,0; (*) À défaut, le démasquage de l'antigène peut être effectué avec un tampon citrate pH 6,0.

Informations générales

ATG5, also named as APG5L and ASP, belongs to the ATG5 family. It is required for autophagy. It plays an important role in the apoptotic process, possibly within the modified cytoskeleton. Its expression is a relatively late event in the apoptotic process, occurring downstream of caspase activity. Autophagy is a catabolic process for the autophagosomic-lysosomal degradation of bulk cytoplasmic contents. Formation of the autophagosome involves a ubiquitin-like conjugation system in which Atg12 is covalently bound to Atg5 and targeted to autophagosome vesicles. It mediates autophagosome-independent host protection.

Publications notables

| Autrice | Pubmed ID | Journal | Application |
|----------------|-----------|-------------|-------------|
| Shuo Wang | 29039550 | Mol Med Rep | WB |
| Jingjing Zheng | 34058434 | Cells Dev | WB |
| Qian Huang | 32677505 | Autophagy | WB |

Stockage

Stockage:

Stocker à -20°C. Stable pendant un an après l'expédition.

Tampon de stockage:

PBS avec azoture de sodium à 0,02 % et glycérol à 50 % pH 7,3

L'aliquotage n'est pas nécessaire pour le stockage à -20C

*** Les 20ul contiennent 0,1% de BSA.

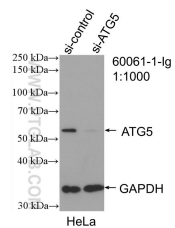
For technical support and original validation data for this product please contact:

T: 1 (888) 4PTGLAB (1-888-478-4522) (toll free in USA), or 1(312) 455-8498 (outside USA)

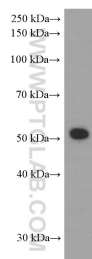
E: proteintech@ptglab.com
W: ptglab.com

This product is exclusively available under Proteintech Group brand and is not available to purchase from any other manufacturer.

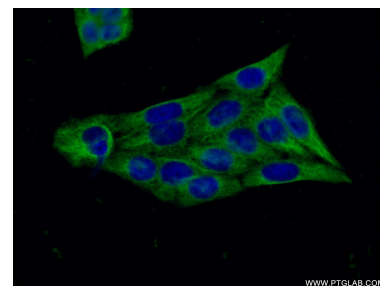
Données de validation sélectionnées



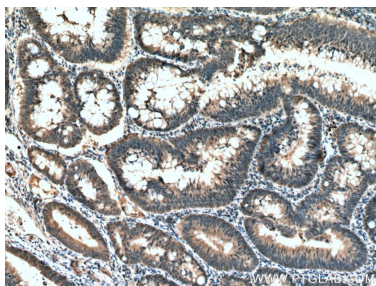
WB result of ATG5 antibody (60061-1-Ig; 1:1000; incubated at room temperature for 1.5 hours) with sh-Control and sh-ATG5 transfected HeLa cells.



K-562 cells were subjected to SDS PAGE followed by western blot with 60061-1-Ig (ATG5 Antibody) at dilution of 1:1000 incubated at room temperature for 1.5 hours.



Immunofluorescent analysis of (-20°C Ethanol) fixed HeLa cells using 60061-1-Ig(ATG5 antibody) at dilution of 1:100 and Alexa Fluor 488-conjugated AffiniPure Goat Anti-Mouse IgG(H+L).



Immunohistochemical analysis of paraffin-embedded human colon cancer tissue slide using 60061-1-Ig (ATG5 antibody) at dilution of 1:200 (under 10x lens). Heat mediated antigen retrieval with Tris-EDTA buffer (pH 9.0).