

À des fins de recherche uniquement

Anticorps Monoclonal anti-GMF Beta



Numéro de catalogue: 60062-1-Ig **4 Publications**

Informations de base

Numéro de catalogue: 60062-1-Ig	Numéro d'acquisition GenBank: BC005359	Méthode de purification: Purification par protéine G
Taille: 150ul , Concentration: 780 µg/ml by Nanodrop and 680 µg/ml by Bradford method using BSA as the standard;	Identification du gène (NCBI): 2764	CloneNo.: 3B10A2
Hôte: Mouse	Nom complet: glia maturation factor, beta	Dilutions recommandées: WB 1:1000-1:8000 IHC 1:50-1:500 IF 1:200-1:800
Isotype: IgG1	MW calculé: 17 kDa	
Immunogen Catalog Number: AG1104	MW observés: 17 kDa	

Applications

Applications testées:

IF, IHC, WB, ELISA

Demandes citées:

IF, IP

Spécificité de l'espèce:

Humain, porc

Espèces citées:

Humain, souris

Remarque-IHC: il est suggéré de démasquer l'antigène avec un tampon de TE buffer pH 9,0; (*) A défaut, 'le démasquage de l'antigène peut être 'effectué avec un tampon citrate pH 6,0.

Contrôles positifs:

WB : tissu cérébral humain fœtal, tissu hépatique de porc

IHC : tissu cérébral humain,

IF : cellules MG U-87, cellules HeLa

Informations générales

GMFB, Glia maturation factor beta, is a nerve growth factor implicated in nervous system development. It was reported that GMF-beta promotes the phenotypic expression of glia and neurons and inhibits the proliferation of their respective tumors in culture cells. GMF-beta protein is specific to the brain where it is expressed in glial cells (mainly astrocytes) and insome neurons. Higher levels of GMFB were found in the central nervous system, except for the spinal cord, and in thymus and colon.

Publications notables

Autrice	Pubmed ID	Journal	Application
Brawnie Petrov	29531242	Transl Psychiatry	IP
Tong Zhu	35860559	Front Oncol	IF
Duraisamy Kempuraj	26275153	PLoS One	IF

Stockage

Stockage:

Stocker à -20°C. Stable pendant un an après l'expédition.

Tampon de stockage:

PBS avec azoture de sodium à 0,02 % et glycérol à 50 % pH 7,3

L'aliquotage n'est pas nécessaire pour le stockage à -20C

*** Les 20ul contiennent 0,1% de BSA.

For technical support and original validation data for this product please contact:

T: 1 (888) 4PTGLAB (1-888-478-4522) (toll free in USA), or 1(312) 455-8498 (outside USA)

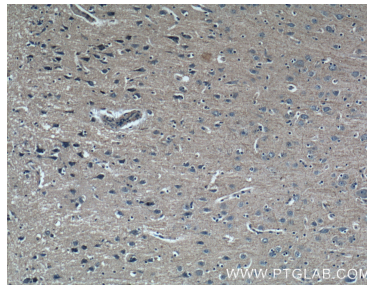
E: proteintech@ptglab.com
W: ptglab.com

This product is exclusively available under Proteintech Group brand and is not available to purchase from any other manufacturer.

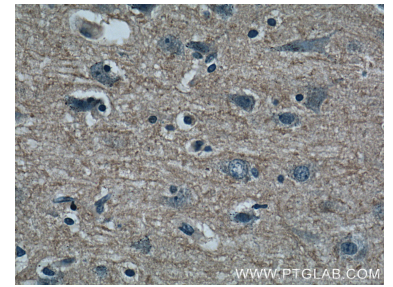
Données de validation sélectionnées



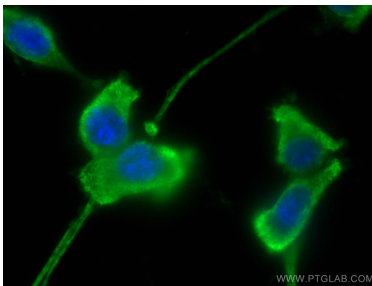
fetal human brain tissue were subjected to SDS PAGE followed by western blot with 60062-1-Ig (GMF-beta antibody at dilution of 1:4000 incubated at room temperature for 1.5 hours.



Immunohistochemical analysis of paraffin-embedded human brain tissue slide using 60062-1-Ig (GMF-beta antibody at dilution of 1:200 (under 10x lens).



Immunohistochemical analysis of paraffin-embedded human brain tissue slide using 60062-1-Ig (GMF-beta antibody at dilution of 1:200 (under 40x lens).



Immunofluorescent analysis of (-20°C Ethanol) fixed U-87 MG cells using GMF Beta antibody (60062-1-Ig, Clone: 3B10A2) at dilution of 1:400 and CoraLite®488-Conjugated AffiniPure Goat Anti-Mouse IgG(H+L).