

À des fins de recherche uniquement

# Anticorps Monoclonal anti-RRM1

Numéro de catalogue: 60073-2-Ig

Phare

6 Publications



## Informations de base

Numéro de catalogue:

60073-2-Ig

Numéro d'acquisition GenBank:

BC006498

Méthode de purification:

Purification par protéine A

Taille:

150ul, Concentration: 2000 µg/ml by Nanodrop and 1000 µg/ml by Bradford method using BSA as the standard;

Identification du gène (NCBI):

6240  
Nom complet:  
ribonucléotide reductase M1

CloneNo.:

5H6F3

Dilutions recommandées:

WB 1:1000-1:4000  
IP 0.5-4.0 µg for IP and 1:500-1:2000 for WB  
IHC 1:3000-1:8000  
IF 1:400-1:1600

Hôte:

Mouse

MW calculé

90 kDa

Isotype:

IgG2b

MW observés:

90 kDa

Immunogen Catalog Number:

AG0789

## Applications

Applications testées:

IF, IHC, IP, WB, ELISA

Demandes citées:

IF, IHC, WB

Spécificité de l'espèce:

Humain

Espèces citées:

Humain

**Remarque-IHC: il est suggéré de démasquer l'antigène avec un tampon de TE buffer pH 9,0; (\*) A défaut, 'le démasquage de l'antigène peut être 'effectué avec un tampon citrate pH 6,0.**

Contrôles positifs:

WB : cellules K-562, cellules HeLa

IP : cellules K-562,

IHC : tissu de cancer du sein humain, tissu de cancer du côlon humain, tissu de cancer du pancréas humain, tissu de cancer du poumon humain, tissu de carcinome urothélial humain

IF : cellules HepG2, cellules HeLa, tissu de cancer du sein humain

## Informations générales

Ribonucléoside-diphosphate reductase functions as a heterodimer of a large and a small subunits in deoxyribonucleotide synthesis. RRM1 constitutes to the large subunit (R1) of ribonucléotide reductase, and it can either form heterodimer with small subunit RRM or RRM2B(PMID:16376858). RRM1 provides the precursors necessary for DNA synthesis. RRM1 can not be detected in quiescent cells, while its mRNA and protein are present throughout the cell cycle in cycling cells(PMID:8188248). Researches showed that RRM1 is involved in carcinogenesis, tumor progression, and the resistance of non-small-cell lung cancer (NSCLC) to treatment. Low level expression of RRM1 in NSCLC is associated with poor survival(PMID:17314339).

## Publications notables

Autrice	Pubmed ID	Journal	Application
Toru Aoyama	28521448	Oncol Lett	IHC
Donghua Geng	35837166	J Gastrointest Oncol	WB
Sean G Rudd	31950591	EMBO Mol Med	WB

## Stockage

Stockage:

Stocker à -20°C. Stable pendant un an après l'expédition.

Tampon de stockage:

PBS avec azotate de sodium à 0,02 % et glycérol à 50 % pH 7,3

L'aliquoteage n'est pas nécessaire pour le stockage à -20C

\*\*\* Les 20ul contiennent 0,1% de BSA.

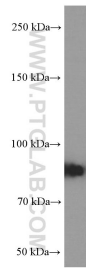
For technical support and original validation data for this product please contact:

T: 1 (888) 4PTGLAB (1-888-478-4522) (toll free in USA), or 1(312) 455-8498 (outside USA)

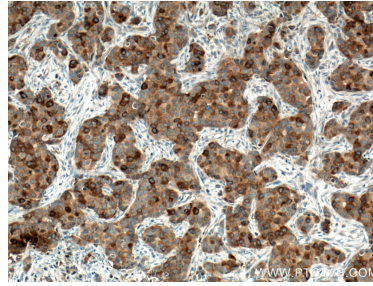
E: proteintech@ptglab.com  
W: ptglab.com

This product is exclusively available under Proteintech Group brand and is not available to purchase from any other manufacturer.

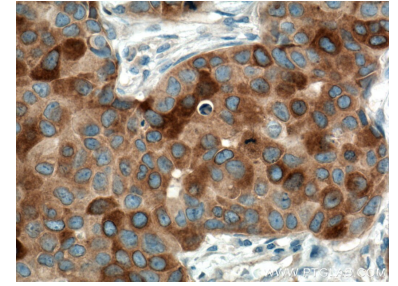
## Données de validation sélectionnées



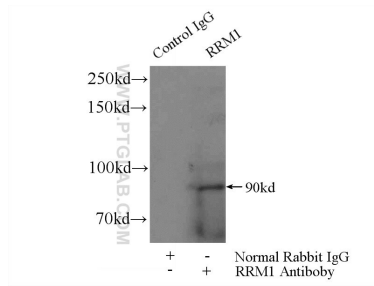
K-562 cells were subjected to SDS PAGE followed by western blot with 60073-2-Ig (RRM1 Antibody) at dilution of 1:2000 incubated at room temperature for 1.5 hours.



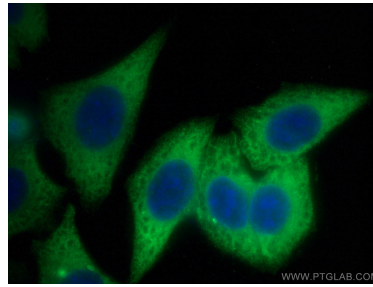
Immunohistochemical analysis of paraffin-embedded human breast cancer tissue slide using 60073-2-Ig (RRM1 antibody) at dilution of 1:5000 (under 10x lens. Heat mediated antigen retrieval with Tris-EDTA buffer (pH 9.0).



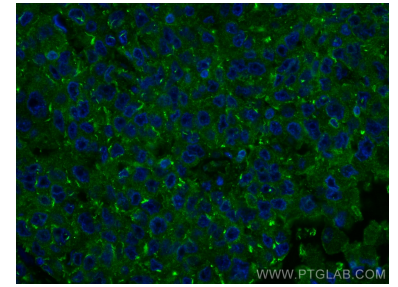
Immunohistochemical analysis of paraffin-embedded human breast cancer tissue slide using 60073-2-Ig (RRM1 antibody) at dilution of 1:5000 (under 40x lens. Heat mediated antigen retrieval with Tris-EDTA buffer (pH 9.0).



IP Result of anti-RRM1 (IP:60073-2-Ig, 5ug; Detection:60073-2-Ig 1:1000) with K-562 cells lysate 3440ug.



Immunofluorescent analysis of (-20°C Methanol) fixed HepG2 cells using RRM1 antibody (60073-2-Ig, Clone: 5H6F3 ) at dilution of 1:800 and CoraLite@488-Conjugated AffiniPure Goat Anti-Mouse IgG(H+L).



Immunofluorescent analysis of (4% PFA) fixed human breast cancer tissue using RRM1 antibody (60073-2-Ig, Clone: 5H6F3 ) at dilution of 1:400 and CoraLite@488-Conjugated AffiniPure Goat Anti-Mouse IgG(H+L).