

À des fins de recherche uniquement

Anticorps Monoclonal anti-Septin 2

Numéro de catalogue: 60075-1-Ig

Phare

14 Publications



Informations de base

Numéro de catalogue: 60075-1-Ig	Numéro d'acquisition GenBank: BC014455	Méthode de purification: Purification par protéine G
Taille: 150ul, Concentration: 1000 µg/ml by Nanodrop;	Identification du gène (NCBI): 4735	CloneNo.: 2F3B2
Hôte: Mouse	Nom complet: septin 2	Dilutions recommandées: WB 1:20000-1:100000 IHC 1:50-1:2000 IF 1:20-1:200
Isotype: IgG1	MW calculé 41 kDa	
Immunogen Catalog Number: AG1946	MW observés: 42-45 kDa	

Applications

Applications testées:
FC, IF, IHC, WB, ELISA

Demandes citées:
CoIP, IF, WB

Spécificité de l'espèce:
Humain, rat, souris

Espèces citées:
Humain, souris

Remarque-IHC: il est suggéré de démasquer l'antigène avec un tampon de TE buffer pH 9,0; (*) À défaut, le démasquage de l'antigène peut être effectué avec un tampon citrate pH 6,0.

Contrôles positifs:

WB : cellules LNCaP, cellules 4T1, cellules HEK-293, cellules HeLa, cellules HepG2, cellules HSCT6, cellules HSC-T6, cellules Jurkat, cellules K-562, cellules MCF-7, cellules Neuro-2a, cellules NIH/3T3, cellules ROS1728, tissu cérébral humain fœtal, tissu testiculaire humain

IHC : tissu de carcinome à cellules rénales humain, tissu cérébral humain, tissu de cancer du foie humain

IF : cellules hTERT-RPE, cellules K-562

Informations générales

Septin 2, also named as DIFF6, KIAA0158, NEDD5, belongs to the septin family. It is a filament-forming cytoskeletal GTPase. Septin 2 is required for normal organization of the actin cytoskeleton. It plays a role in ciliogenesis and collective cell movements. Septin 2 is coordinated expression with Septin 6 and Septin 7. (PMID:21737677)

Publications notables

Autrice	Pubmed ID	Journal	Application
Lei Wang	34782749	Cell Res	WB
Damián Lobato-Márquez	29752866	Cytoskeleton (Hoboken)	WB,IF
Oleg V Kim	35832887	iScience	CoIP

Stockage

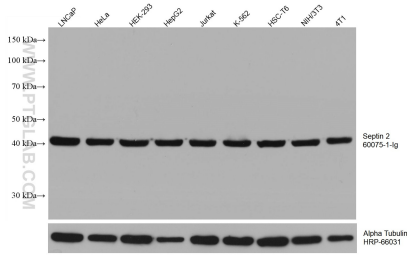
Stockage:
Stocker à -20°C. Stable pendant un an après l'expédition.
Tampon de stockage:
PBS avec azoture de sodium à 0,1 % et glycérol à 50 % pH 7,3
L'aliquotage n'est pas nécessaire pour le stockage à -20C

*** Les 20ul contiennent 0,1% de BSA.

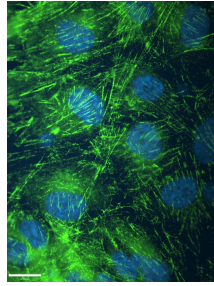
For technical support and original validation data for this product please contact:
T: 1 (888) 4PTGLAB (1-888-478-4522) (toll free in USA), or 1(312) 455-8498 (outside USA)
E: proteintech@ptglab.com
W: ptglab.com

This product is exclusively available under Proteintech Group brand and is not available to purchase from any other manufacturer.

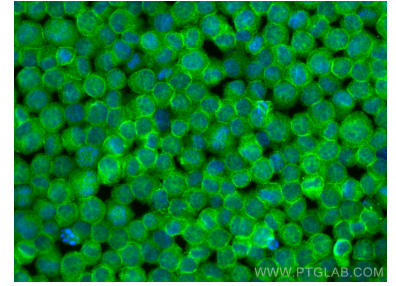
Données de validation sélectionnées



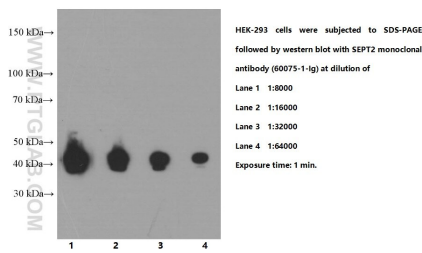
Various lysates were subjected to SDS PAGE followed by western blot with 60075-1-Ig (Septin 2 antibody) at dilution of 1:100000 incubated at room temperature for 1.5 hours. The membrane was stripped and reblotted with HRP-conjugated Alpha Tubulin Monoclonal antibody (HRP-66031) as loading control.



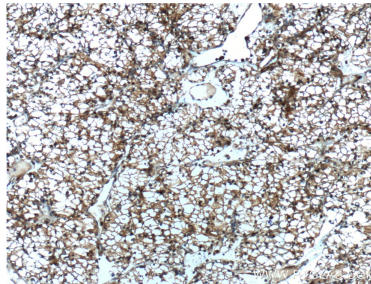
IF result of anti-Septin 2 (60075-1-Ig, 1:1000) with hTERT-RPE cell by Dr. Moshe Kim. Green: Septin 2. Blue: DNA. 1% PFA fixed.



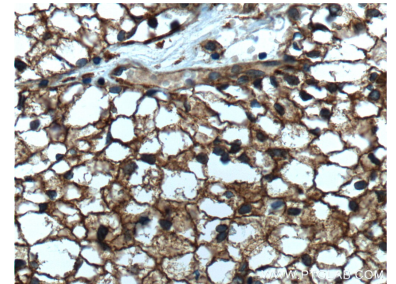
Immunofluorescent analysis of (4% PFA) fixed K-562 cells using Septin 2 antibody (60075-1-Ig, Clone: 2F3B2) at dilution of 1:800 and CoraLite®488-Conjugated AffiniPure Goat Anti-Mouse IgG(H+L).



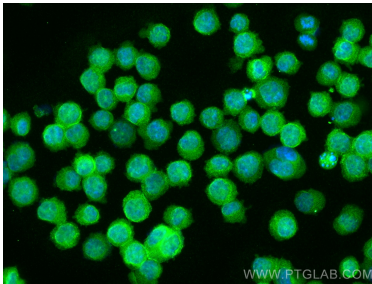
HEK-293 cells were subjected to SDS PAGE followed by western blot with 60075-1-Ig (Septin 2 Antibody) at various dilutions incubated at room temperature for 1.5 hours.



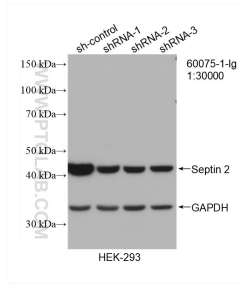
Immunohistochemical analysis of paraffin-embedded human renal cell carcinoma tissue slide using 60075-1-Ig (Septin 2 Antibody) at dilution of 1:800 (under 10x lens). Heat mediated antigen retrieval with Tris-EDTA buffer (pH 9.0).



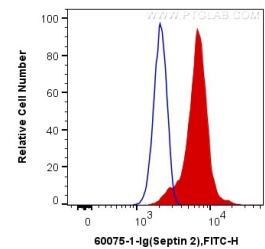
Immunohistochemical analysis of paraffin-embedded human renal cell carcinoma tissue slide using 60075-1-Ig (Septin 2 Antibody) at dilution of 1:800 (under 40x lens). Heat mediated antigen retrieval with Tris-EDTA buffer (pH 9.0).



Immunofluorescent analysis of (4% PFA) fixed K-562 cells using Septin 2 antibody (60075-1-Ig, Clone: 2F3B2) at dilution of 1:800 and CoraLite®488-Conjugated AffiniPure Goat Anti-Mouse IgG(H+L).



WB result of Septin 2 antibody (60075-1-Ig; 1:30000; incubated at room temperature for 1.5 hours) with sh-Control and sh-Septin 2 transfected HEK-293 cells.



1X10⁶ K-562 cells were intracellularly stained with 0.4 ug Anti-Human Septin 2 (60075-1-Ig, Clone:2F3B2) and CoraLite®488-Conjugated AffiniPure Goat Anti-Mouse IgG(H+L) at dilution 1:1000 (red), or 0.4 ug Control Antibody. Cells were fixed with 4% PFA and permeabilized with Flow Cytometry Perm Buffer (PF00011-C).