

À des fins de recherche uniquement

Anticorps Monoclonal anti-GDI2

Numéro de catalogue: 60078-1-Ig



Informations de base

Numéro de catalogue: 60078-1-Ig	Numéro d'acquisition GenBank: BC005145	Méthode de purification: Purification par protéine G
Taille: 150ul, Concentration: 1000 µg/ml by Nanodrop and 1000 µg/ml by Bradford method using BSA as the standard;	Identification du gène (NCBI): 2665	CloneNo.: 4B8F3
Hôte: Mouse	Nom complet: GDP dissociation inhibitor 2	Dilutions recommandées: WB 1:2000-1:10000 IHC 1:20-1:200 IF 1:400-1:1600
Isotype: IgG1	MW calculé: 47 kDa	
Immunogen Catalog Number: AG4613	MW observés: 46 kDa	

Applications

Applications testées:

IF, IHC, WB, ELISA

Spécificité de l'espèce:

Humain, souris

Remarque-IHC: il est suggéré de démasquer l'antigène avec un tampon de TE buffer pH 9,0; (*) À défaut, 'le démasquage de l'antigène peut être effectué avec un tampon citrate pH 6,0.

Contrôles positifs:

WB : cellules HeLa, cellules HEK-293, cellules HepG2, cellules HSC-T6, cellules Jurkat, cellules K-562, cellules NIH/3T3

IHC : tissu de cancer du sein humain, tissu de cancer du foie humain

IF : cellules HeLa,

Informations générales

GDP dissociation inhibitors (GDIs) are proteins that regulate the GDP-GTP exchange reaction of members of the rab family, GDIs can bind and release GDP-bound Rab proteins from membranes. Two GDI proteins towards different Rab proteins have been identified. GDI 1 interacts with almost all of the Rab proteins, while GDI2 interacts with Rab11 but not Rab3A. GDI2 distributes ubiquitously, displaying a membrane bound location in perinuclear regions of cells. GDI-2 was thought to be involved in cellular response to insulin. It electrophoreses as a 46kd protein in SDS-PAGE. (PMID: 7929030; PMID: 19570034). This antibody can bind both GDIs for the close sequences.

Stockage

Stockage:

Stocker à -20°C. Stable pendant un an après l'expédition.

Tampon de stockage:

PBS avec azoture de sodium à 0,1 % et glycérol à 50 % pH 7,3

L'aliquotage n'est pas nécessaire pour le stockage à -20C

*** Les 20ul contiennent 0,1% de BSA.

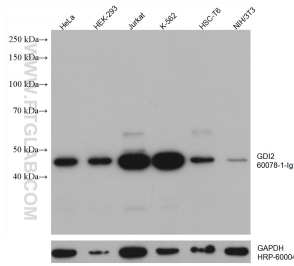
For technical support and original validation data for this product please contact:

T: 1 (888) 4PTGLAB (1-888-478-4522) (toll free
in USA), or 1(312) 455-8498 (outside USA)

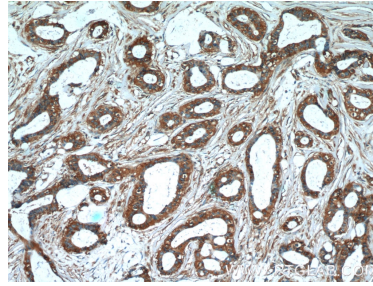
E: proteintech@ptglab.com
W: ptglab.com

This product is exclusively available under Proteintech Group brand and is not available to purchase from any other manufacturer.

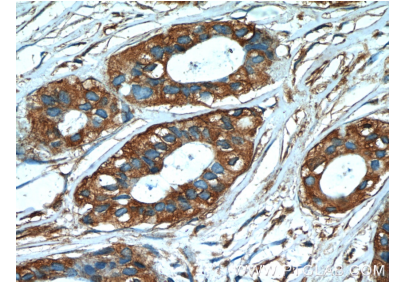
Données de validation sélectionnées



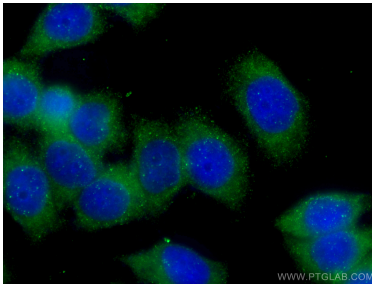
Various lysates were subjected to SDS PAGE followed by western blot with 60078-1-Ig (GDI2 antibody) at dilution of 1:5000 incubated at room temperature for 1.5 hours. The membrane was stripped and reblotted with HRP-conjugated GAPDH Monoclonal antibody (HRP-60004) as loading control.



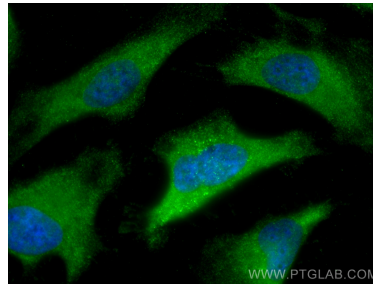
Immunohistochemical analysis of paraffin-embedded human breast cancer tissue slide using 60078-1-Ig (GDI2 Antibody) at dilution of 1:50 (under 10x lens).



Immunohistochemical analysis of paraffin-embedded human breast cancer tissue slide using 60078-1-Ig (GDI2 Antibody) at dilution of 1:50 (under 40x lens).



Immunofluorescent analysis of (-20°C Ethanol) fixed HeLa cells using 60078-1-Ig (GDI2 antibody) at dilution of 1:100 and CoraLite488-Conjugated AffiniPure Goat Anti-Mouse IgG(H+L).



Immunofluorescent analysis of (-20°C Methanol) fixed HeLa cells using GDI2 antibody (60078-1-Ig, Clone: 4B8F3) at dilution of 1:800 and CoraLite@488-Conjugated AffiniPure Goat Anti-Mouse IgG(H+L).