

À des fins de recherche uniquement

Anticorps Monoclonal anti-BORIS

Numéro de catalogue: 60079-1-Ig **1 Publications**



Informations de base

Numéro de catalogue: 60079-1-Ig	Numéro d'acquisition GenBank: BC130486	Méthode de purification: Purification par protéine A
Taille: 150ul, Concentration: 713 µg/ml by Bradford method using BSA as the standard;	Identification du gène (NCBI): 140690	CloneNo.: 2B12E2
Hôte: Mouse	Nom complet: CCCTC-binding factor (zinc finger protein)-like	Dilutions recommandées: WB 1:500-1:2000 IF 1:200-1:800
Isotype: IgG1	MW calculé 82 kDa, 75 kDa	
Immunogen Catalog Number: AG1003	MW observés: 75 kDa	

Applications

Applications testées: IF, WB, ELISA	Contrôles positifs: WB : cellules HeLa, cellules SMMC-7721 IF : cellules HeLa,
Demandes citées: WB	
Spécificité de l'espèce: Humain, souris	
Espèces citées: Humain	

Informations générales

CTCF, also named BORIS (for brother of the regulator of imprinted sites) is a paralogue of the 11 zinc-finger transcription factor, CTCF. It is predominantly expressed in spermatocytes in the testis, also can be found in tumors and cancer cell lines. It mainly participates in insulator function, nuclear architecture and transcriptional control, which probably acts by recruiting epigenetic chromatin modifiers. It has a key role in gene imprinting in male germline, by participating in the establishment of differential methylation at the IGF2/H19 imprinted control region (ICR). Directly binds the unmethylated H19 ICR and recruits the PRMT7 methyltransferase, leading to methylate histone H4 'Arg-3' to form H4R3me2.

Publications notables

Autrice	Pubmed ID	Journal	Application
Kui Xiao	34714841	PLoS One	WB

Stockage

Stockage:
Stocker à -20°C. Stable pendant un an après l'expédition.
Tampon de stockage:
PBS avec azoture de sodium à 0,1 % et glycérol à 50 % pH 7,3
L'aliquotage n'est pas nécessaire pour le stockage à -20C

*** Les 20ul contiennent 0,1% de BSA.

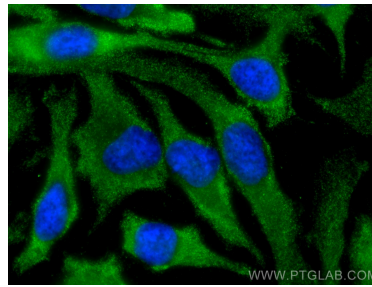
For technical support and original validation data for this product please contact:
T: 1 (888) 4PTGLAB (1-888-478-4522) (toll free in USA), or 1(312) 455-8498 (outside USA)
E: proteintech@ptglab.com
W: ptglab.com

This product is exclusively available under Proteintech Group brand and is not available to purchase from any other manufacturer.

Données de validation sélectionnées



HeLa cells were subjected to SDS PAGE followed by western blot with 60079-1-Ig (BORIS antibody) at dilution of 1:1000 incubated at room temperature for 1.5 hours.



Immunofluorescent analysis of (-20°C Methanol) fixed HeLa cells using BORIS antibody (60079-1-Ig, Clone: 2B12E2) at dilution of 1:400 and CoraLite®488-Conjugated AffiniPure Goat Anti-Mouse IgG(H+L).