

À des fins de recherche uniquement

Anticorps Monoclonal anti-Fibulin 5

Numéro de catalogue: 60081-1-Ig

Phare

5 Publications



Informations de base

Numéro de catalogue:

60081-1-Ig

Numéro d'acquisition GenBank:

BC022280

Méthode de purification:

Précipitation de l'acide caprylique/du sulfate d'ammonium

Taille:

150ul, Concentration: 2000 µg/ml by Nanodrop and 1200 µg/ml by Bradford method using BSA as the standard;

Identification du gène (NCBI):

10516

CloneNo.:

2A5C8

Hôte:

Mouse

Nom complet:

fibulin 5

Dilutions recommandées:

WB 1:1000-1:6000

IF 1:50-1:100

Isotype:

IgG1

MW calculé

448 aa, 50 kDa

MW observés:

65 kDa

Immunogen Catalog Number:

AG2859

Applications

Applications testées:

IF, WB, ELISA

Demandes citées:

IF, IHC, WB

Spécificité de l'espèce:

Humain, porc, rat, souris

Espèces citées:

Humain, souris

Contrôles positifs:

WB : cellules MCF-7, tissu cardiaque de porc, tissu cardiaque de rat, tissu cardiaque humain, tissu placentaire humain

IF : cellules A549,

Informations générales

Fibulin-5, also known as EVEC and DANCE, is a extracellular matrix glycoprotein, secreted by various cell types such as vascular smooth muscle cells, fibroblasts and endothelial cells. Structurally, Fibulin-5 contains an Arg-Gly-Asp (RGD) motif and calcium-binding EGF-like domains. It promotes adhesion of endothelial cells through interaction of integrins and the RGD motif. FBLN5 mutations have been described in patients with age-related macular degeneration, as well as being involved in Charcot-Marie-Tooth neuropathies.

Publications notables

Autrice	Pubmed ID	Journal	Application
Emna Ouni	35341935	Matrix Biol	IF
Chung-Feng Hwang	24386352	PLoS One	IHC
Dongdong Yao	34474906	Mater Sci Eng C Mater Biol Appl	WB, IF

Stockage

Stockage:

Stocker à -20°C. Stable pendant un an après l'expédition.

Tampon de stockage:

PBS avec azoture de sodium à 0,1 % et glycérol à 50 % pH 7,3

L'aliquotage n'est pas nécessaire pour le stockage à -20C

*** Les 20ul contiennent 0,1% de BSA.

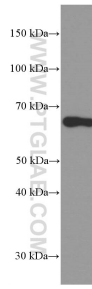
For technical support and original validation data for this product please contact:

T: 1 (888) 4PTGLAB (1-888-478-4522) (toll free in USA), or 1(312) 455-8498 (outside USA)

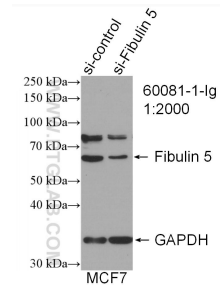
E: proteintech@ptglab.com
W: ptglab.com

This product is exclusively available under Proteintech Group brand and is not available to purchase from any other manufacturer.

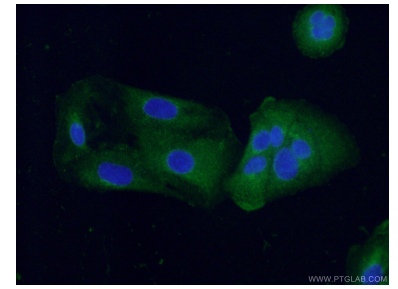
Données de validation sélectionnées



MCF-7 cells were subjected to SDS PAGE followed by western blot with 60081-1-Ig (Fibulin 5 antibody) at dilution of 1:3000 incubated at room temperature for 1.5 hours.



WB result of Fibulin 5 antibody (60081-1-Ig; 1:2000; incubated at room temperature for 1.5 hours) with sh-Control and sh-Fibulin 5 transfected MCF-7 cells.



Immunofluorescent analysis of (-20°C Ethanol) fixed A549 cells using 60081-1-Ig(Fibulin 5 antibody) at dilution of 1:100 and Alexa Fluor 488-conjugated AffiniPure Goat Anti-Mouse IgG(H+L).