

À des fins de recherche uniquement

# Anticorps Monoclonal anti-DACH1

Numéro de catalogue: 60082-1-Ig

Phare

2 Publications



## Informations de base

Numéro de catalogue: 60082-1-Ig	Numéro d'acquisition GenBank: BC021219	Méthode de purification: Purification par protéine G
Taille: 150ul , Concentration: 1300 µg/ml by Nanodrop and 827 µg/ml by Bradford method using BSA as the standard;	Identification du gène (NCBI): 1602 dachshund homolog 1 (Drosophila)	CloneNo.: 3B6D2
Hôte: Mouse	Nom complet: dachsund homolog 1 (Drosophila)	Dilutions recommandées: WB 1:1000-1:4000 IF 1:500-1:2000
Isotype: IgG1	MW calculé: 79 kDa	
Immunogen Catalog Number: AG4474	MW observés: 97-110 kDa	

## Applications

### Applications testées:

IF, IHC, WB, ELISA

### Demandes citées:

WB

### Spécificité de l'espèce:

Humain, rat, souris

### Espèces citées:

Humain

**Remarque-IHC: il est suggéré de démasquer l'antigène avec un tampon de TE buffer pH 9,0; (\*) A défaut, le démasquage de l'antigène peut être effectué avec un tampon citrate pH 6,0.**

### Contrôles positifs:

WB : cellules MCF-7, cellules C6, cellules HEK-293, cellules LO2, cellules ROS1728

IF : cellules HEK-293, tissu cérébral de souris, tissu embryonnaire de souris

## Informations générales

DACH1, a homologue of the Drosophila dachshund gene, is a key regulator of cell fate determination during eye, leg, and brain development in the fly. Through interacting with NCoR and Smad4, DACH1 is able to inhibit the transforming growth factor-beta (TGF-beta) signaling pathway. DACH1 can inhibit breast cancer cellular proliferation via cyclin D1, suggesting a possible role in tumor suppression. Additionally, DACH1 plays an important role in negative regulation of RANKL (Receptor activator of NF-kappaB ligand) gene expression in marrow stromal/preosteoblast cells, and loss of DACH1 expression might be involved in endometrial cancer progression. Four isoforms of DACH1 are produced by alternative splicing, but isoform1(97-110kd) is the predominantly expressed form in tissue. This antibody is a mouse monoclonal antibody raised against residues near the C terminus of human DACH1.

## Publications notables

Autrice	Pubmed ID	Journal	Application
Shengru Liang	36511182	Cell Biol Int	WB
Qiang Gu	36959804	Front Oncol	WB

## Stockage

### Stockage:

Stocker à -20°C. Stable pendant un an après l'expédition.

### Tampon de stockage:

PBS avec azote de sodium à 0,02 % et glycérol à 50 % pH 7,3

L'aliquotage n'est pas nécessaire pour le stockage à -20C

\*\*\* Les 20ul contiennent 0,1% de BSA.

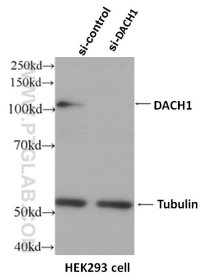
For technical support and original validation data for this product please contact:

T: 1 (888) 4PTGLAB (1-888-478-4522) (toll free in USA), or 1(312) 455-8498 (outside USA)

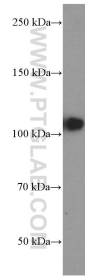
E: proteintech@ptglab.com  
W: ptglab.com

This product is exclusively available under Proteintech Group brand and is not available to purchase from any other manufacturer.

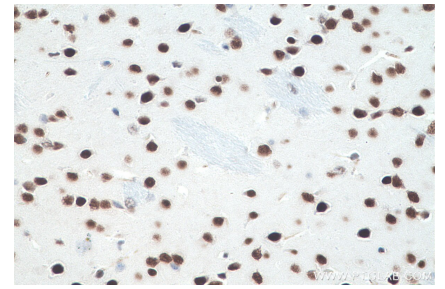
## Données de validation sélectionnées



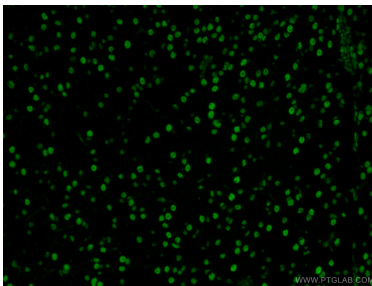
WB result of DACH1 (60082-1-Ig, 1:5000) with si-control and si-DACH1 transfected HEK293 cells.



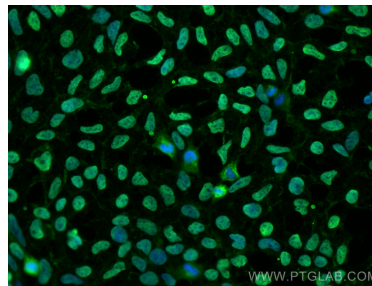
MCF-7 cells were subjected to SDS PAGE followed by western blot with 60082-1-Ig (DACH1 Antibody) at dilution of 1:2000 incubated at room temperature for 1.5 hours.



Immunohistochemical analysis of paraffin-embedded mouse brain tissue slide using 60082-1-Ig (DACH1 antibody) at dilution of 1:1 (under 40x lens). Heat mediated antigen retrieval with Tris-EDTA buffer (pH 9.0).



Immunofluorescent analysis of (4% PFA) fixed mouse brain tissue using 60082-1-Ig (DACH1 antibody) at dilution of 1:100 and Alexa Fluor 488-Conjugated AffiniPure Goat Anti-Mouse IgG(H+L).



Immunofluorescent analysis of (4% PFA) fixed HEK-293 cells using DACH1 antibody (60082-1-Ig, Clone: 3B6D2 ) at dilution of 1:1000 and CoraLite® 488-Conjugated AffiniPure Goat Anti-Mouse IgG(H+L).