

À des fins de recherche uniquement

Anticorps Monoclonal anti-ITM2C

Numéro de catalogue: 60095-1-Ig **1 Publications**



Informations de base

Numéro de catalogue: 60095-1-Ig	Numéro d'acquisition GenBank: BC025742	Méthode de purification: Purification par protéine A
Taille: 150ul , Concentration: 2100 µg/ml by Nanodrop and 953 µg/ml by Bradford method using BSA as the standard;	Identification du gène (NCBI): 81618	CloneNo.: 2E8G11
Hôte: Mouse	Nom complet: integral membrane protein 2C	Dilutions recommandées: IF 1:20-1:200
Isotype: IgG2a	MW calculé 230aa,26 kDa; 267aa,30 kDa	
Immunogen Catalog Number: AG4409	MW observés: 35 kDa	

Applications

Applications testées: FC, IF, ELISA	Contrôles positifs: IF : cellules HepG2,
Demandes citées: FC	
Spécificité de l'espèce: Humain	
Espèces citées: Humain	

Informations générales

The Integral membrane protein 2C (ITM2C) is a type II integral transmembrane protein belonging to a family composed of at least two other members, ITM2A and ITM2B. ITM2C, often called transmembrane protein BRI3, is highly expressed in brain tissue. Yeast two-hybrid screen system revealed that BRI3 could interact with beta-secretase beta-amyloid protein converting enzyme (BACE)1 and the microtubule-destabilizing protein SCG10 (STMN2). It may play a role in TNF-induced cell death and neuronal differentiation. BRI3 was found to inhibit the various processing of amyloid precursor protein (APP) by blocking the access of alpha- and beta-secretases to APP, competitive inhibition of APP processing by BRI3 may provide a new approach to Alzheimer disease (AD) therapy and prevention.

Publications notables

Autrice	Pubmed ID	Journal	Application
Noemi Andor	32215369	NAR Genom Bioinform	FC

Stockage

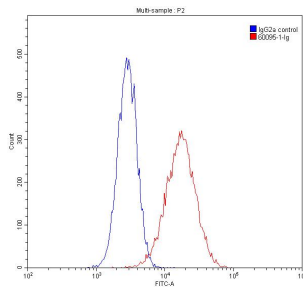
Stockage:
Stocker à -20°C. Stable pendant un an après l'expédition.
Tampon de stockage:
PBS avec azoture de sodium à 0,02 % et glycérol à 50 % pH 7,3
L'aliquotage n'est pas nécessaire pour le stockage à -20C

***** Les 20ul contiennent 0,1% de BSA.**

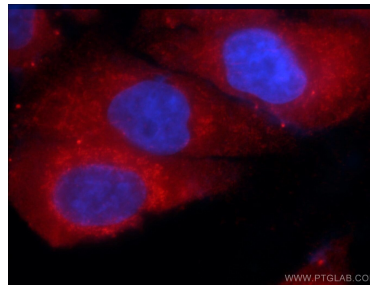
For technical support and original validation data for this product please contact:
T: 1 (888) 4PTGLAB (1-888-478-4522) (toll free in USA), or 1(312) 455-8498 (outside USA)
E: proteintech@ptglab.com
W: ptglab.com

This product is exclusively available under Proteintech Group brand and is not available to purchase from any other manufacturer.

Données de validation sélectionnées



1X10⁶ HepG2 cells were stained with 0.20ug ITM2C antibody (60095-1-Ig, red) and control antibody (blue). Fixed with 90% MeOH.



Immunofluorescent analysis of HepG2 cells using 60095-1-Ig (ITM2C antibody) at dilution of 1:50 and Rhodamine-Goat anti-Mouse IgG.