

À des fins de recherche uniquement

Anticorps Monoclonal anti-APOBEC3G



Numéro de catalogue: 60100-1-Ig

Phare

2 Publications

Informations de base

Numéro de catalogue: 60100-1-Ig	Numéro d'acquisition GenBank: BC024268	Méthode de purification: Purification par protéine A
Taille: 150ul , Concentration: 753 µg/ml by Bradford method using BSA as the standard;	Identification du gène (NCBI): 60489	CloneNo.: 5G10A8
Hôte: Mouse	Nom complet: apolipoprotein B mRNA editing enzyme, catalytic polypeptide-like 3G	Dilutions recommandées: WB 1:200-1:1000 IHC 1:20-1:200 IF 1:10-1:100
Isotype: IgG2b	MW calculé 46 kDa	
Immunogen Catalog Number: AG7770	MW observés: 46 kDa	

Applications

Applications testées:

IF, IHC, WB, ELISA

Demandes citées:

IHC, WB

Spécificité de l'espèce:

Humain, rat, souris

Espèces citées:

Humain

Remarque-IHC: il est suggéré de démasquer l'antigène avec un tampon de TE buffer pH 9,0; (*) A défaut, 'le démasquage de l'antigène peut être 'effectué avec un tampon citrate pH 6,0.

Contrôles positifs:

WB : cellules A375, cellules PC-3

IHC : tissu de cancer du sein humain,

IF : cellules C6,

Informations générales

APOBEC3G (apolipoprotein B mRNA-editing enzyme, catalytic polypeptide-like 3G, also known as CEM15), a member of the APOBEC family of cytidine deaminase-editing enzymes, is a potent DNA mutator that can be packaged into budding retroviruses. HA-tagged APOBEC3G can be expressed in 293T cells, which do not express APOBEC3G endogenously, in addition 22- and 24-kDa proteolytic degradation fragments can be detected by western blot (PMID:14672928). It has 2 isoforms produced by alternative splicing.

Publications notables

Autrice	Pubmed ID	Journal	Application
Ruidong Chen	28098260	Sci Rep	WB
Huanrong Lan	24753761	Int J Clin Exp Med	IHC

Stockage

Stockage:

Stocker à -20°C. Stable pendant un an après l'expédition.

Tampon de stockage:

PBS avec azoture de sodium à 0,02 % et glycérol à 50 % pH 7,3

L'aliquotage n'est pas nécessaire pour le stockage à -20C

*** Les 20ul contiennent 0,1% de BSA.

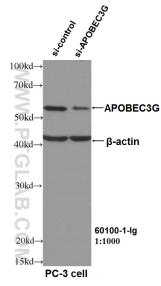
For technical support and original validation data for this product please contact:

T: 1 (888) 4PTGLAB (1-888-478-4522) (toll free in USA), or 1(312) 455-8498 (outside USA)

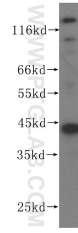
E: proteintech@ptglab.com
W: ptglab.com

This product is exclusively available under Proteintech Group brand and is not available to purchase from any other manufacturer.

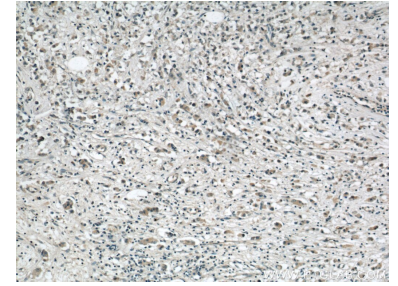
Données de validation sélectionnées



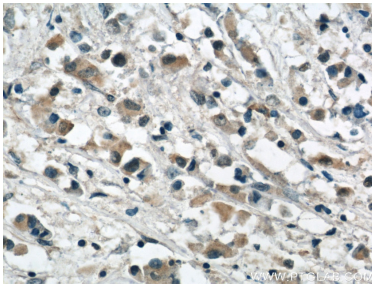
WB result of APOBEC3G antibody (60100-1-Ig, 1:1000) with si-Control and si-APOBEC3G transfected PC-3 cells.



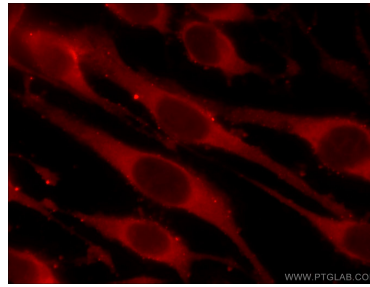
A375 cells were subjected to SDS PAGE followed by western blot with 60100-1-Ig (APOBEC3G antibody) at dilution of 1:200 incubated at room temperature for 1.5 hours.



Immunohistochemical analysis of paraffin-embedded human breast cancer using 60100-1-Ig(APOBEC3G antibody) at dilution of 1:50 (under 10x lens).



Immunohistochemical analysis of paraffin-embedded human breast cancer using 60100-1-Ig(APOBEC3G antibody) at dilution of 1:50 (under 40x lens).



Immunofluorescent analysis of C6 cells using 60100-1-Ig (APOBEC3G antibody) at dilution of 1:25 and Rhodamine-Goat anti-Mouse IgG.