

À des fins de recherche uniquement

Anticorps Monoclonal anti-IFNG

Numéro de catalogue: 60101-1-Ig



Informations de base

Numéro de catalogue: 60101-1-Ig	Numéro d'acquisition GenBank: BC070256	Méthode de purification: Précipitation de l'acide caprylique/du sulfate d'ammonium
Taille: 150ul , Concentration: 1000 µg/ml by Bradford method using BSA as the standard;	Identification du gène (NCBI): 3458	CloneNo.: 1C10C6
Hôte: Mouse	Nom complet: IFN gamma	Dilutions recommandées: WB 1:500-1:1000
Isotype: IgG2a	MW calculé: 166 aa, 19 kDa	
Immunogen Catalog Number: AG8320	MW observés: 25 kDa	

Applications

Applications testées: WB, ELISA	Contrôles positifs: WB : cellules U-937,
Spécificité de l'espèce: Humain	

Informations générales

IFNG is a soluble cytokine that is the only member of the type II class of IFNs. It is secreted by Th1 cells, cytotoxic T cells and NK cells. The cytokine is associated with antiviral, immunoregulatory and anti-tumor properties and is a potent activator of macrophages. It plays crucial roles in pathogen clearance. Aberrant IFNG expression is associated with a number of autoinflammatory and autoimmune diseases. It has been identified in many studies as a biomarker for pleural tuberculosis (TB). Mutations in this gene are associated with aplastic anemia.

Stockage

Stockage:
Stocker à -20°C. Stable pendant un an après l'expédition.
Tampon de stockage:
PBS avec azoture de sodium à 0,1 % et glycérol à 50 % pH 7,3
L'aliquotage n'est pas nécessaire pour le stockage à -20C

***** Les 20ul contiennent 0,1% de BSA.**

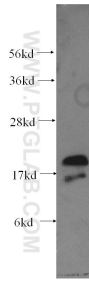
For technical support and original validation data for this product please contact:

T: 1 (888) 4PTGLAB (1-888-478-4522) (toll free in USA), or 1(312) 455-8498 (outside USA)

E: proteintech@ptglab.com
W: ptglab.com

This product is exclusively available under Proteintech Group brand and is not available to purchase from any other manufacturer.

Données de validation sélectionnées



U-937 cells were subjected to SDS PAGE followed by western blot with 60101-1-Ig (IFNG antibody) at dilution of 1:500 incubated at room temperature for 1.5 hours.