

À des fins de recherche uniquement

# Anticorps Monoclonal anti-NR2F6

Numéro de catalogue: 60117-2-Ig

Phare

2 Publications



## Informations de base

Numéro de catalogue: 60117-2-Ig	Numéro d'acquisition GenBank: BC002669	Méthode de purification: Purification par protéine A
Taille: 150ul, Concentration: 1000 µg/ml by Nanodrop;	Identification du gène (NCBI): 2063	CloneNo.: 2H2B8
Hôte: Mouse	Nom complet: nuclear receptor subfamily 2, group F, member 6	Dilutions recommandées: IHC 1:50-1:500
Isotype: IgG1	MW calculé: 43 kDa	
Immunogen Catalog Number: AG7614	MW observés: 43 kDa	

## Applications

### Applications testées:

IHC, WB, ELISA

### Demandes citées:

WB

### Spécificité de l'espèce:

Humain

### Espèces citées:

Humain, souris

### Contrôles positifs:

WB : cellules HCT 116, cellules HEK-293, cellules HeLa, cellules HSC-T6, cellules HT-29, cellules K-562, cellules LNCaP, cellules MCF-7

IHC : tissu de tumeur ovarienne humain, tissu rénal humain

**Remarque-IHC: il est suggéré de démasquer l'antigène avec un tampon de TE buffer pH 9,0; (\*) À défaut, le démasquage de l'antigène peut être effectué avec un tampon citrate pH 6,0.**

## Informations générales

NR2F6 belongs to NR2F subfamily members, which have their roles in the regulation of neurogenesis, organogenesis, and cellular differentiation during embryonic development [PMID:15875024]. NR2F6 acts as transcription factor by binding to a TGACCT direct-repeat motif and has been established in controlling facets of central nervous system (CNS) [12690040]. It is a nuclear attenuator that directly interferes with DNA binding of NF-AT and, subsequently, transcriptional activity of the NF-AT-dependent IL-17 expression. Otherwise, NR2F6 negatively interfered with transcriptional cytokine responses and acted as a barrier against autoimmunity [PMID:18701084].

## Publications notables

Autrice	Pubmed ID	Journal	Application
Victoria Klepsch	29670099	Nat Commun	WB
Hyungsoo Kim	37406115	Sci Adv	WB

## Stockage

### Stockage:

Stocker à -20°C. Stable pendant un an après l'expédition.

### Tampon de stockage:

PBS avec azoture de sodium à 0,02 % et glycérol à 50 % pH 7,3

L'aliquotage n'est pas nécessaire pour le stockage à -20C

\*\*\* Les 20ul contiennent 0,1% de BSA.

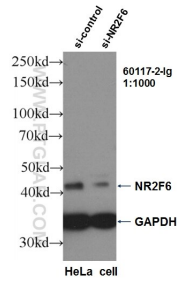
For technical support and original validation data for this product please contact:

T: 1 (888) 4PTGLAB (1-888-478-4522) (toll free in USA), or 1(312) 455-8498 (outside USA)

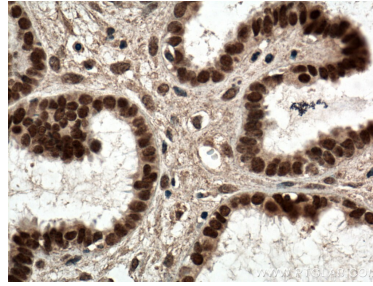
E: proteintech@ptglab.com  
W: ptglab.com

This product is exclusively available under Proteintech Group brand and is not available to purchase from any other manufacturer.

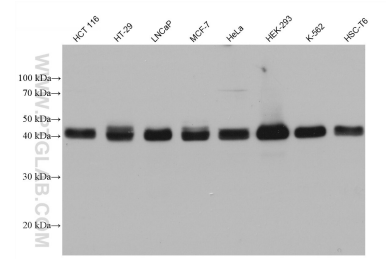
## Données de validation sélectionnées



WB result of NR2F6 antibody (60117-2-Ig, 1:1000) with si-Control and si-NR2F6 transfected HeLa cells.



Immunohistochemical analysis of paraffin-embedded human ovary tumor tissue slide using 60117-2-Ig (NR2F6 antibody) at dilution of 1:200 (under 40x lens. Heat mediated antigen retrieval with Tris-EDTA buffer (pH 9.0).



Various lysates were subjected to SDS PAGE followed by western blot with 60117-2-Ig (NR2F6 antibody) at dilution of 1:10000 incubated at room temperature for 1.5 hours.