

À des fins de recherche uniquement

Anticorps Monoclonal anti-RENALASE



Numéro de catalogue: 60128-1-Ig **2 Publications**

Informations de base

Numéro de catalogue: 60128-1-Ig	Numéro d'acquisition GenBank: BC005364	Méthode de purification: Purification par protéine A
Taille: 150ul , Concentration: 1000 µg/ml by Nanodrop and 600 µg/ml by Bradford method using BSA as the standard;	Identification du gène (NCBI): 55328	CloneNo.: 3A12F5
Hôte: Mouse	Nom complet: chromosome 10 open reading frame	Dilutions recommandées: WB 1:1000-1:4000 IHC 1:20-1:200
Isotype: IgG1	MW calculé: 38 kDa	
Immunogen Catalog Number: AG13061	MW observés: 38 kDa	

Applications

Applications testées:

IHC, WB, ELISA

Demandes citées:

WB

Spécificité de l'espèce:

Humain

Espèces citées:

Humain

Remarque-IHC: il est suggéré de démasquer l'antigène avec un tampon de TE buffer pH 9,0; (*) A défaut, 'le démasquage de l'antigène peut être effectué avec un tampon citrate pH 6,0.

Contrôles positifs:

WB : tissu cardiaque humain,

IHC : tissu rénal humain, tissu de muscle squelettique humain

Informations générales

RNLS, also named as Renalase, C10orf59 and MAO-C, belongs to the renalase family. It is probable FAD-dependent amine oxidase secreted by the kidney, which circulates in blood and modulates cardiac function and systemic blood pressure. RNLS degrades catecholamines such as dopamine, norepinephrine and epinephrine in vitro. It lowers blood pressure in vivo by decreasing cardiac contractility and heart rate and preventing a compensatory increase in peripheral vascular tone, suggesting a causal link to the increased plasma catecholamine and heightened cardiovascular risk. High concentrations of catecholamines activate plasma renalase and promotes its secretion and synthesis. RNLS has physiologically relevant catecholamine-oxidizing activity. (PMID:15841207) This antibody is specific to RNLS.

Publications notables

Autrice	Pubmed ID	Journal	Application
Desir Gary V GV	23107895	J Am Soc Hypertens	WB
Desir Gary V GV	24137013	Nephrol Dial Transplant	WB

Stockage

Stockage:

Stocker à -20°C. Stable pendant un an après l'expédition.

Tampon de stockage:

PBS avec azoture de sodium à 0,02 % et glycérol à 50 % pH 7,3

L'aliquotage n'est pas nécessaire pour le stockage à -20C

*** Les 20ul contiennent 0,1% de BSA.

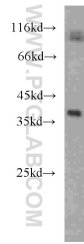
For technical support and original validation data for this product please contact:

T: 1 (888) 4PTGLAB (1-888-478-4522) (toll free in USA), or 1(312) 455-8498 (outside USA)

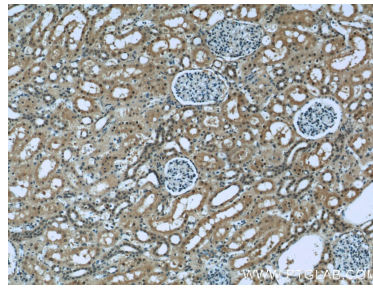
E: proteintech@ptglab.com
W: ptglab.com

This product is exclusively available under Proteintech Group brand and is not available to purchase from any other manufacturer.

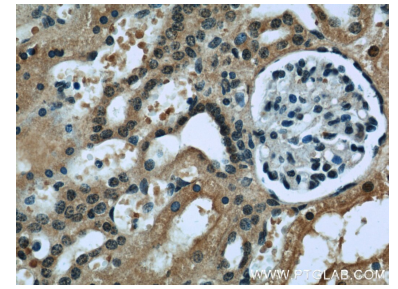
Données de validation sélectionnées



human heart tissue were subjected to SDS PAGE followed by western blot with 60128-1-Ig (RENALASE antibody) at dilution of 1:2000 incubated at room temperature for 1.5 hours.



Immunohistochemical analysis of paraffin-embedded human kidney slide using 60128-1-Ig (RENALASE Antibody) at dilution of 1:50.



Immunohistochemical analysis of paraffin-embedded human kidney slide using 60128-1-Ig (RENALASE Antibody) at dilution of 1:50.