

À des fins de recherche uniquement

# Anticorps Monoclonal anti-Gastrokine



# 1

Numéro de catalogue: 60130-1-Ig

## Informations de base

Numéro de catalogue: 60130-1-Ig	Numéro d'acquisition GenBank: BC059778	Méthode de purification: Purification par protéine A
Taille: 150ul , Concentration: 1500 µg/ml by Nanodrop and 1500 µg/ml by Bradford method using BSA as the standard;	Identification du gène (NCBI): 56287	CloneNo.: 3C10E3
Hôte: Mouse	Nom complet: gastrokine 1	Dilutions recommandées: WB 1:5000-1:50000 IHC 1:50-1:500 IF 1:200-1:800
Isotype: IgG2a	MW calculé: 22 kDa	
Immunogen Catalog Number: AG6091	MW observés: 22 kDa	

## Applications

### Applications testées:

IF, IHC, WB, ELISA

### Spécificité de l'espèce:

Humain, porc, rat, souris

**Remarque-IHC: il est suggéré de démasquer l'antigène avec un tampon de TE buffer pH 9.0; (\*) À défaut, 'le démasquage de l'antigène peut être 'effectué avec un tampon citrate pH 6,0.**

### Contrôles positifs:

WB : tissu d'estomac humain, tissu d'estomac de rat

IHC : tissu d'estomac humain,

IF : tissu d'estomac humain, tissu d'estomac de souris

## Informations générales

Gastrokine 1 (GKN1), a stomach-specific protein also known as 18 kDa antrum mucosa protein (AMP-18) or foveolin, belongs to the gastrokine family of gastric mucus cell-secreted proteins. The human GKN1 gene has been localized in a region of chromosome 2p13 of about 6 kb and contains 6 exons. GKN1 is expressed only in normal human stomach, but is absent from gastric adenocarcinomas, gastro-esophageal adenocarcinoma cell lines, and other normal and tumor gastro-intestinal tissues. GKN1 may play an important role in normal gastric function and may be a gastric tumour suppressor.

## Stockage

### Stockage:

Stocker à -20°C. Stable pendant un an après l'expédition.

### Tampon de stockage:

PBS avec azoture de sodium à 0,02 % et glycérol à 50 % pH 7,3

L'aliquotage n'est pas nécessaire pour le stockage à -20C

\*\*\* Les 20ul contiennent 0,1% de BSA.

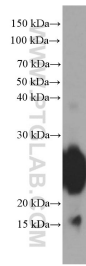
For technical support and original validation data for this product please contact:

T: 1 (888) 4PTGLAB (1-888-478-4522) (toll free  
in USA), or 1(312) 455-8498 (outside USA)

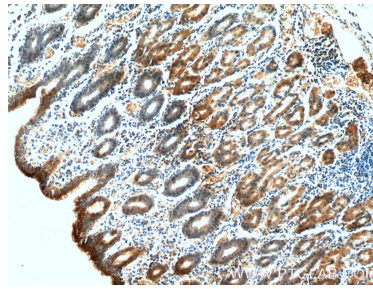
E: proteintech@ptglab.com  
W: ptglab.com

This product is exclusively available under Proteintech Group brand and is not available to purchase from any other manufacturer.

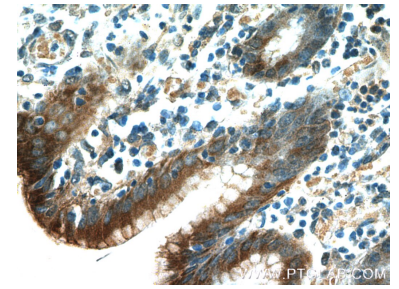
## Données de validation sélectionnées



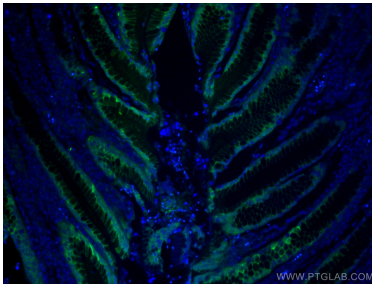
human stomach tissue were subjected to SDS PAGE followed by western blot with 60130-1-Ig (GKN1 Antibody) at dilution of 1:20000 incubated at room temperature for 1.5 hours.



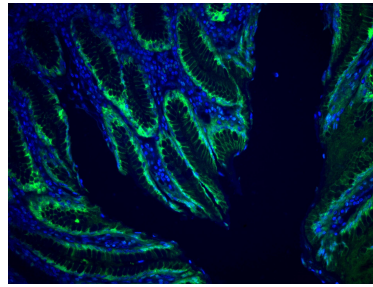
Immunohistochemical analysis of paraffin-embedded human stomach tissue slide using 60130-1-Ig (GKN1 Antibody) at dilution of 1:200 (under 10x lens).



Immunohistochemical analysis of paraffin-embedded human stomach tissue slide using 60130-1-Ig (GKN1 Antibody) at dilution of 1:200 (under 40x lens).



Immunofluorescent analysis of (4% PFA) fixed human stomach tissue using Gastrokine 1 antibody (60130-1-Ig, Clone: 3C10E3) at dilution of 1:400 and CoraLite®488-Conjugated AffiniPure Goat Anti-Mouse IgG(H+L).



Immunofluorescent analysis of (4% PFA) fixed human stomach tissue using Gastrokine 1 antibody (60130-1-Ig, Clone: 3C10E3) at dilution of 1:400 and CoraLite®488-Conjugated AffiniPure Goat Anti-Mouse IgG(H+L).