

À des fins de recherche uniquement

Anticorps Monoclonal anti-IL-1 Beta

Numéro de catalogue: 60136-1-Ig **11 Publications**



Informations de base

Numéro de catalogue:
60136-1-Ig

Taille:
150ul , Concentration: 500 µg/ml by
Bradford method using BSA as the
standard;

Hôte:
Mouse

Isotype:
IgG1

Immunogen Catalog Number:
AG10295

Numéro d'acquisition GenBank:
BC008678

Identification du gène (NCBI):
3553

Nom complet:
interleukin 1, beta

MW calculé
269 aa, 31 kDa

Méthode de purification:
Purification par protéine G

CloneNo.:
1C6F12

Dilutions recommandées:
WB 1:500-1:1000
IP 0.5-4.0 ug for IP and 1:500-1:1000
for WB
IHC 1:50-1:500

Applications

Applications testées:
IHC, IP, WB, ELISA

Demandes citées:
ELISA, WB

Spécificité de l'espèce:
Humain

Espèces citées:
Humain, rat, souris

**Remarque-IHC: il est suggéré de démasquer
l'antigène avec un tampon de TE buffer pH
9,0; (*) A défaut, 'le démasquage de
l'antigène peut être 'effectué avec un
tampon citrate pH 6,0.**

Contrôles positifs:

WB : Protéine recombinante,

IP : cellules RAW 264.7,

IHC : tissu de cancer de la peau humain,

Informations générales

Interleukin-1, produced mainly by blood monocytes, mediates the panoply of host reactions collectively known as acute phase response. It is identical to endogenous pyrogen. The multiple biologic activities that define IL1 are properties of a 15 to 18 kDa protein that is derived from a 30- to 35-kD precursor. Interleukin 1β (IL-1B) is a member of the interleukin 1 cytokine family. It is a pro-inflammatory cytokine against infection, playing an important role in the pathogenesis of cancers. It signals through various adaptor proteins and kinases that lead to activation of numerous downstream targets. The expression level of IL-1B is very low.

Publications notables

Autrice	Pubmed ID	Journal	Application
Xiaqiong Wang	25326752	Nat Immunol	WB
Yue Pang	29037260	Cell Commun Signal	WB
Yi Huang	32367047	Nat Cell Biol	WB

Stockage

Stockage:

Stocker à -20°C. Stable pendant un an après l'expédition.

Tampon de stockage:

PBS avec azoture de sodium à 0,02 % et glycérol à 50 % pH 7,3

L'aliquotage n'est pas nécessaire pour le stockage à -20C

***** Les 20ul contiennent 0,1% de BSA.**

For technical support and original validation data for this product please contact:

T: 1 (888) 4PTGLAB (1-888-478-4522) (toll free
in USA), or 1(312) 455-8498 (outside USA)

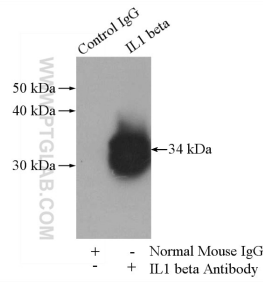
E: proteintech@ptglab.com
W: ptglab.com

**This product is exclusively available under Proteintech
Group brand and is not available to purchase from any
other manufacturer.**

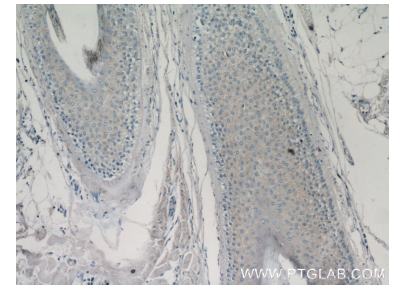
Données de validation sélectionnées



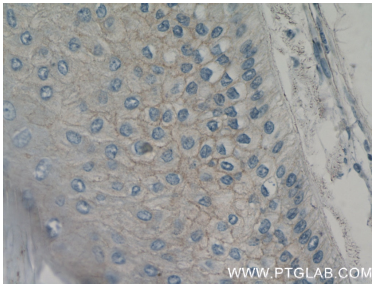
Recombinant protein were subjected to SDS PAGE followed by western blot with 60136-1-Ig (IL1 beta antibody) at dilution of 1:500 incubated at room temperature for 1.5 hours.



IP Result of anti-IL1 beta (IP:60136-1-Ig, 5ug; Detection:60136-1-Ig 1:600) with RAW 264.7 cells lysate 4000ug.



Immunohistochemical analysis of paraffin-embedded human skin cancer tissue slide using 60136-1-Ig (IL1 beta antibody at dilution of 1:50 (under 10x lens).



Immunohistochemical analysis of paraffin-embedded human skin cancer tissue slide using 60136-1-Ig (IL1 beta antibody at dilution of 1:50 (under 40x lens).