

À des fins de recherche uniquement

Anticorps Monoclonal anti-IL-15RA

Numéro de catalogue: 60138-1-Ig



Informations de base

Numéro de catalogue: 60138-1-Ig	Numéro d'acquisition GenBank: BC107777	Méthode de purification: Purification par protéine G
Taille: 150ul , Concentration: 1000 µg/ml by Bradford method using BSA as the standard;	Identification du gène (NCBI): 3601	CloneNo.: 5E3E1
Hôte: Mouse	Nom complet: interleukin 15 receptor, alpha	Dilutions recommandées: WB 1:1000-1:6000
Isotype: IgG1	MW calculé: 231 aa, 24 kDa	
Immunogen Catalog Number: AG10200	MW observés: 55 kDa	

Applications

Applications testées: WB, ELISA	Contrôles positifs: WB : cellules Raji, cellules Daudi, cellules HeLa
Spécificité de l'espèce: Humain	

Informations générales

Interleukin-15 (IL-15) is a pleiotropic cytokine that plays an important role in both innate and adaptive immunity. IL-15 is mainly produced by activated monocytes, macrophages and dendritic cells, and is structurally similar to IL-2 (PMID: 8178155; 12401478). These two cytokines share the same IL-2/15R β and common γ -chain receptor subunits. In addition, IL-2 and IL-15 have their own private α -chain receptor subunit, IL-2R α and IL-15R α , respectively (PMID: 7641685). The IL-15R α chain is expressed by many cell types including monocytes, DCs, NK, T cells and fibroblasts. Several isoforms of IL-15R α exist and are generated either by alternative splicing or by proteolytic cleavage (PMID: 10480910; 15265897). The calculated molecular weight of full-length IL-15R α is 28 kDa, IL-15R α can be glycosylated, and larger apparent molecular weights of 55-65 kDa have been reported by some researches (PMID: 10480910; 15976182; 15671076; 17912462).

Stockage

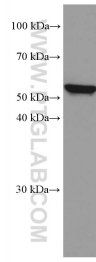
Stockage:
Stocker à -20°C. Stable pendant un an après l'expédition.
Tampon de stockage:
PBS avec azoture de sodium à 0,02 % et glycérol à 50 % pH 7,3
L'aliquotage n'est pas nécessaire pour le stockage à -20C

*** Les 20ul contiennent 0,1% de BSA.

For technical support and original validation data for this product please contact:
T: 1 (888) 4PTGLAB (1-888-478-4522) (toll free in USA), or 1(312) 455-8498 (outside USA)
E: proteintech@ptglab.com
W: ptglab.com

This product is exclusively available under Proteintech Group brand and is not available to purchase from any other manufacturer.

Données de validation sélectionnées



Raji cells were subjected to SDS PAGE followed by western blot with 60138-1-Ig (IL15RA antibody) at dilution of 1:3000 incubated at room temperature for 1.5 hours.