

À des fins de recherche uniquement

# Anticorps Monoclonal anti-CD206

Numéro de catalogue: 60143-1-Ig

Phare

91 Publications



## Informations de base

Numéro de catalogue:

60143-1-Ig

Numéro d'acquisition GenBank:

NM\_002438

Méthode de purification:

Purification par protéine A

Taille:

150ul, Concentration: 2020 µg/ml by 4360

Identification du gène (NCBI):

4360

CloneNo.:

2A6A10

Nanodrop and 1000 µg/ml by Bradford method using BSA as the standard;

Nom complet:

mannose receptor, C type 1

Dilutions recommandées:

WB 1:1000-1:4000

Hôte:

Mouse

MW calculé

166 kDa

IP 0.5-4.0 ug for IP and 1:200-1:1000 for WB

Isotype:

IgG2a

MW observés:

170 kDa

IHC 1:10000-1:40000

IF 1:200-1:800

## Applications

Applications testées:

IF, IHC, IP, WB, ELISA

Contrôles positifs:

WB : tissu placentaire humain, tissu hépatique humain

Demandes citées:

FC, IF, IHC, WB

IP : tissu placentaire humain,

Spécificité de l'espèce:

Humain

IHC : tissu de cancer du poumon humain, tissu hépatique humain

Espèces citées:

Humain, porc

IF : tissu de cancer du poumon humain,

**Remarque-IHC: il est suggéré de démasquer l'antigène avec un tampon de TE buffer pH 9,0; (\*) À défaut, 'le démasquage de l'antigène peut être 'effectué avec un tampon citrate pH 6,0.**

## Informations générales

CD206, also named as MMR, CLEC13D and MRC1, is a type I membrane receptor that mediates the endocytosis of glycoproteins by macrophages. CD206 has been shown to bind high-mannose structures on the surface of potentially pathogenic viruses, bacteria, and fungi so that they can be neutralized by phagocytic engulfment. CD206 is a 170 kDa transmembrane protein which contains 5 domains: an amino-terminal cysteine-rich region, a fibronectin type II repeat, a series of eight tandem lectin-like carbohydrate recognition domains (responsible for the recognition of mannose and fucose), a transmembrane domain, and an intracellular carboxy-terminal tail. It is expressed on most tissue macrophages, in vitro derived dendritic cells, lymphatic and sinusoidal endothelia. This antibody recognizes the intracellular carboxy-terminal part of CD206 and MRC1L1.

## Publications notables

Autrice	Pubmed ID	Journal	Application
Xinmei Huang	34478541	J Clin Endocrinol Metab	IHC
Liping Xu	36179453	Tissue Cell	IHC
C. Zhao	34647005	Mater Today Bio	IF

## Stockage

Stockage:

Stocker à -20°C. Stable pendant un an après l'expédition.

Tampon de stockage:

PBS avec azoture de sodium à 0,02 % et glycérol à 50 % pH 7,3

L'aliquotage n'est pas nécessaire pour le stockage à -20C

\*\*\* Les 20ul contiennent 0,1% de BSA.

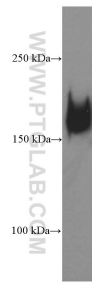
For technical support and original validation data for this product please contact:

T: 1 (888) 4PTGLAB (1-888-478-4522) (toll free in USA), or 1(312) 455-8498 (outside USA)

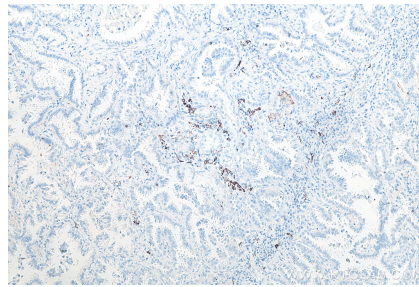
E: proteintech@ptglab.com  
W: ptglab.com

This product is exclusively available under Proteintech Group brand and is not available to purchase from any other manufacturer.

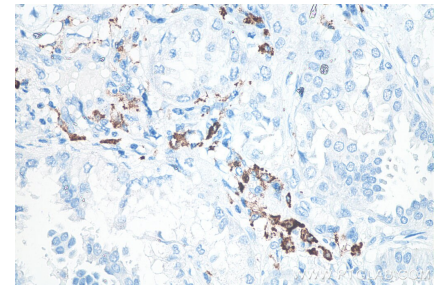
## Données de validation sélectionnées



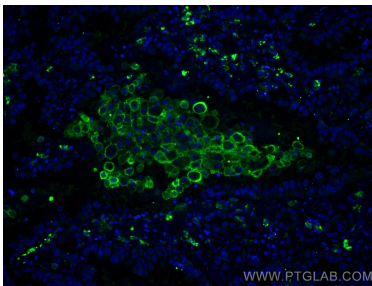
human placenta tissue were subjected to SDS PAGE followed by western blot with 60143-1-Ig (CD206 antibody at dilution of 1:2000 incubated at room temperature for 1.5 hours.



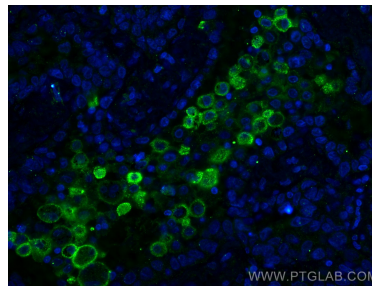
Immunohistochemical analysis of paraffin-embedded human lung cancer tissue slide using 60143-1-Ig (CD206 antibody) at dilution of 1:20000 (under 10x lens). Heat mediated antigen retrieval with Tris-EDTA buffer (pH 9.0).



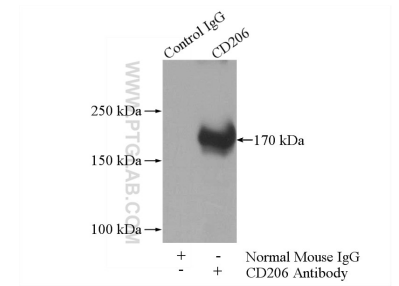
Immunohistochemical analysis of paraffin-embedded human lung cancer tissue slide using 60143-1-Ig (CD206 antibody) at dilution of 1:20000 (under 40x lens). Heat mediated antigen retrieval with Tris-EDTA buffer (pH 9.0).



Immunofluorescent analysis of (4% PFA) fixed human lung cancer tissue using CD206 antibody (60143-1-Ig, Clone: 2A6A10) at dilution of 1:400 and CoraLite®488-Conjugated AffiniPure Goat Anti-Mouse IgG(H+L).



Immunofluorescent analysis of (4% PFA) fixed human lung cancer tissue using CD206 antibody (60143-1-Ig, Clone: 2A6A10) at dilution of 1:400 and CoraLite®488-Conjugated AffiniPure Goat Anti-Mouse IgG(H+L).



IP Result of anti-CD206 (IP:60143-1-Ig, 5ug; Detection:60143-1-Ig 1:300) with human placenta tissue lysate 1520ug.