

À des fins de recherche uniquement

# Anticorps Monoclonal anti-RAB31-specific



Numéro de catalogue: 60146-1-Ig

## Informations de base

Numéro de catalogue:

60146-1-Ig

Numéro d'acquisition GenBank:

NM\_006868

Méthode de purification:

Précipitation de l'acide caprylique/du sulfate d'ammonium

Taille:

150ul, Concentration: 1000 µg/ml by Bradford method using BSA as the standard;

Identification du gène (NCBI):

11031

CloneNo.:

5C1E9

Hôte:

Mouse

Nom complet:

RAB31, member RAS oncogene family

MW calculé

22 kDa

Isotype:

IgG2b

## Applications

Applications testées:

IHC, WB, ELISA

Spécificité de l'espèce:

Humain, souris

## Informations générales

RAB 31, also named as RAB22b, belongs to small GTP-binding proteins of the RAB family. Rab31 localizes in the trans-Golgi network (TGN) and endosomes. It is required for transport of mannose 6-phosphate receptors (MPRs) from the trans-Golgi network (TGN) to endosomes. This antibody can bind RAB31 specifically, and not react RAB22a.

## Stockage

Stockage:

Stocker à -20°C. Stable pendant un an après l'expédition.

Tampon de stockage:

PBS avec azoture de sodium à 0,02 % et glycérol à 50 % pH 7,3

L'aliquotage n'est pas nécessaire pour le stockage à -20C

\*\*\* Les 20ul contiennent 0,1% de BSA.

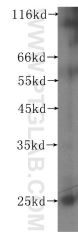
For technical support and original validation data for this product please contact:

T: 1 (888) 4PTGLAB (1-888-478-4522) (toll free in USA), or 1(312) 455-8498 (outside USA)

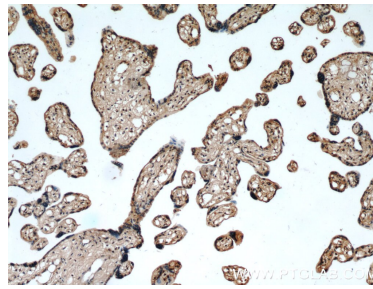
E: [proteintech@ptglab.com](mailto:proteintech@ptglab.com)  
W: [ptglab.com](http://ptglab.com)

This product is exclusively available under Proteintech Group brand and is not available to purchase from any other manufacturer.

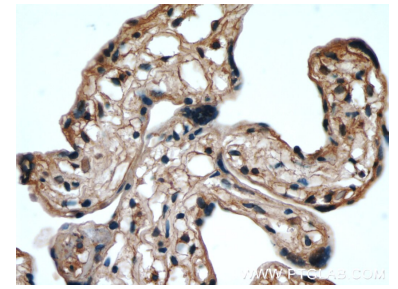
## Données de validation sélectionnées



mouse colon tissue were subjected to SDS PAGE followed by western blot with 60146-1-Ig (RAB31-specific antibody) at dilution of 1:200 incubated at room temperature for 1.5 hours.



Immunohistochemical analysis of paraffin-embedded human placenta using 60146-1-Ig(RAB31-specific antibody) at dilution of 1:50 (under 10x lens).



Immunohistochemical analysis of paraffin-embedded human placenta using 60146-1-Ig(RAB31-specific antibody) at dilution of 1:50 (under 40x lens).