

À des fins de recherche uniquement

# Anticorps Monoclonal anti-GSTO1

Numéro de catalogue: 60150-2-Ig **1 Publications**



## Informations de base

Numéro de catalogue: 60150-2-Ig	Numéro d'acquisition GenBank: BC000127	Méthode de purification: Purification par protéine A
Taille: 150ul , Concentration: 2400 µg/ml by Nanodrop and 1000 µg/ml by Bradford method using BSA as the standard;	Identification du gène (NCBI): 9446	CloneNo.: 5E1E10
Hôte: Mouse	Nom complet: glutathione S-transferase omega 1	Dilutions recommandées: WB 1:5000-1:50000 IHC 1:50-1:500 IF 1:400-1:1600
Isotype: IgG1	MW calculé: 28 kDa	
Immunogen Catalog Number: AG7199	MW observés: 27-30 kDa	

## Applications

### Applications testées:

IF, IHC, WB, ELISA

### Demandes citées:

WB

### Spécificité de l'espèce:

Humain, rat, souris

### Espèces citées:

souris

**Remarque-IHC: il est suggéré de démasquer l'antigène avec un tampon de TE buffer pH 9,0; (\*) A défaut, 'le démasquage de l'antigène peut être 'effectué avec un tampon citrate pH 6,0.**

### Contrôles positifs:

WB : cellules A549, cellules A431, cellules HeLa, cellules Jurkat, cellules K-562, cellules NIH/3T3, cellules Raji, cellules ROS1728, cellules U-937, tissu cardiaque humain

IHC : tissu de cancer de l'oesophage humain, tissu de cancer du foie humain, tissu hépatique humain

IF : cellules PC-3,

## Informations générales

Glutathione-S-transferase omega 1 (GSTO1) belongs to a new subfamily of GSTs and is the rate limiting enzyme for biotransformation of inorganic arsenic, environmental carcinogen. Expression of GSTO1-1 was abundant in a wide range of normal tissues, particularly liver, macrophages, glial cells, and endocrine cells.

## Publications notables

Autrice	Pubmed ID	Journal	Application
Huihui Wang	29108910	Toxicol Appl Pharmacol	WB

## Stockage

### Stockage:

Stocker à -20°C. Stable pendant un an après l'expédition.

### Tampon de stockage:

PBS avec azoture de sodium à 0,02 % et glycérol à 50 % pH 7,3

L'aliquotage n'est pas nécessaire pour le stockage à -20C

**\*\*\* Les 20ul contiennent 0,1% de BSA.**

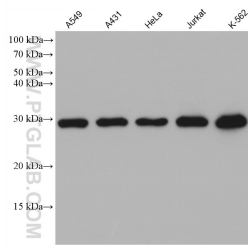
For technical support and original validation data for this product please contact:

T: 1 (888) 4PTGLAB (1-888-478-4522) (toll free in USA), or 1(312) 455-8498 (outside USA)

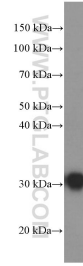
E: [proteintech@ptglab.com](mailto:proteintech@ptglab.com)  
W: [ptglab.com](http://ptglab.com)

**This product is exclusively available under Proteintech Group brand and is not available to purchase from any other manufacturer.**

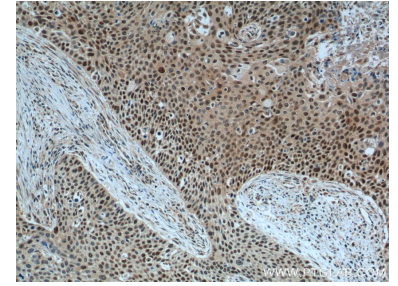
## Données de validation sélectionnées



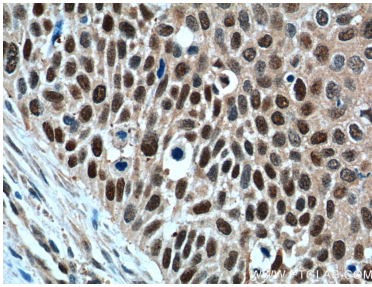
Various lysates were subjected to SDS PAGE followed by western blot with 60150-2-Ig (GSTO1 antibody) at dilution of 1:10000 incubated at room temperature for 1.5 hours.



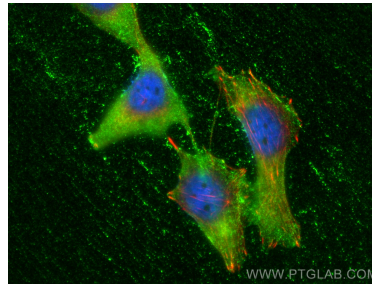
human heart tissue were subjected to SDS PAGE followed by western blot with 60150-2-Ig (GSTO1 Antibody) at dilution of 1:4000 incubated at room temperature for 1.5 hours.



Immunohistochemical analysis of paraffin-embedded human oesophagus cancer tissue slide using 60150-2-Ig (GSTO1 Antibody) at dilution of 1:400 (under 10x lens). Heat mediated antigen retrieval with Tris-EDTA buffer (pH 9.0).



Immunohistochemical analysis of paraffin-embedded human oesophagus cancer tissue slide using 60150-2-Ig (GSTO1 Antibody) at dilution of 1:400 (under 40x lens). Heat mediated antigen retrieval with Tris-EDTA buffer (pH 9.0).



Immunofluorescent analysis of (-20°C Ethanol) fixed PC-3 cells using GSTO1 antibody (60150-2-Ig, Clone: 5E1E10) at dilution of 1:800 and CoraLite® 488-Conjugated AffiniPure Goat Anti-Mouse IgG(H+L), CL594-Phalloidin (red).