

À des fins de recherche uniquement

Anticorps Monoclonal anti-ABCD1

Numéro de catalogue: 60153-1-Ig **Phare**



Informations de base

Numéro de catalogue: 60153-1-Ig	Numéro d'acquisition GenBank: BC025358	Méthode de purification: Purification par protéine A
Taille: 150ul , Concentration: 2300 µg/ml by Nanodrop and 1000 µg/ml by Bradford method using BSA as the standard;	Identification du gène (NCBI): 215	CloneNo.: 1H8E5
Hôte: Mouse	Nom complet: ATP-binding cassette, sub-family D (ALD), member 1	Dilutions recommandées: WB 1:500-1:2000 IF 1:50-1:500
Isotype: IgG1	MW calculé 745 aa, 83 kDa	
Immunogen Catalog Number: AG12757	MW observés: 75 kDa	

Applications

Applications testées: IF, WB, ELISA	Contrôles positifs: WB : cellules HeLa, IF : cellules HeLa,
Spécificité de l'espèce: Humain	

Informations générales

ABCD1 (also known as ALDP) is a member of the ATP-binding cassette (ABC) transporter superfamily which functions as transporter for a wide variety of substrates. It localizes to the peroxisomal membrane. The exact function is not clear so far. Various mutations of ABCD1 cause X-linked adrenoleukodystrophy (X-ALD), an inherited neurodegenerative disease affecting the nervous system white matter and adrenal cortex.

Stockage

Stockage:
Stocker à -20°C. Stable pendant un an après l'expédition.
Tampon de stockage:
PBS avec azoture de sodium à 0,02 % et glycérol à 50 % pH 7,3
L'aliquotage n'est pas nécessaire pour le stockage à -20C

*** Les 20ul contiennent 0,1% de BSA.

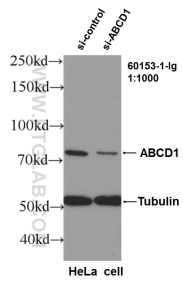
For technical support and original validation data for this product please contact:

T: 1 (888) 4PTGLAB (1-888-478-4522) (toll free
in USA), or 1(312) 455-8498 (outside USA)

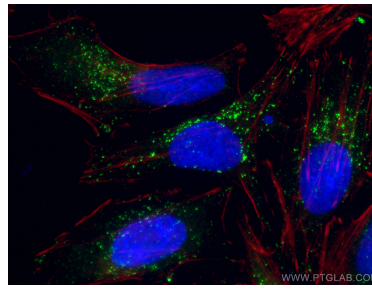
E: proteintech@ptglab.com
W: ptglab.com

This product is exclusively available under Proteintech Group brand and is not available to purchase from any other manufacturer.

Données de validation sélectionnées



WB result of ABCD1 antibody (60153-1-Ig, 1:1000) with si-Control and si-ABCD1 transfected HeLa cells.



Immunofluorescent analysis of (-20°C Ethanol) fixed HeLa cells using ABCD1 antibody (60153-1-Ig, Clone: 1H8E5) at dilution of 1:100 and CoraLite®488-Conjugated AffiniPure Goat Anti-Mouse IgG(H+L). DAPI (blue).