

À des fins de recherche uniquement

Anticorps Monoclonal anti-SMN (Human, Mouse, Rat)



Numéro de catalogue: 60154-2-Ig **Phare**

Informations de base

Numéro de catalogue: 60154-2-Ig	Numéro d'acquisition GenBank: BC000908	Méthode de purification: Purification par protéine A
Taille: 150ul, Concentration: 1800 µg/ml by Nanodrop and 1000 µg/ml by Bradford method using BSA as the standard;	Identification du gène (NCBI): 6607	CloneNo.: 3C10B5
Hôte: Mouse	Nom complet: survival of motor neuron 2, centromeric	Dilutions recommandées: WB 1:5000-1:50000 IHC 1:500-1:2000 IF 1:400-1:1600
Isotype: IgG2b	MW calculé 282 aa, 30 kDa	
Immunogen Catalog Number: AG14333	MW observés: 38 kDa	

Applications

Applications testées:

IF, IHC, WB, ELISA

Spécificité de l'espèce:

Humain, rat, souris

Remarque-IHC: il est suggéré de démasquer l'antigène avec un tampon de TE buffer pH 9.0; (*) À défaut, le démasquage de l'antigène peut être effectué avec un tampon citrate pH 6,0.

Contrôles positifs:

WB : cellules HepG2, cellules A375, cellules HEK-293, cellules HeLa, cellules Jurkat, cellules MOLT-4, cellules Raji, cellules T-47D

IHC : tissu hépatique de souris, tissu cérébral de souris

IF : cellules HepG2,

Informations générales

The survival of motor neurons (SMN) genes are the disease genes of spinal muscular atrophy (SMA), a common motor neuron degenerative disease. The level of SMN protein correlates with phenotypic severity of SMA. SMA patients lack a functional SMN1 gene, but they possess an intact SMN2 gene, which though nearly identical to SMN1, is only partially functional, because a large majority of SMN2 transcripts lack exon 7, resulting in production of a truncated, less stable SMN protein. This antibody 60154-2-Ig can recognize human, mouse and rat SMN gene.

Stockage

Stockage:

Stocker à -20°C. Stable pendant un an après l'expédition.

Tampon de stockage:

PBS avec azoture de sodium à 0,02 % et glycérol à 50 % pH 7,3

L'aliquotage n'est pas nécessaire pour le stockage à -20C

*** Les 20ul contiennent 0,1% de BSA.

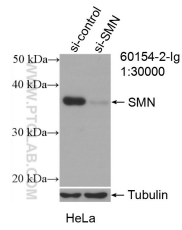
For technical support and original validation data for this product please contact:

T: 1 (888) 4PTGLAB (1-888-478-4522) (toll free in USA), or 1(312) 455-8498 (outside USA)

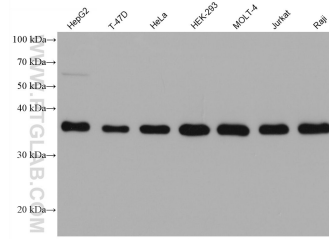
E: proteintech@ptglab.com
W: ptglab.com

This product is exclusively available under Proteintech Group brand and is not available to purchase from any other manufacturer.

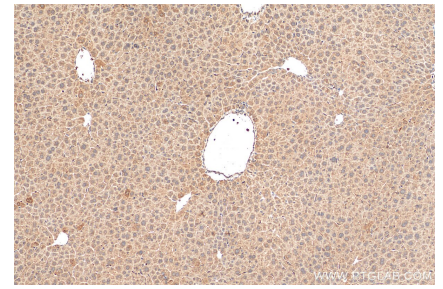
Données de validation sélectionnées



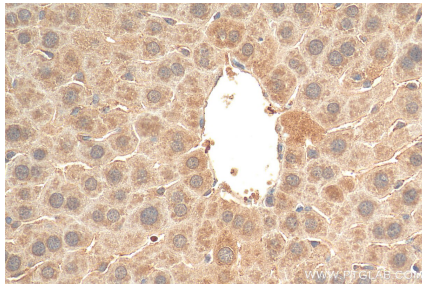
WB result of SMN (Human,Mouse,Rat) antibody (60154-2-Ig; 1:30000; incubated at room temperature for 1.5 hours) with sh-Control and sh-SMN (Human,Mouse,Rat) transfected HeLa cells.



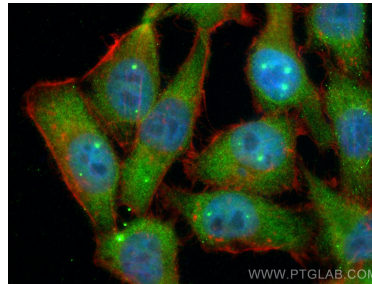
Various lysates were subjected to SDS PAGE followed by western blot with 60154-2-Ig (SMN (Human,Mouse,Rat) antibody) at dilution of 1:10000 incubated at room temperature for 1.5 hours.



Immunohistochemical analysis of paraffin-embedded mouse liver tissue slide using 60154-2-Ig (SMN (Human,Mouse,Rat) antibody) at dilution of 1:1000 (under 10x lens). Heat mediated antigen retrieval with Tris-EDTA buffer (pH 9.0).



Immunohistochemical analysis of paraffin-embedded mouse liver tissue slide using 60154-2-Ig (SMN (Human,Mouse,Rat) antibody) at dilution of 1:1000 (under 40x lens). Heat mediated antigen retrieval with Tris-EDTA buffer (pH 9.0).



Immunofluorescent analysis of (4% PFA) fixed HepG2 cells using SMN (Human,Mouse,Rat) antibody (60154-2-Ig, Clone: 3C10B5) at dilution of 1:800 and CoraLite@488-Conjugated AffiniPure Goat Anti-Mouse IgG(H+L), CL594-Phalloidin (red).